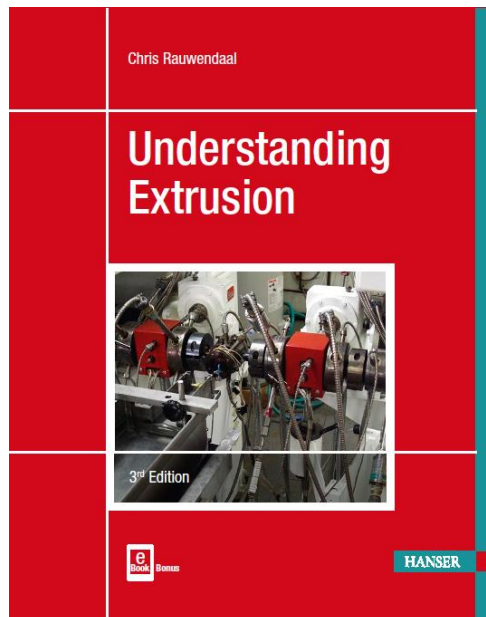


# HANSER



## Leseprobe

zu

## „Understanding Extrusion“

von Chris Rauwendaal

ISBN (Buch): 978-1-56990-698-9

ISBN (E-Book): 978-1-56990-699-6

Weitere Informationen und Bestellungen unter

<https://www.hanser-fachbuch.de/buch/Understanding+Extrusion/9783446416864>

sowie im Buchhandel

© Carl Hanser Verlag, München

## Preface to the Third Edition

The first edition of Understanding Extrusion was published in 2000 and the second edition in 2010. Since the second edition was issued several important developments have taken place. As a result, it makes sense to have a third edition of Understanding Extrusion.

Most of the new material is incorporated in Chapter 2. Topics included in this chapter are interpretation of extrusion process data, dimensional variation by melt temperature fluctuations, efficient extrusion, and more. Chapters 7 and 8 have also been extended and now cover topics such as analysis of shrink void formation and grooved barrel extruder technology.

I would like to thank Dr. Mark Smith for his encouragement to work on this third edition. I also want to thank my wife Sietske for her continued support and for putting up with me despite these time-consuming projects.

*Chris Rauwendaal*

September 2018

# Contents

<b>Preface to the Third Edition</b> .....	<b>V</b>
<b>1 Extrusion Machinery</b> .....	<b>1</b>
1.1 What is an Extruder? .....	1
1.2 Different Types of Extruders .....	2
1.2.1 Single Screw Extruders .....	2
1.2.2 Twin Screw Extruders .....	2
1.2.2.1 Co-Rotating Twin Screw Extruders .....	2
1.2.2.2 Counter-Rotating Twin Screw Extruders .....	3
1.2.3 Ram Extruders .....	4
1.3 Components of an Extruder .....	5
1.3.1 The Extruder Screw .....	5
1.3.2 The Extruder Barrel .....	5
1.3.3 The Feed Throat .....	6
1.3.4 The Feed Hopper .....	7
1.3.5 Barrel Heating and Cooling .....	7
1.3.6 Screw Heating and Cooling .....	9
1.3.7 The Breaker Plate .....	9
1.3.8 The Screen Pack .....	10
1.3.8.1 Screen Changers .....	11
1.3.9 The Extrusion Die .....	12
1.3.9.1 Coextrusion Dies .....	14
1.3.10 The Extruder Drive .....	14
1.3.10.1 Coupling between Motor and Gearbox .....	15
1.3.11 The Speed Reducer .....	16
1.3.11.1 Thrust Bearing Assembly .....	16
1.3.12 The Gear Pump .....	17
<b>2 Instrumentation and Control</b> .....	<b>19</b>
2.1 Instrumentation .....	19
2.2 Most Important Process Parameters .....	19
2.2.1 Melt Pressure .....	20
2.2.2 Pressure Transducers .....	21

2.2.3	Temperature Measurement	22
2.2.4	Melt Temperature Measurement	23
2.2.5	Barrel Temperature Measurement	24
2.3	Temperature Control	26
2.3.1	On-Off Control	26
2.3.2	Proportional Control	26
2.3.3	Fuzzy Logic Control	28
2.4	Collection and Interpretation of Extrusion Process Data	29
2.4.1	Introduction	29
2.4.2	Vital Signs of the Extrusion Process	29
2.4.2.1	Melt Pressure	30
2.4.2.2	Melt Temperature	35
2.4.2.3	Training	44
2.4.3	Examples of Extrusion Problems Solved by Using a Data Acquisition System	44
2.4.3.1	Variation in Stock Temperature	44
2.4.3.2	Variation in Feed Housing Temperature	46
2.4.3.3	Variation in Melt Pressure	48
2.4.4	Process Optimization	50
2.4.5	Temperature-Induced Dimensional Changes of Extrudate	50
<b>3</b>	<b>Complete Extrusion Lines</b>	<b>53</b>
3.1	Tubing and Pipe Extrusion Lines	53
3.2	Film and Sheet Lines Using the Roll Stack Process	54
3.3	Film Lines Using Chill Roll Casting	55
3.4	Combination of Materials	56
3.4.1	Coextrusion	56
3.4.2	Extrusion Coating	57
3.4.3	Extrusion Lamination	58
3.5	Blown Film Lines	59
3.6	Extrusion Compounding Lines	59
3.7	Profile Extrusion Lines	61
<b>4</b>	<b>Plastics and Their Properties Important in Extrusion</b>	<b>63</b>
4.1	Thermoplastics and Thermosets	63
4.2	Amorphous and Semi-Crystalline Plastics	64
4.3	Liquid Crystalline Plastics (LCPs)	66
4.4	Elastomers	66
4.5	Flow Behavior of Plastic Melts	67
4.6	Melt Index	68
4.7	The Effect of Shearing	69
4.8	Shear Thinning or Pseudoplastic Behavior	69

4.9	Effect of Temperature on Viscosity .....	70
4.10	Viscous Heat Generation .....	71
4.11	Thermal Properties .....	71
4.11.1	Thermal Conductivity .....	72
4.11.2	Specific Heat and Enthalpy .....	72
4.11.3	Thermal Stability and Induction Time .....	73
4.11.4	Density .....	74
4.11.5	Melting Point .....	76
4.11.6	Glass Transition Temperature .....	76
<b>5</b>	<b>How an Extruder Works .....</b>	<b>77</b>
5.1	Solids Conveying .....	78
5.1.1	Gravity Induced Conveying .....	78
5.1.2	Drag Induced Conveying .....	81
5.1.3	Starve Feeding .....	82
5.1.4	Grooved Feed Extruders .....	83
5.2	Melting .....	85
5.2.1	Contiguous Solids Melting .....	85
5.2.2	Dispersed Solids Melting .....	86
5.3	Melt Conveying .....	89
5.3.1	Melt Temperatures .....	90
5.4	Mixing .....	93
5.4.1	Distributive Mixing .....	93
5.4.2	Mixing Sections .....	98
5.4.2.1	Distributive Mixing Sections .....	98
5.4.2.2	Dispersive Mixing Sections .....	102
5.5	Degassing .....	108
5.6	Die Forming .....	110
5.6.1	Size and Shape Changes .....	111
5.6.2	Tubing and Pipe Dies .....	114
5.6.3	Flat Film and Sheet Dies .....	117
5.6.4	Profile Dies .....	119
<b>6</b>	<b>How to Run an Extruder .....</b>	<b>123</b>
6.1	Introduction .....	123
6.2	Before Start-up .....	123
6.3	Getting Ready for a Run .....	124
6.4	Starting the Extruder .....	126
6.5	Actual Operation .....	128
6.6	Shutdown .....	129
6.6.1	Purging .....	129
6.7	Safety Issues .....	131
6.7.1	Heat .....	131

6.7.2	Moving Parts	131
6.7.3	Electrical	132
6.7.4	Weights	132
6.7.5	Pressure	132
6.8	Inspection and Training	133
<b>7</b>	<b>How to Troubleshoot Extrusion Problems</b>	<b>137</b>
7.1	Objectives	137
7.2	Prerequisites	137
7.2.1	Good Instrumentation	137
7.2.2	Good Understanding of the Process	138
7.2.3	Collect and Analyze Historical Data	138
7.2.4	Teamwork	138
7.3	Main Types of Problems	139
7.3.1	Output Problems	139
7.3.1.1	Low Extruder Output	139
7.3.1.2	Variation in Extruder Output	141
7.3.2	Appearance Problems	144
7.3.2.1	Lines	145
7.3.2.2	Die Drool	145
7.3.2.3	Discoloration and Degradation	145
7.3.2.4	Voids	147
7.3.2.5	Vent Flow	156
7.3.2.6	Air Entrapment	156
7.3.2.7	Gels	157
7.3.2.8	Poor Mixing	158
7.3.3	Functional Product Problems	160
7.3.4	High Melt Temperature	160
7.3.5	High Motor Load	161
7.3.6	Wear Problems	161
7.4	Systematic Problem Solving	163
7.5	Machine Troubleshooting and Maintenance	164
7.5.1	Check the Oil	165
7.5.2	Unusual Noises	165
7.5.3	Drive Motors and Belts	167
7.5.4	Spare Parts	167
7.5.5	Screw and Barrel	167
7.5.6	Extruder Maintenance Checklist	168
7.6	Troubleshooting Lists	171
<b>8</b>	<b>New Developments in Extrusion and Methods to Increase Efficiency</b>	<b>175</b>
8.1	General Trends	175
8.2	High-Speed Extrusion	175

8.2.1	Melt Temperature	175
8.2.2	Extruders without Gear Reducer	176
8.2.3	Energy Consumption	177
8.2.4	Change-over Resin Consumption	177
8.2.5	Change-over Time and Residence Time	177
8.3	Multi-Strand Extrusion	178
8.4	Reducing Material Cost	180
8.4.1	Low Cost Filler	180
8.4.2	Recycled Plastics	182
8.4.3	Foamed Plastics	182
8.4.4	Pre-compounded Material vs. In-house Compounding	183
8.4.5	Start-up, Change-over, and Shutdown	183
8.4.6	Polymer Processing Aids (PPA)	183
8.5	Increased Automation	186
8.6	Efficient Extrusion	186
8.6.1	Instrumentation	187
8.6.2	Data Acquisition	187
8.6.3	Feed Stock Variability	188
8.6.4	Flood Feeding versus Starve Feeding	188
8.6.5	Purging	189
8.6.5.1	Melt Displacement Behavior	190
8.6.5.2	Effect of Viscosity Differences	193
8.6.5.3	Effect of Color	194
8.6.5.4	Dynamic versus Static Purging Methods	195
8.6.5.5	Purging Agents	198
8.6.5.6	Practical Rules to Reduce Purge Times	198
8.6.6	Methods to Reduce Energy Consumption	200
8.6.6.1	Energy Requirement	200
8.6.6.2	Energy Cost per Kilogram	200
8.6.6.3	Energy Cost per Year	200
8.6.6.4	Barrel Cooling	200
8.6.6.5	Heat Loss at the Extrusion Die	201
8.6.6.6	Melt Temperature	201
8.6.6.7	Pre-Drying	202
8.6.6.8	Use of Filled Plastics	202
8.6.6.9	Tips to Reduce Energy Use in Extrusion	202
8.6.7	Flexible Manufacturing	203
8.7	Statistical Process Control (SPC) and Design of Experiments (DOE)	206
8.8	Causes of Process Variation	208
8.8.1	Melt Temperature Variation	208
8.8.2	Melting Related Instabilities	209
8.9	Grooved Feed and Grooved Barrel Extruders	209
8.9.1	Adjustable Grooved Feed Extruder	210
8.9.2	Grooved Barrel Extruders	210
8.10	The Rotary Channel Pump (RCP)	213

8.11	New Developments in Mixing and Screw Design .....	213
8.11.1	Elongational Mixing Devices .....	213
8.11.2	Barrier Screws with Elongational Mixing Action .....	214
8.11.3	Floating Sleeve Intermeshing Pin Mixer .....	215
8.11.4	High Heat Transfer (HHT) Screw Design Technology .....	216
8.11.5	The Single Screw Compounding Extruder (SSCE) .....	217
8.12	Fiber Reinforced Plastics .....	218
8.12.1	Conventional Methods to Make Fiber Reinforced Plastics .....	218
8.12.2	Nexus Technology .....	219
8.13	Conclusions .....	219
<b>9</b>	<b>Appendices .....</b>	<b>223</b>
9.1	Appendix 1: Recommended list for further reading .....	223
9.2	Appendix 2: Extrusion Theory .....	225
9.2.1	References .....	230
9.2.2	Nomenclature .....	230
	<b>Index .....</b>	<b>233</b>



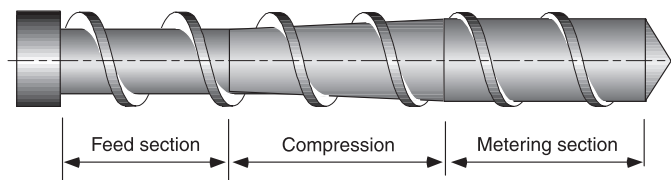
## ■ 1.3 Components of an Extruder

In this section we will discuss:

- the extruder screw
- the extruder barrel
- the feed throat
- the feed hopper
- barrel heating and cooling
- the breaker plate
- the screen pack
- the extrusion die
- the extruder drive
- the reducer
- gear pumps
- instrumentation and control

### 1.3.1 The Extruder Screw

The heart of the extruder is the extruder screw. This is a long cylinder with a helical flight wrapped around it, see Figure 1.6. The screw is very important because conveying, heating, melting, and mixing of the plastic are mostly determined by the screw. The stability of the process and the quality of the extruded product are very much dependent on the design of the screw. The screw rotates in a cylinder that fits closely around it.



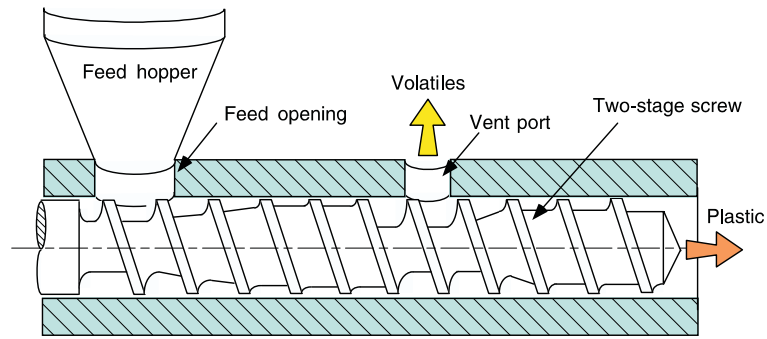
**Figure 1.6** A single flighted extruder screw

### 1.3.2 The Extruder Barrel

The cylinder is called the extruder barrel. The barrel is a straight cylinder usually equipped with a bimetallic liner; this liner is a hard, integral layer with high wear resistance. In most cases, the wear resistance of the barrel should be better than that of the screw. The reason is that the screw is much easier to rebuild and replace than the barrel. Bimetallic barrels usually cannot be rebuilt.

The barrel may have a vent opening through which volatiles can be removed from the plastic, see Figure 1.7, a process called devolatilization. An example is the removal of moisture from a hygroscopic plastic. An extruder with a vent port should use a special screw geometry to keep the plastic melt from coming out of the vent port; such a screw is called a “two-stage screw,” see Figure 1.7.

Functions

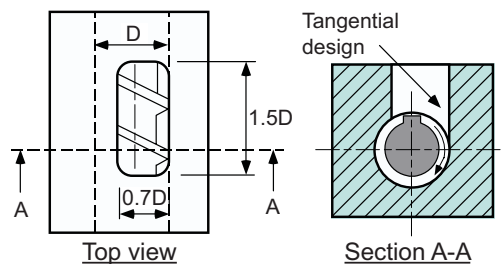


**Figure 1.7** A vented extruder barrel with a two-stage screw

### 1.3.3 The Feed Throat

**Material intake** The feed throat is connected to the barrel; it contains the feed opening through which the plastic material is introduced to the extruder. The feed throat usually has water-cooling capability because we have to be able to keep the feed throat temperature low enough to keep the plastic particles from sticking to the wall. To improve the intake capability of the feed throat, the feed opening can be offset as shown in Figure 1.8 and have an elongated shape. The length of the feed opening should be about 1.5 times the diameter of the barrel and the width about 0.7 times the diameter.

Some extruders do not have a separate feed throat, but the feed opening is machined right into the extruder barrel. There are both advantages and disadvantages to such a setup. The advantages are lower cost, fewer parts, and no problems with alignment of the barrel to the feed throat. Disadvantages are that it is more difficult to create a thermal barrier between the hot barrel and the cold feed throat region and good cooling of the feed throat region is more difficult.

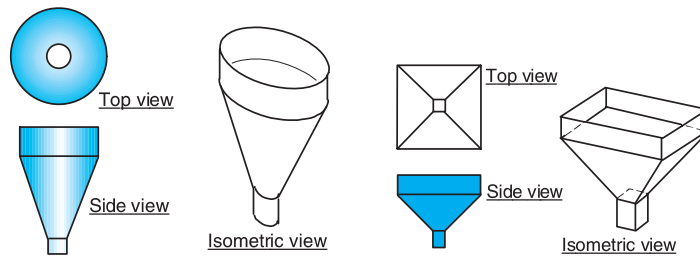


**Figure 1.8** Preferred geometry for feed opening in the feed throat

### 1.3.4 The Feed Hopper

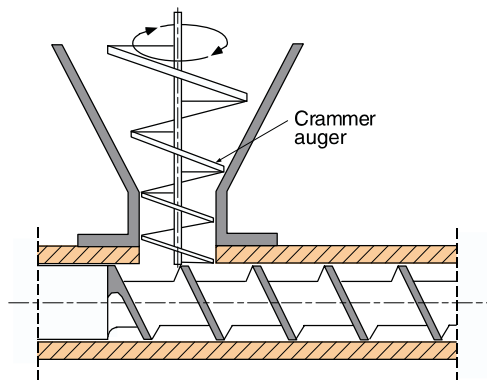
The feed throat is connected to the feed hopper and the extruder barrel. The feed hopper holds the plastic pellets or powder and discharges the material into the feed throat. The hopper should be designed to allow a steady flow of material. Steady flow is best achieved with a circular hopper with a gradual transition in the conical section of the hopper, see Figure 1.9.

Conveying material



**Figure 1.9** Good hopper design (left) and bad hopper design (right)

For difficult bulk materials, special devices can be used to promote steady flow through the hopper; such as vibrating pads, stirrers, wipers, and even crammer screws to force the material to the discharge, see Figure 1.10.



**Figure 1.10**  
Example of crammer feeder

### 1.3.5 Barrel Heating and Cooling

The extruder barrel has both heating and cooling capability. Heating is usually done with electrical band heaters located along the length of the extruder. The heaters can be mica insulated heaters, ceramic heaters, or cast-in heaters. In cast-in heaters, the heating elements are cast in a semi-circular block of aluminum or bronze; these heaters provide good heat transfer. Aluminum cast heaters can heat up to 400 °C, while bronze cast heaters have a maximum operating temperature of about 550 °C. Other types of heating can be used, such as induction heating,

Various heating methods

The threaded probe with the sapphire window can be used in combination with a simple IR thermometer. This allows IR melt temperature measurement in the extruder barrel or in the die.

IR temperature measurement provides two important benefits:

- 1) fast response,
- 2) no disturbance of flow

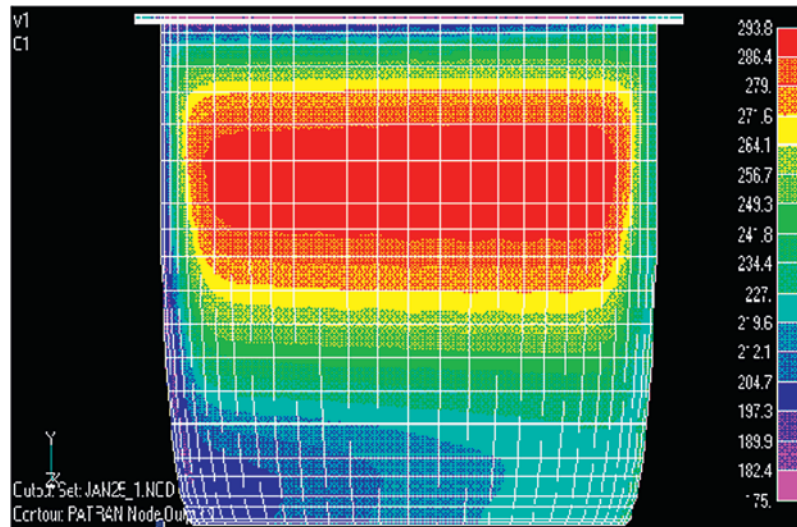
IR temperature measurement provides two important benefits. One, the response time is fast, about 10 milliseconds. Two, the measurement does not disturb the flow as is the case with an immersion probe. Because of the fast response, the IR measurement can detect rapid changes in melt temperature that cannot be detected by an immersion melt temperature probe. Melt temperature variation will be discussed next.

### Melt Temperature Variation in Extrusion

The melt temperatures in extrusion result from viscous dissipation and heat transfer. In drag flow, the shear rates and viscous dissipation are relatively uniform. However, the heat transfer to the screw and barrel results in large temperature differences within the polymer melt. The largest temperature gradients tend to occur at the barrel surface.

Melt temperature distribution can be determined by performing a non-isothermal analysis of the flow in the screw channel

The melt temperature distribution can be determined by performing a non-isothermal analysis of the flow in the screw channel. In the case of a non-Newtonian polymer melt this is typically done using finite element analysis (FEA). Figure 2.24 shows a color contour plot of melt temperatures in the screw channel of a 63 mm single screw extruder running a 0.2 melt index high density polyethylene (HDPE) at 100 rpm. The vertical axis has been stretched about eight times to make it easier to examine the temperature distribution.



**Figure 2.24** Melt temperature distribution in 63 mm extruder running at 100 rpm

Melt temperatures in the screw channel are highly non-uniform

The top surface is the barrel, the bottom surface is the root of the screw, the left vertical boundary is the pushing flank of the flight, and the right vertical boundary

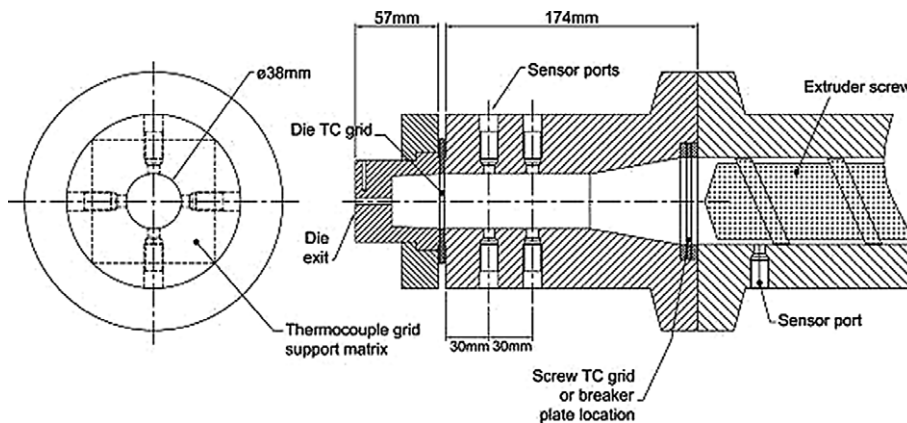
is the trailing flank of the flight. It is clear that the melt temperatures are highly non-uniform. The temperatures close to the barrel are relatively low because of the heat transfer to the barrel – the barrel cools down the melt that is in close proximity to the barrel. The temperatures at the pushing flight flank are low because the cool melt close to the barrel moves down along the flight when it reaches the pushing flight flank.

At the root of the screw, the cool melt from the pushing flight flank moves toward the trailing side of the flight. If there is no heat transfer with the screw, the melt temperatures will gradually increase as the melt moves from the pushing flank to the trailing flank. The melt reaching the trailing flight flank moves up along the flight until it gets close to the barrel. At that point the cycle starts again. The outer region of the screw channel stays relatively cool because of the heat transfer from the melt to the barrel. The situation is quite different for the inner region of the screw channel.

The melt in the inner region remains in this region as it travels down the length of the screw channel – it will not come into close proximity of the barrel. The inner region is thermally insulated from the barrel by a relatively thick layer of polymer melt. As a result, the temperatures in this region increase higher than in any other part of the channel – it is a natural hot spot. In Figure 2.24 the temperatures in the hot spot are more than 100 °C above the barrel temperature.

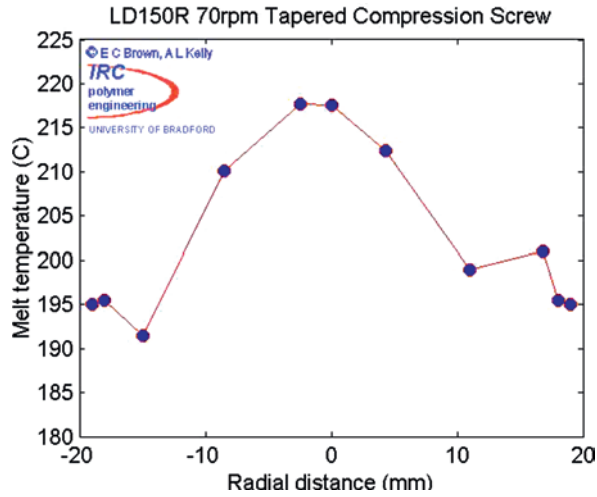
Hot spots tend to form in the center region of the screw channel

When the screw discharges the melt, this melt will be non-uniform in temperature. A number of studies have analyzed the variation of melt temperatures in extruders. One such study was made by E. Brown and A. Kelly at Bradford University in England. In this work, a fast response thermocouple (TC) mesh was used to measure melt temperature variation using three different extruder screws. The TC mesh was located in the breaker plate recess of the extruder barrel, see Figure 2.25.



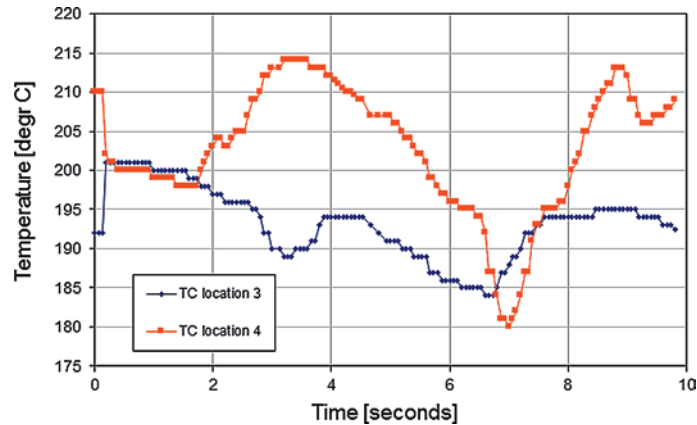
**Figure 2.25** Experimental setup for melt temperature study

Melt temperature was measured at multiple locations, see Figure 2.26. It is clear from this figure that the melt temperatures across the channel are quite non-uniform with a low temperature of 190 °C and a high temperature over 215 °C.



**Figure 2.26** Melt temperatures versus radial distance from the center

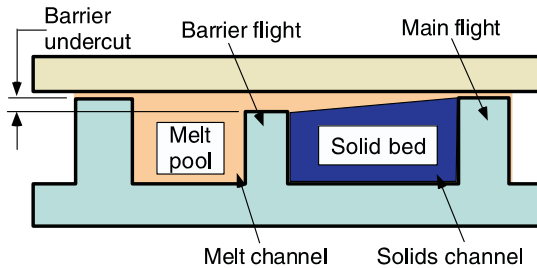
The melt temperatures vary not only across the melt stream but also over time – this is shown in Figure 2.27.



**Figure 2.27** Melt temperature versus time

The melt at TC4 (radial location -10 mm in Figure 2.26) drops from 215 °C to 180 °C within four seconds and then increases again to almost 215 °C within two seconds. This is rapid and substantial melt temperature variation! Interestingly, this melt temperature variation cannot be detected with an immersion melt temperature probe because of the slow response time.

In this study, the melt temperatures were also measured with an infrared thermometer. The results are shown in Figure 2.28.



**Figure 5.14** Cross section of a barrier screw

One variable that affects the melting in an extruder is the temperature at which the plastic is introduced to the extruder. By preheating the plastic in the feed hopper or before, the amount of heat that has to be added to melt the plastic in the extruder is reduced and, as a result, melting occurs earlier in the extruder. When it is suspected that an extrusion problem is related to melting, preheating is a method of diagnosing the problem.

Pre-heating material

The barrier screw has the following advantages:

Barrier screw advantages

- The barrier screw achieves more stable extrusion than a simple conveying screw.
- With a barrier screw, there is virtually no chance of unmelted material beyond the barrier section.
- There is a certain amount of dispersive mixing that occurs as the plastic melt flows over the barrier flight into the melt channel.

Next to these advantages, there are the following disadvantages:

Disadvantages

- Barrier screws are no better in performance than non-barrier screws designed with effective mixing sections.
- Barrier screws tend to be more expensive than non-barrier screws, particularly when purchased from an original equipment manufacturer (OEM).
- Because the solid material is restricted to the solids channel, the barrier screw is inherently more susceptible to plugging. This occurs when melting cannot keep up with the reduction in the size of the channel in the compression section of the screw, resulting in the solid material getting stuck in the screw channel. This creates a momentary obstruction to flow and leads to surging. Surging is a variation in extruder output.

## ■ 5.3 Melt Conveying

Melt conveying starts when the melting is completed in the extruder. Strictly speaking, melt conveying starts when melting starts, because the melting zone is where we have both solids conveying and melt conveying with the amount of solid material gradually decreasing and, at the same time, the amount of melted material

Mechanisms of conveying

gradually increasing. However, we define the melt-conveying zone as the region where all the plastic is completely melted.

The mechanism of melt conveying is viscous drag. In other words, the viscous forces acting on the plastic melt are responsible for the forward conveying of the melt. As we saw in the solids conveying zone, the viscous force at the barrel is responsible for forward conveying, while the viscous force at the screw is a retarding force. As a result, melt conveying is improved by reducing the barrel temperature and increasing the screw temperature. Interestingly, screw heating in the melt conveying zone makes more sense than barrel heating.

Optimum screw geometry

The optimum screw geometry for melt conveying can be determined from extrusion theory. The optimum helix angle is dependent only on the degree of non-Newtonian behavior of the plastic melt; it can be determined from the following expression:

$$\text{optimum helix angle [degrees]} = 13.5 + 16.5 (\text{power law index}) \quad (5.1)$$

Optimum helix angle

The optimum helix angle for melt conveying decreases as the power law index decreases or the plastic is more shear thinning. A similar expression can be derived for the optimum depth of the channel in the melt-conveying zone. The optimum depth depends on the viscosity, the pressure gradient, and the power law index. When the plastic becomes more shear thinning, the channel depth should be reduced to maintain good melt conveying.

### 5.3.1 Melt Temperatures

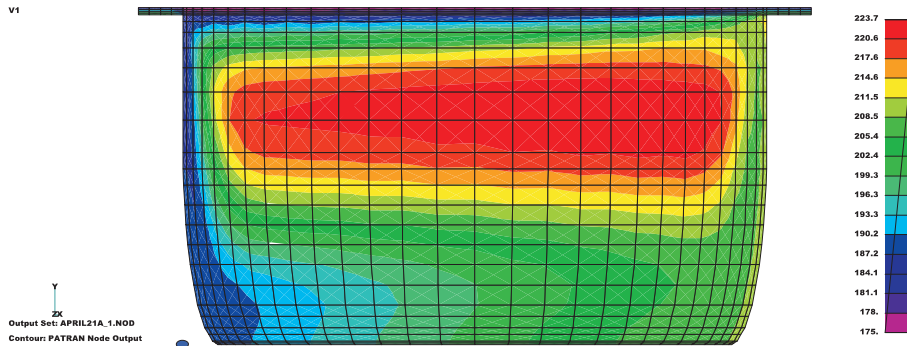
Predicting melt temperature by FEA

Because of the low thermal conductivity of the plastic melts, the temperatures in the melt-conveying zone can vary substantially. Local temperatures are difficult to measure because it is hard to put a probe in the screw channel while the screw is rotating. Melt temperatures can be predicted from extrusion theory using numerical techniques. A popular technique for this purpose is finite element analysis (FEA). With this technique the flow patterns and temperature distribution can be predicted.

Distribution of melt temperature

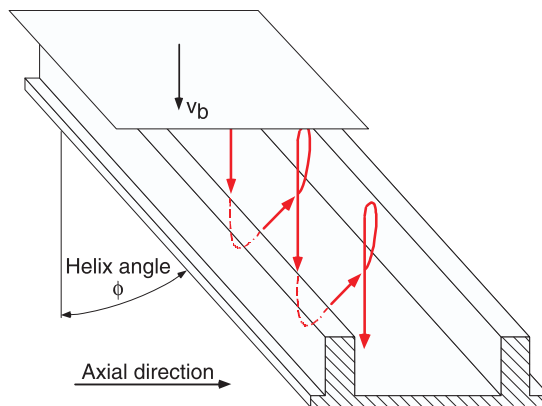
Figure 5.15 depicts the temperature distribution in the screw channel by looking at a cross section of the screw channel. The temperatures are shown in colors; different colors represent different temperatures, just like the weather map on the back page of USA Today. The lower surface of the picture is the root of the screw; the upper surface is the extruder barrel. The barrel is maintained at 175 °C and the screw surface is considered insulated (adiabatic). It can be seen in the figure that the highest melt temperatures occur in the mid-region of the channel, while the outside region of the channel remains at a lower temperature.





**Figure 5.15** Predicted melt temperatures in the screw channel

The reason for this temperature distribution is the way the plastic melt flows along the screw channel. We can illustrate this flow by unrolling the screw channel and by looking at it as a straight trough (see Figure 5.16) and the barrel as a flat plate.



**Figure 5.16** Flow along the unrolled screw channel

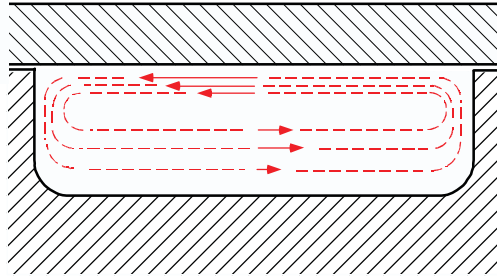
If we look at the flow relative to the screw, then the barrel moves in tangential direction,  $v_b$ , making an angle  $\phi$  with the channel. Angle  $\phi$  is the helix angle of the screw flight. A fluid element close to the barrel surface flows in the direction of the barrel until it gets to the pushing side of the flight. At this point, the element moves downward and then crosses the screw channel. When the element gets to the trailing side of the flight, the element moves up again close to the barrel surface and the element starts moving in the direction of the barrel again. This pattern repeats itself numerous times as long as the regular flight geometry is maintained.

Movement of fluid element through the barrel

If we look at the flow in the cross section of the screw channel (see Figure 5.17), we see the material moves to the pushing side of the flight at the top of the channel. This flow results from drag flow. At the bottom of the channel, the material moves toward the trailing side of the flight. This is a pressure flow resulting from the fact that the pressure at the pushing side of the flight is higher than at the trailing side

Different types of flow through channel

of the flight. If the leakage flow through the flight clearance is negligible, the amount of material flowing to the pushing flight flank is the same as the amount of material flowing to the trailing flight flank. Thus, we get a recirculating flow<sup>1</sup> as shown in Figure 5.17.



**Figure 5.17** Recirculating flow in the cross section of the screw channel

Melt temperature  
close to surface

The fluid is sheared as it flows along the screw channel and, as a result, there is viscous heat generation in the plastic melt. The actual temperatures that occur at different points in the screw channel are determined not only by viscous heating, but also by how efficiently this heat can be removed. If the barrel is cooled, the melt flowing close to the barrel surface can exchange heat and cool down efficiently. When this outer layer moves along the screw surface, it remains relatively cool even if the screw is insulated.

Melt temperature  
of inner layer

However, the situation is quite different for the inner layer. Because this layer is trapped in the inner recirculating region, it never gets close to the barrel. As a result, this layer has very limited opportunity for removal of its heat; the outer layer of plastic melt essentially insulates the inner layer. This explains why the temperature in the inner region of the screw channel tends to be higher than in the outer region. In Figure 5.15, the temperature in the center region is about 60 °C higher than the barrel temperature. Thus, it is clear that considerable melt temperature differences can occur in the screw channel.

If these temperature differences are carried to the end of the screw, the melt discharged into the die is not thermally homogeneous. This leads to flow problems in the die and distortion of the extruded product. It is important, therefore, to try to keep these non-uniform melt temperatures from reaching the end of the screw.

Importance of homoge-  
neous melt temperature

The most efficient method to do this is by incorporating mixing elements into the design of the screw. Mixing sections are not only important when we mix different plastics, but also when we extrude a single plastic in order to achieve a thermally homogeneous melt at the end of the screw.

<sup>1</sup> There are also small velocity components in the normal direction close to the flight flanks. At the pushing flight flank, the normal flow is downward toward the root of the screw; at the trailing flight flank, the normal flow is upward, toward the barrel. The normal flow also results from pressure differences. For instance, the pressure at the top of the pushing flight flank is higher than at the bottom of the flight flank, which is why the flow is downward in this region.

## ■ 5.4 Mixing

Mixing takes place both in the melting zone as well as in the melt-conveying zone of the extruder. The solid plastic typically moves in plug flow, which means that there is no relative motion between the solid plastic particles. As a result, there is little or no mixing in solids conveying. This means that complete mixing does not start until all the plastic has melted. For this reason, we will look at mixing only in the melt conveying zone of the extruder.

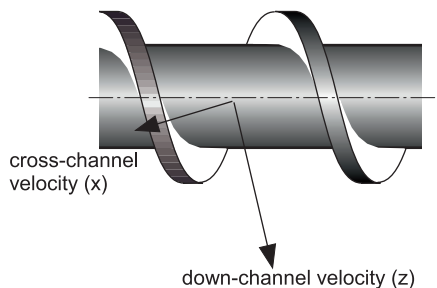
Mixing in the melt stage

### 5.4.1 Distributive Mixing

The extent of distributive mixing can be determined from the total shear deformation of the plastic melt in the melt conveying zone. The total shear deformation is also called the total shear strain; it is determined by the product of the shear rate and the length of time that the fluid is exposed to the shear rate. For instance, if the plastic melt is exposed to a shear rate of  $100 \text{ s}^{-1}$  for 15 seconds, the resulting shear strain is  $100 \times 15 = 1500$ . The shear strain is dimensionless. The shear rate is determined by the velocity profiles in the extruder.

Definition

Mixing in single screw extruders is determined mostly by the two main velocity components in the screw channel. These are the velocity in the direction of the channel (z-direction) and the velocity in the cross-channel direction (x-direction), see Figure 5.18.

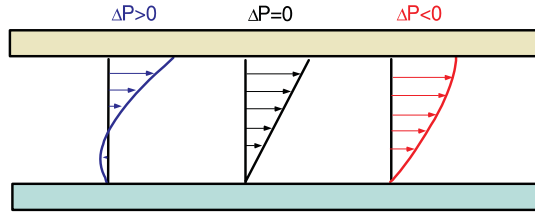


**Figure 5.18**

The two main flow components in a single screw extruder

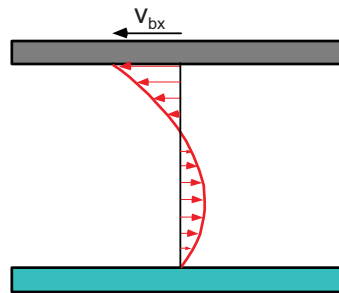
There is also a velocity component in the third direction (y-direction) parallel to the flight flank. This velocity component is usually very small and therefore can usually be neglected. The velocities in the down-channel direction depend on the pressure gradient; this can be positive, zero, or negative. When the pressure gradient is positive, pressure is increasing along the melt conveying zone; when the pressure gradient is negative, pressure is decreasing along the melt conveying zone. Down-channel velocity profiles for different values of the pressure gradient are shown in Figure 5.19.

Pressure gradient



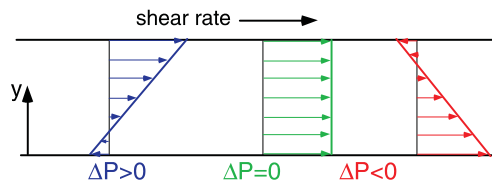
**Figure 5.19** Down-channel velocity profiles for three pressure conditions

Types of flow The cross-channel flow is shown in Figure 5.17. At the top of the channel, the material flows to the left by drag flow and at the bottom of the channel, the material flows to the right by pressure flow. Figure 5.20 shows the cross-channel velocities.



**Figure 5.20**  
Cross-channel velocity profile

Shear rate The shear rate can be determined from the velocity profile; the shear rate is equal to the slope of the velocity profile. This slope of the velocity profile is also called the velocity gradient. From the down-channel velocities, we can determine the down-channel shear rates; these are shown in Figure 5.21.



**Figure 5.21** Down-channel shear rates for three pressure conditions

When the pressure gradient is positive, the shear rates increase toward the barrel surface; when the pressure gradient is zero, the shear rate is constant, and when the pressure gradient is negative, the shear rates decrease toward the barrel surface. The same approach can be used to determine the cross-channel shear rate from the cross-channel velocities. The cross-channel shear rate profile is shown in Figure 5.22.

## ■ 6.8 Inspection and Training

It is the responsibility of the employer to establish and follow a program of periodic inspections of the extruder to ensure that all safeguards are in proper operating condition. The employer must also train operators in safe extruder operation before actually working on one. An effective training program should include the following four steps:

Proper training

- Tell workers how to do it safely
- Show them the safe way to do it
- Encourage them to ask questions
- Have them show you that they know how to do it safely

Three important rules regarding safety training:

- Never assume that employees know how to carry out a new task
- Frequent reminders should be given concerning safety procedures
- Never assume that safety rules are remembered

It is good practice to have regular safety inspections, at least once a quarter. The objective is to identify as many safety and health hazards as possible before they can cause an accident. The following checklist can be used for a successful safety inspection.

Checklists

### Housekeeping

Housekeeping

- Is the work place clean and orderly?
- Are floors free from protruding nails, holes, and loose boards?
- Are the aisles and passageways kept clear of obstructions?
- Are permanent aisles and passageways clearly marked?
- Are covers or guardrails in place around open pits, tanks, and ditches?

### Floor and wall openings

Floor and wall openings

- Are ladder ways and door openings guarded by a railing?
- Do skylights have screens or fixed railings?
- Do temporary floor openings have standard railings or guards?
- Are wall openings with a drop of more than 1.2 meter (4 feet) guarded by a railing?
- Do all stairways with four or more risers have a handrail?
- Are stairways strong enough, adequately illuminated, and slip resistant?

### Escape routes

Escape routes

- Are there enough exits to allow prompt escape?
- Do employees have easy access to exits?
- Are exits unlocked to allow people to leave?
- Are exits and exit routes equipped with emergency lighting?

Personal protective  
equipment

**Personal protective equipment**

- Is the required equipment provided, maintained, and used?
- Does the equipment meet requirements and is it reliable?

Employee facilities

**Employee facilities**

- Are facilities kept clean and sanitary?
- Are toilets kept clean and in good repair?
- Are cafeteria facilities a sufficient distance from toxic materials?

Medical and first aid

**Medical and first aid**

- Is there a hospital, clinic, or infirmary nearby?
- Are employees trained in first aid on each shift?
- Are physician-approved first aid supplies available?
- Are first aid supplies replenished as they are used?

Fire protection

**Fire protection**

- Are fire extinguishers available for the types of fire most likely to occur?
- Are there enough fire extinguishers available to do the job?
- Are fire extinguisher locations clearly marked?
- Are fire extinguishers properly mounted and easily accessible?
- Are all fire extinguishers fully charged and operable?
- Are special purpose extinguishers clearly marked?

Material handling  
and storage

**Material handling and storage**

- Is adequate clearance allowed in aisles?
- Are stacked materials interlocked, locked, and limited in height to maintain stability?
- Are storage areas kept free of tripping, fire, explosion, and pest hazards?
- Is proper drainage provided?
- Are signs warning of clearance limits posted?
- Are powered industrial truck operators adequately trained?

Machine guarding  
and signs

**Machine guarding and signs**

- Are point-of-operation guards in place and working on all equipment?
- Are all belts and pulleys less than 2.1 meters (7 feet) from the floor guarded?
- Are spinning parts guarded?
- Are warning signs properly located? Show warning signs on the extruder, see Figure 6.10.

# Index

## Symbols

3D finite element analysis 199  
34CrAlNi7 185

## A

abnormal sounds 165  
abrasive 162  
abrasive compounds 167  
abrasive fillers 18  
abrasive fillers downstream 173  
abrasive wear 162, 173  
ABS 105, 130  
accelerometer 166  
acceptable variation 206  
accidents 132  
accumulation in the hopper 188  
acetal (POM) 65, 130, 132  
AC motors 14, 167  
acrylic (PMMA) 64, 105  
acrylonitrile butadiene styrene (ABS) 64  
active flight flank 85  
actual operation 123, 128  
actual temperatures 92  
adhesion 56  
adhesive 58  
adjustable calibrating basket 204  
adjustable calibration sleeve 204  
adjustable depth 24  
adjustable die gap 203  
adjustable die restriction 156  
adjustable flow restriction 179  
adjustable grooved depth 210  
adjustable grooved feed extruder (AGFE) 210  
adjustable melt temperature probe 36  
adjustment nuts 57  
adjustment of the concentricity 115  
Advantage 204  
AGFE 210  
agglomeration 60, 189  
agricultural research 207  
air cooling 8  
air currents 20, 144, 189  
air entrapment 147, 156  
air filters 167  
air flow 168  
air hose 129  
air knife 55  
air velocity 25  
aisles 133  
allowed moisture content 108  
aluminum alloys 185  
aluminum cast heaters 7  
ambient air 201  
ambient temperature 20, 144, 187  
amorphous 64, 160  
amorphous plastics 64, 70, 72, 76, 112, 124, 172, 200  
amount of cooling 187  
amount of resident polymer at the discharge 192  
amperage of barrel heaters 168  
amplitude of the oscillations 27  
analysis of process problems 71  
annular channel 219  
annular dies 12, 114  
anti-oxidant 185  
anti-seize compound 167  
appearance 201  
appearance problems 73, 139, 144, 174  
arc-over 167  
armature cooling blower intake 169  
aromatic 185  
artificial intelligence-based technology 28  
attrition of the fiber 218  
automatic die adjustment 116  
automatic feed to hopper 171  
automatic hopper feeder 144  
automatic screen changers 11, 203  
automatic shutoff 21, 132  
automation 175, 186  
auto-tuning controller 28  
axial adjustment 115  
axial length of the feed opening 143  
axial loads 16  
axial melting length 87, 227  
Axon mixing section 100

- B**
- B-10 life 17
  - backlash 143
  - backlash of the gearbox 16
  - back relieving 112
  - ball mill 104
  - barium chromate 194
  - barrel 5, 87, 124, 167, 169
  - barrel and die temperatures 187
  - barrel cooling 200, 201
  - barrel friction 84
  - barrel liner 167
  - barrel or die temperature variations 171
  - barrel pins 215
  - barrel pressure 140
  - barrel temperature 19, 87, 128, 140, 156, 171
  - barrel temperature measurement 24
  - barrel temperature sensors 167
  - barrier flight 88, 105, 214
  - barrier screw 88, 144, 214
  - batch internal mixers 59
  - Battenfeld 175
  - beard formation 85
  - bearing covers 165
  - bearing problems 165
  - bearing temperature 166
  - Beddus 203
  - belt 134, 167, 169
  - belt guards 168
  - belt tension 167
  - beneficiated calcium carbonate 182
  - bimetallic liner 5
  - biological degradation 146
  - black box process 137
  - black specks 145
  - bleed trim 203
  - bleed valve 11
  - blenders 157
  - blending 171
  - blister ring 102, 160
  - blockage 161
  - blockage along the screw 140, 172
  - blocking 140
  - blower motors 170
  - blowers 8
  - blow molding 142, 209
  - blown film 114, 209
  - blown film dies 12
  - blown film extrusion 142, 181
  - blown film line 59
  - blow up ratio 59
  - bore-scope 167
  - boron nitride 85, 198
  - brass 130
  - breaker plate 9, 31, 129, 140
  - breaker plate recess 130, 170
  - bridge with multiple probes 24
  - bridging 79, 140, 171, 189
  - broader process control 189
  - bronze metal particles 165
  - brush holder 169
  - brushless DC drives 15
  - brushless DC motors 167
  - brush sparking 167
  - BSP feeders 213
  - bubbles 156, 174
  - bucket brigade 18
  - buildup of colorant 195
  - buildup of material inside the die 145
  - buildup of metal particles 161
  - bulk density 78, 138, 140, 213
  - bulk handling equipment 157
  - bulk handling hardware 157
  - bulk materials 78
  - bulk solids pump (BSP) 213
  - burning 73
  - bushing 167, 169
  - butt end of the screw 167
  - Byk-Gardner 195
- C**
- cable jacketing 115
  - CaCO<sub>3</sub> 180
  - cafeteria facilities 134
  - calcium carbonate (CaCO<sub>3</sub>) 47, 180, 182
  - calcium deposits 187
  - calcium scale 47
  - calibrating 61, 138
  - calibrating device 53
  - calibration 204
  - calibration of all temperature controllers 170
  - calibrator 53, 145, 204
  - cancer causing 183
  - candles 130
  - capability of measuring instruments 138
  - capillary 21
  - capillary strain gage 22
  - capillary strain gage transducers 132
  - carbon black 194
  - Cartesian coordinate system 225
  - cartridge heater 85
  - cast acrylic 130
  - cast film extrusion 142
  - cast-in heaters 7
  - cast iron powder 165
  - catalytic properties 185
  - catalytic surface conversion 85
  - catastrophic failure 165
  - causes of process variation 52, 208
  - cavity mixers 98
  - cavity transfer mixer (CTM) 98
  - center region 97
  - centrifugal action 60
  - centrifugal dryer 60
  - ceramic heaters 7
  - chance of degradation 97, 104, 126, 216
  - change-over 177, 183, 195, 203
  - change-over time 177, 190, 194, 203
  - changes in ambient conditions 144
  - chart recorder 128
  - chemical degradation 146



- chemical purging compounds 130
- chemical reactions 86
- chilled air 202
- chill roll casting 55
- chill roll unit 55
- chillWARE 149
- chips 169
- chloride ion concentration 170
- chlorinated polyethylene 105
- chlorophyll 194
- choker bar 57, 156
- chromium pigments 194
- circular dies 12
- circular feed hopper 79
- circular hopper 7, 79
- circumferential grooves 98
- circumferential orientation 117
- clamp area 169
- clam shelling 118, 119
- clean filter screen 170
- cleaning tools 130
- clean screw 172
- clean the die 129
- clean the extruder 123
- clearance 134, 161
- clear plastics 194
- clinic 134
- closed-loop control of extruded tubing 128
- closed-loop control systems 54
- CO<sub>2</sub> 216
- coated wires 115
- coat hanger 119
- coat hanger manifold 119
- coating 56, 85
- coefficient of friction 140
- coextruders 202
- coextrusion 56
- coextrusion die 14
- coextrusion flow 193
- coiler 61
- cold air 206
- cold drawing of man-made fibers 113
- cold start-up 125
- collapsing frame 59
- color 138, 194
- colorants 194
- color contour plot 38
- colored plastics 194
- colored resin particles 194
- colored resins 198
- colorimeter 194
- color measurement 195
- color veil 195
- commodity polymers 191
- commutator 169
- compacted clump 79
- comparative facts 163
- compatibilizer 145, 174
- competitive disadvantage 180
- competitive world market 219
- complete extrusion line 200
- composition of the metal surface 185
- compounding extruder 183
- compounding lines 59
- compounding procedure 145, 174
- compressibility 78, 79
- compression ratio 157, 162, 173
- compression ratio of the screw 144
- concave side 113
- concentricity 116
- concentricity adjustment 116
- concentric twin screw extruder 211
- condition of seal 169
- conductive melting 227
- conductor 115
- cone-and-plate rheometer 74
- conical nozzle 206
- conical screws 3
- consistency index 70
- consistency of the feed material 188
- contact pressure 204
- contaminants 9
- contamination 123, 145, 147, 157, 165, 167, 173
- contamination of the plastic 160
- contiguous solids melting (CSM) 34, 85, 227
- continuity 170
- continuous band of screen material 12
- continuous improvement 186
- continuous internal mixers 59
- continuous screen changers 11
- control 19, 20
- control charts 207
- conventional barrier 214
- conventional extruders 176
- conventional SPC 207
- conventional (vulcanizable) elastomers 66
- conveying ability of the pump section 109
- conveying capability 87
- conveying capacity 156
- conveying characteristics 141, 210
- conveying rate of the second stage 110
- conveying system 173
- cooling 7, 9, 13, 61, 72, 111, 112, 156, 185
- cooling capacity 216
- cooling channels 187
- cooling device 53
- cooling rate 20, 128
- cooling section 55
- cooling system 160, 172
- cooling to the feed throat 124
- cooling water temperature 20
- copper mesh cloth 130
- copper phthalocyanine 194
- coring the screw 85
- corona discharge treatment 56
- corona treaters 132
- co-rotating twin screw extruder 2
- corrosion pencil anodes 169
- corrosion-resistant materials 162, 173

- corrosive attack 123
  - corrosive substance 173
  - corrosive wear 162, 173
  - cost effective extrusion 198
  - counter-pressure of the haul-off tracks 204
  - counter-rotating twin screw extruder 3
  - coupling 15
  - cracked bearing or broken gear 165
  - cracking 160, 167
  - cracks 169
  - crammer feeder 7, 78, 79, 171
  - crammer screws 7
  - CRD 217
  - CRD barrier section 214
  - CRD mixer 105, 213
  - critical diehead pressure for vent flow 110
  - critical draw ratio 142
  - critical level in the hopper 144
  - critical process variables 187
  - critical skin thickness 148
  - critical solid skin thickness 149
  - critical value 142
  - cross-channel flow 94
  - cross-channel shear rate 94
  - cross-channel shear strain 96
  - cross-channel velocities 94
  - crosshead 115
  - crosshead die 115
  - crosslinked material 157
  - crosslinking 64
  - crosslinking reaction 64
  - cross section of the screw channel 91
  - crystal 64
  - crystalline regions 64
  - crystalline wax 130
  - crystallites 64
  - crystal polystyrene 65
  - CSM 34, 228
  - cubic 60
  - curing 66
  - cut off flow from the hopper 129
  - cutter 53, 61
  - cutter knives 60
  - cycle time 141
  - cyclical noise 165
  - cyclic variation 49, 141
- D**
- damaged belts 167
  - dark colors 123, 194, 198
  - Darnell and Mol 225
  - DA software 187
  - data acquisition (DA) 187
  - data acquisition system (DAS) 21, 29, 50, 128, 143
  - data collection rate 29, 44
  - DC brush motor 14, 167
  - DC motor 14
  - dead spots 23, 98, 119, 157
  - decomposition 125
  - deep flighted screw 160
  - defect 163
  - defective bearings or gear teeth 165
  - degassing 73, 77, 86, 108
  - degradation 18, 73, 145, 147, 201, 214
    - problems 138
    - promoting substances 147
  - degradation of the plastic 109
  - degree of fill in the grooved barrel section 210
  - degrees of shear thinning 191
  - demixing action 96
  - densify feed stock 171
  - density 71, 74, 180, 182
  - depolymerization 130
  - depth filtration medium 157
  - Derenzinski 225
  - derivative action 28
  - descaler 47
  - design of experiments (DOE) 206, 207
  - devolatilization 5, 77, 108
  - dial indicator 166
  - diameter of the calibration basket 204
  - diameter recognition system 204
  - diamondback hopper 80
  - diaphragm 21, 31, 132
  - dicer 60
  - die 1, 13, 140, 156, 167
  - die design 13, 111, 145, 172
  - die drool 85, 145, 174
  - die face pelletizers 60
  - die forming 110
  - die gap 156
  - diehead pressure 16, 20, 110
  - diehead pressure fluctuation 128
  - die heaters 167
  - die inlet pressure 30
  - die land 174
  - die lines 174
  - die lip buildup 183
  - die opening 174
  - die plate freeze-off 60
  - die restriction 161
  - die swell 111
  - die temperature 19, 124, 156, 174
  - die temperature sensors 170
  - die tooling 124
  - different functional zones 225
  - digital DC brush drives 15
  - dimensional changes 50
  - dimensional control 208, 214
  - dimensional variation 208
  - dimensionless layer thickness 190
  - dimensionless time 190
  - dimensions of the extrudate 128
  - dimensions of the extruded product 20, 127
  - direct drive 15
  - direct extrusion 183, 217
  - dirty oil 165
  - discharge channel 219
  - discharge end of the screw 140

- discharge melt temperature 201
  - discharge pressure 49
  - discoloration 125, 145
  - discolored armature 167
  - Disco purge 195
  - diskpack 213
  - dislodge the bridging 171
  - dispersed solids melting (DSM) 86, 227
  - disperse mixing ability 214
  - dispersive 214
  - dispersive mixing 107, 213, 214
  - dispersive mixing capability 158
  - dispersive mixing elements 157
  - dispersive mixing sections 102
  - displacement behavior 193
  - displacing polymer 193
  - distortion of the extruded product 92
  - distributive 213
  - distributive mixing 93, 214
  - distributive mixing devices 208
  - distributive mixing element 158
  - distributive mixing sections 98
  - ditches 133
  - diverging discharge channel 219
  - door interlock 170
  - door openings 133
  - double flighted screw 88, 173
  - double wave screw 101
  - down-channel shear rates 94
  - down-channel shear strain 96
  - down-channel velocity profiles 93
  - downstack mode 55
  - downstream cooling conditions 128
  - downstream equipment 124
  - downstream feed port 60
  - downtime 165, 183, 190
  - downtime needs 186
  - drag flow 94, 229
  - drag flow rate 140
  - drag induced conveying 78, 80
  - drag induced melt removal 87, 227
  - drainage 134
  - drawdown 13, 111
  - draw ratio 142, 174
  - draw resonance 141, 142, 174
  - drive 169
    - potentiometer 170
  - drive belts 165, 167
  - drive fuses 167
  - drive motors 167
  - drum or disk extruder 2
  - dry die face pelletizers 60
  - dryer 200
  - drying capacity 123
  - drying plastics 108
  - drying system 53
  - DSM 228
  - DSM melting mechanism 227
  - DSM model 227
  - dual heads 203
  - dual strand extrusion 178
  - Dulmage 100
  - Duranickel 162
  - dust 167
  - Dutch twill 10
  - dyes 194
  - Dynamar from Dyneon 183
  - dynamic choke 109
  - dynamic purging methods 195, 197
  - dynamic response 22
- E**
- Easychange 203
  - eccentrically 167
  - edge trim 203
  - effective length 82
  - effective length of the screw 188
  - effective mixing action 100
  - effectiveness of purging 198
  - effect of air currents 25
  - efficiency 175
  - efficient cooling 181
  - efficient distributive mixing 215
  - efficient extrusion 186, 187
  - efficient extrusion operations 201
  - efficient melting 87
  - efficient operation 187
  - efficient troubleshooting 187
  - Egan mixer 104
  - Egan mixing section 103
  - E-gels 157
  - Egeplast Werner Strumann GmbH 203
  - elastic effects 179
  - elastic nature 111
  - elastomers 66
  - electrical band heaters 7
  - electrical codes 132
  - electrical enclosures 132
  - electrical properties 160
  - electric drill 130
  - electricity 131
  - electric motor 14
  - elongated feed opening 80
  - elongational 214
  - elongational flow 106, 213
  - elongational mixing 214
  - elongational mixing action 214
  - elongational mixing devices 213
  - elongational stresses 102
  - emergency lighting 133
  - emergency stop 132, 135
  - emergency stop switch 169
  - employee facilities 134
  - energy consumption 100, 177, 181, 200, 202
  - energy cost 200
  - energy cost per kilogram 200
  - energy cost per year 200
  - energy efficiency 15, 16, 29
  - energy loss 15
  - energy reduction 183
  - energy requirement in extrusion 200
  - energy savings 201
  - energy use 203
  - energy use of the extruder 202
  - engineering 138

- engineering calculations 13
  - entanglements of the molecules 70
  - enthalpy 29, 72
  - enthalpy difference 72
  - entrapped air 11, 156
  - environment 189
  - epoxy 64, 105
  - equilibrium moisture content 108
  - equipment 187
  - equipment design 187
  - Esde 175
  - ethyleneacrylic acid (EAA) 74
  - excessive die restriction 172
  - excessively high pressures 125
  - excessive noise 167
  - excessive pressure 132
  - excessive screen pack restriction 172
  - excess wear 169
  - exit routes 133
  - exits 133
  - exit velocity 110
  - extension cords 135
  - external coefficient of friction 78, 79
  - external cooling 206
  - extinguishers 134
  - extraction section 110
  - extraction section of the screw 109
  - extrudate swell 111
  - extruded product 85
  - extruder 1
  - extruder barrel 5
  - extruder barrel temperatures 128
  - extruder drive 14
  - extruder feed hopper 206
  - extruder motor load 184
  - extruder output 169
  - extruder output rate 204
  - extruder performance 84, 187
  - extruder screw 5, 124, 156
  - extruders without gear reducer 176
  - extrusion blow molding 181
  - extrusion blow molding machines 53
  - extrusion coating 57, 181
  - extrusion compounding 59
  - extrusion compounding lines 53
  - extrusion die 12, 110, 201
  - extrusion equipment 186
  - extrusion lamination 58
  - extrusion line 53
  - extrusion pressure 184
  - extrusion technology 219
  - extrusion theory 225
- F**
- fabric 57
  - Farrel 213
  - fast cooling 147
  - Fast Fourier Transform 44
  - fast variation 141
  - faulty bearings 166
  - Fe<sub>2</sub>O<sub>3</sub> 194
  - feed block system 14, 56
  - feeders 157
  - feed hopper 7, 78
  - feed hopper design 171
  - feed housing 187
  - temperature 46
  - feed housing water flow rate 187
  - feeding characteristics 83
  - feeding device 188
  - feeding problems 126, 143, 171
  - feed opening 6, 125, 143
  - feed problems 124, 129
  - feed section 77, 157, 167
  - feed section casting 169
  - feed stock characteristics 209
  - feed stock variability 188
  - feed stock variation 171
  - feed temperatures 171
  - feed throat 6, 78, 140
  - feed throat housing 84
  - feed throat temperature 156
  - feed tubes 157
  - FFT 44
  - fiber 12
  - fiber addition 218
  - fiber addition port 218
  - fiber breakage 218
  - fiber feed rate 219
  - fiber reinforced plastics (FRP) 218
  - fiber spinning 142, 178
  - fiber spinning lines 53
  - fiber wetting 218
  - fibrous strand bundles 219
  - fibrous strands 219
  - filled polyolefins 181
  - filler 180
  - film and sheet extrusion lines 53
  - film extrusion 183
  - film lines 55
  - filter 169
  - final extruded product 183
  - finer 157
  - finite element analysis (FEA) 90, 208
  - first aid 134
  - first aid supplies 134
  - first stage 156
  - first stage of the screw 109
  - fishbone chart 147
  - flame treatment 56
  - flat film 12, 117
  - flat film or sheet die 110
  - flat plate 229
  - flat plate approximation 229
  - flat trough 229
  - FLC 28
  - flexible bands construction 204
  - flexible manufacturing 203
  - flexible membrane 57
  - flex lip adjustment bolts 57
  - flight clearance 87, 92
  - flight flank radius 84
  - flight helix angle 225

- floating sleeve intermeshing pin mixer 215
  - flood fed 126
  - flood feeding 188, 210
  - flood feeding rate 127
  - flood feed rate 82
  - floor openings 133
  - flow along the unrolled screw channel 91
  - flow behavior of plastic melts 67
  - flow-chart 163
  - flow of the feed material 188
  - flow of tower/municipal water source 168
  - flow properties 111, 138
  - flow rate 111
  - flow rate of cooling water 187
  - flow rate ratio (FRR) 192
  - flow simulation 199
  - flow splitter 115
  - flow splitting 101, 179
  - fluid heating 8
  - fluidized bed 129
  - fluorinated polymers 183
  - fluorinated PPA 183
  - fluoro-elastomer 142, 145
  - fluoropolymers 123
  - flushing action 190
  - flushing out the resin 189
  - flush lines with scale removing compound 169
  - flush-mounted melt temperature 160
  - flush-mounted probe 24, 172
  - fluted mixing sections 102
  - foamed plastics 182
  - foam extrusion 182, 210, 216
  - foaming action 130
  - foil 57
  - force balance 225
  - forced conveying 18
  - fork lift truck 132
  - forming 77
  - forward pumping capability 98, 100, 104, 214
  - four-motor CMG torque drive 175
  - fractional melt plastic 68
  - fraying 167
  - free extrusion process 53
  - freeze-off 60
  - frictional force 81, 225
  - FRP compounds 218
  - full factorials 207
  - full intermeshing action 216
  - fully beneficiated 182
  - fully intermeshing 3
  - fully streamlined die 119
  - fumes 135
  - functional product problems 160
  - functional product properties 139
  - functional zone 77
  - fuzzy logic control 28
  - fuzzy rules 28
- G**
- gaskets 167
  - gas-laden melt 216
  - gearbox 15, 167, 169
  - gearbox assembly 167
  - gearbox problems 143
  - gearcase 166
  - gear or bearing problems 165
  - gear pump 17, 48, 54, 60, 156, 161, 179
  - gear reducer 16, 176
  - gears 165
  - gel 157, 173, 214, 215
  - gel capture capability 173
  - generation of a knowledge base 28
  - geometrical sections 77
  - GFE 209
  - glass fiber 162
  - glass transition temperature 71, 76, 138, 160
  - glued 166
  - gouges 157, 169
  - granulators 202, 203
  - gravity induced 80
  - gravity induced conveying 78
  - Gregory 103
  - grooved barrel extruders 210
  - grooved barrel in feed section 171
  - grooved feed extruders (GFE) 83, 84, 157, 209, 210
  - grooved feed section 78, 83
  - grooved feed throat 141
  - grooved liner 84
  - grooves 157
  - Gross 194
  - ground connections 170
  - grounds 132
  - guardrails 133
  - guards 133, 169, 170
- H**
- hairnets 131
  - hand-squeeze test 79
  - hanger die 118
  - hang-up 104, 173
  - hang up or build up 85
  - Hansen 181
  - “hard” water 47
  - Hastelloy 162
  - haul-off 61, 204
  - HDPE 74, 75, 141, 181
  - head 204
  - head/die cords 170
  - head pressure 126
  - health hazards 133
  - heat 131
  - heat-activated chemical reaction 130
  - heater clamping bolts 170
  - heater contacts 132
  - heater terminal connections 170
  - heat exchange 165
  - heating 7, 72
  - heat insulating blanket 201
  - heat insulating material 201

- heat loss 201
  - heat resistant gloves 129, 131
  - heat resistant layer of plastic 126
  - heat-sensitive materials 105
  - heat soak 124
  - heat-soak cycle 130
  - heat transfer 181, 187, 216
  - heat transfer conditions 189
  - heat transfer fluid 85
  - Helibar extruder 211
  - helical channels 116
  - helical flight 5
  - helical flow path 95
  - helical orientation 103
  - helical solid ribbon 35
  - helix angle 84, 87, 91, 104
  - helix angle of the barrier flight 104
  - hemi-spherical cavities 98
  - herringbone gear 16
  - HHT 217
  - HHT screw geometry 216
  - high die restriction 172
  - high discharge pressures 217
  - higher barrel temperature 87
  - high filler levels 217
  - high frequency envelope (HFE) 166
  - high frequency impact sounds 166
  - high friction 209
  - high heat transfer (HHT) screw 216
  - highly compressible materials 79
  - highly corrosion-resistant 162
  - highly stabilized version of the plastic 126, 157
  - high melt index 123
  - high melt index masterbatch 159
  - high melt temperature 139, 157, 160, 172
  - high molecular weight droplets 157
  - high motor load 139, 161
  - high oil temperatures 165
  - high precision extruded product 15
  - high-precision extrusion 18
  - high precision operations 14
  - high pressure 131
  - high-pressure alarm 132, 135
  - high pressure drop 104
  - high restriction at screen pack 172
  - high-restriction die 110
  - high-speed extruder 3, 177
  - high-speed extrusion 175
  - high-speed Helibar extruder 211
  - high-speed single screw extruder (HS-SSE) 175, 183
  - high-speed twin screw extruders 82
  - high stock temperatures 147
  - high stress region 102, 106
  - high temperature 161, 167
  - high temperature and pressure alarms 165
  - high temperature plastics 123
  - high viscosity plastics 160, 176, 193
  - high voltage devices 132
  - historical data 137
  - hoist 129, 132
  - hoop strength 117
  - hopper 140, 157
  - hopper barrier guards 169
  - hopper loaders 203
  - hopper slide valve 126
  - hopper with a square or rectangular cross section 79
  - horseshoe die 118
  - horseshoe manifold 119
  - hoses 167
  - hospital 134
  - hot air 206
  - hot plastic 131
  - hot spot 39, 208
  - housekeeping 133
  - hydraulic ram 11
  - hydraulic screen changers 11
  - hydrolysis 109, 202
  - hygroscopic materials 5, 108
  - hyperactive screw 201
- I**
- identify the problem 163
  - identify the process 163
  - ID waviness 43
  - IKV (Institut für Kunststoffverarbeitung = Institute for Polymer Processing) 182
  - imbalance 166
  - imbalance between the first and second stages of the extruder 156
  - immersion melt temperature probe 35
  - immersion probe 24, 172
  - immersion TC 23
  - immersion temperature probe 160
  - impending failure 165
  - important process parameters 19
  - improper use of the plastic product 160
  - impurities 182
  - IMS 198
  - inadequate exhaust air flow 167
  - incoming material 157
  - incompatible component 174
  - Inconel 162
  - in control 206
  - incorrect screw design 110
  - indigestion 210
  - indigo 194
  - indirect drive 16
  - induction heating 7
  - induction time 71, 73, 138
  - inefficient venting 147

- infiltration 219
  - infirmity 134
  - infrared (IR) detectors 23
  - infrared (IR) temperature measurement 143
  - infrared radiation 36
  - infrared thermometers 36
  - in-house compounding 183
  - injection molding machines 227
  - inlet channel 12, 117
  - inline 115
  - inline die 115
  - inner layer 92
  - inner recirculating region 92, 96
  - inner region of the channel 96
  - inner vortex 206
  - Inoex 204
  - inorganic 194
  - inorganic pigments 194
  - input 165
  - inside diameter of barrel 169
  - inspection 133
  - Institut für Kunststofftechnik (IKT) 211
  - instrumentation 19, 137, 187
  - instrument panel 189
  - insufficient barrel friction 172
  - insulate all hot oil lines 202
  - insulated TC 25
  - insulated wires 132
  - insulate extruder 171
  - insulation spark testers 132
  - insulation tape in conduit box 169
  - intake capability 6
  - integrated sheet and thermoforming lines 53
  - intelligent manufacturing methods 175
  - intensely cooled grooved feed extruders 210
  - interface 193, 226
  - interface distortion 57
  - interlocked 132
  - interlocking guards 135
  - intermediate 165
  - intermediate material 190
  - intermediate pelletizing 183
  - intermeshing action 48
  - intermeshing region 216
  - internal air pressure 54
  - internal coefficient of friction 78, 79
  - internal cooling 206
  - internal die surfaces 174
  - internal heat generation 8
  - internal screw heating 85
  - internal stresses 113
  - intractable plastics 4
  - iron oxide 194
  - irregular feeding 144
  - IR temperature measurement 38
- J**
- J-Tex 85
  - junction boxes 135
- K**
- K&A Knoedler 175
  - keyways 130
  - Kramer 203
  - Krause 197
  - Krauss-Maffei 203
  - K-tron 213
  - Kuhne 175
  - Kulikov 183
  - Kynar from Atofina 183
- L**
- labor intensive 204
  - Labtech Engineering 217
  - ladder ways 133
  - laminating 56
  - lamination 56
  - land length 145
  - land region 12, 110
  - land section 117
  - large diameter extruders 132
  - large diameter pipe extrusion 206
  - large differences in melt temperature 208
  - large sidegroup 64
  - large volume compounding 165
  - laser gage 54
  - layer thickness 192
  - layflat film 59
  - L/D 4, 209
  - L/D of the extruder 161
  - LDPE 73, 145, 184, 194
  - lead chromate 194
  - leading side of the screw flight 110
  - leakage at seals 169
  - leakage flow 92
  - leaks in closed-loop systems 168
  - legs 113
  - length of the compression section 144, 162
  - length-to-diameter (L/D) ratio 4, 209
  - LeRoy 103
  - LeRoy mixer 104
  - less restrictive die 171
  - less restrictive screen pack 171, 172
  - level of vacuum 124
  - levels of crystallinity 65
  - lifting techniques 132
  - light colors 194, 198
  - lightly colored plastics 123
  - lights off 186
  - light transmission 65
  - linear plastics 141
  - lines 145
  - line speed 20, 115
  - line tension 20, 128
  - liquid crystalline plastics (LCPs) 66
  - LLDPE film 183



loading pattern 202  
 log-log plot 139  
 longer extruder barrel 156  
 long loose hair 131  
 long residence times 147, 157  
 long shaft wire brush 130  
 loose boards 133  
 loose clothing 131  
 looseness in rotating machinery 166  
 loss of physical properties 145  
 loss of volatiles 145  
 low bulk density feed stock 171  
 low cost fillers 180  
 low-density polyethylene (LDPE) 65  
 lower critical shear rate 142  
 lower mesh screens 172  
 lower portion of the channel 95  
 lower viscosity resin 193  
 lowest viscosity 198  
 low frequency instabilities 144  
 low friction coating 85, 145, 171, 173, 174  
 low friction screw coating 171, 172  
 low melt index masterbatch 159  
 low melt index material 123, 158  
 low melting point plastics 126  
 low melt temperatures 185  
 low oil levels 165  
 low output 139  
 low speed extruders 3  
 low-temperature gas stream 206  
 low temperature plastics 123  
 low viscosity plastics 160  
 lubricating effect 184  
 lubricating oil 165  
 lubrication 185

## M

machine downtime 166  
 machine geometry 77  
 machine troubleshooting 164

Maddock 103  
 Maddock mixer 104  
 Maddock mixing section 157  
 main drive 202  
 main flight 105  
 main power switch 124  
 maintenance 138, 164, 166  
 maintenance activities 164  
 Maintenance Professional 164  
 maintenance software 164  
 maintenance tool 207  
 mandrel 116  
 manifold 12, 14, 117  
 manifold system 178  
 manual 203  
 manual cleaning 195  
 manual screen changers 11  
 manual tuning 28  
 manufacture 98  
 manufacturing discipline 187  
 marble 182  
 Massachusetts Institute of Technology (MIT) 182  
 material blockage 172  
 material change 158  
 material choice 160  
 material consumed in the change-over 177  
 material cost 180  
 materials QC 138  
 material stuck 172  
 Maxflexx 205  
 measurement 61  
 measurement error 22, 25  
 measurement of melt temperature 160  
 measure screws and barrels 167  
 mechanical degradation 146  
 mechanical properties 160  
 mechanical specific energy consumption 177  
 medical 132, 134  
 medical tubing 14  
 melamines 64

melt conveying 77, 86, 88, 89, 228  
 melt conveying problems 171  
 melt conveying zone 90, 93  
 melt displacement behavior 190  
 melt-fed extruder 1  
 melt film 85, 87, 226  
 melt film thickness 87  
 Melt Flipper 179  
 melt flow index (MFI) 68  
 melt fracture 141, 174, 183  
 melt index (MI) 68, 138  
 melt index tester 68  
 melting 85, 226, 228  
 melting capacity 88, 202, 209  
 melting efficiency 87  
 melting or plasticating 77  
 melting point 71, 75, 138  
 melting problem 140, 144, 171, 209  
 melting rate per unit down-channel distance 227  
 melting related instabilities 202, 209  
 melting theory 226  
 melt pool 35, 85, 88, 226  
 melt pressure 19, 29, 30, 48, 128, 187  
 melt pressure measurement 135  
 melt pump 179, 228  
 melt strength 209  
 melt temperature 19, 29, 35, 90, 104, 128, 160, 174, 175, 187, 189, 201, 214  
 melt temperature and pressure fluctuations 167  
 melt temperature differences 92  
 melt temperature distribution 38, 208  
 melt temperature fluctuation 214  
 melt temperature measurement 23



- melt temperature variation 38, 141, 143, 144, 208
  - melt viscosity 104, 138
  - membership functions 28
  - mercury 21, 31, 132, 135
  - meshing gear teeth 165
  - mesh number 10
  - mesh value screens 156
  - metal glass (Lunac) 198
  - metallic particles 161
  - metal particles 162, 173
  - metal sheath 24
  - metering section 109
  - meter-weight of the pipe 204
  - method of internal pipe cooling 205
  - methods to increase efficiency 175
  - mica insulated heaters 7
  - Michaeli 120
  - microcellular foam 182
  - micron rating 10
  - mid-region of the channel 90
  - milieu 189
  - minimum residence time 190, 191
  - misalignment 166
  - mixed alkyl-aryl phosphites 185
  - mixing 10, 77, 86, 93, 158
  - mixing capability 100
  - mixing elements 92
  - mixing screw 174
  - mixing sections 10, 158
  - mix quality 158
  - mixture 158
  - modular extruders 203
  - moisture-induced degradation 109
  - moisture level of feed stock 187
  - molecular weight 68, 184, 209
  - molybdenum disulfide 183
  - Monastral blue 194
  - morphology 65
  - motor 15
  - motor bearings 169
  - motor brushes 167
  - motor efficiency 167
  - motor load 19, 29, 84, 126–128, 140, 161, 166, 187, 189, 214
  - motor problems 143
  - motor vibration 168
  - movable guards 131
  - moving parts 131
  - MTC 166
  - multi-flighted discharge 144
  - multi-flighted screw 88
  - multi-layered product 14
  - multi-layer pipes 204
  - multi-lumen tube 113
  - multi-manifold system 14, 56
  - multiple flights 88
  - multiple haul-offs 180
  - multiple knife cutter 60
  - multi-screw extruder 2
  - multi-strand extrusion 178
  - multivariate analysis (MVA) 207
  - municipal water 169
  - MVA system 207
- N**
- narrower pellet size distribution 188
  - natural bridge 79
  - NCF (Nexxus Channel-F) 219
  - neck ties 131
  - neutral screw 9
  - new developments in extrusion 175
  - Newtonian 70
  - Newtonian fluid 104, 229
  - Nexxus technology 219
  - Niemeier 199
  - nip roll 55, 59, 131
  - nip roll section 54
  - nitrided steel 185
  - noise level 176
  - noise level of bearings 168
  - no material in the feed hopper 171
  - nominal speed 14
  - non-catalytic steels 185
  - non-coated part of the screw 198
  - non-colored plastics 194, 198
  - non-contact temperature measurement 23
  - non-foam extrusion 182
  - non-insulated TC 25
  - non-intermeshing 3
  - non-isothermal analysis 38
  - non-linear fluid 69
  - non-Newtonian 69
  - non-Newtonian behavior 90
  - non-Newtonian fluids 104, 229
  - non-Newtonian plastics 38, 142
  - non-return valve (NRV) 215
  - non-uniform flow 72, 201, 208
  - non-uniform melt temperatures 97, 179, 208
  - non-uniform mixing 97
  - non-uniform plastic temperatures 72
  - non-uniform temperatures 201
  - non-vented single screw extruder 160
  - no-output condition 171
  - Noriega 209
  - normal flow 92
  - Novachem 198
  - Nucrel Disco purge 196
  - number of screens in the screen pack 156
  - nylon (PA) 65, 130, 142
- O**
- objective 163
  - observed and comparative facts 163
  - obstruction 133
  - octahedral shape 60
  - off-spec product 188
  - oil 167
  - oil cooling 8
  - oil filter 169
  - oil flow to all bearings 168

- oil heat exchanger 169
  - oil leaks 168
  - oil pump 165
  - oil sump 169
  - oil temperatures and pressures 168
  - on-off control 26
  - on-off temperature control 144
  - onset of sharkskin 184
  - on-the-fly adjustment of pipe 204
  - open discharge 140
  - opening of a door 189
  - operating conditions 77
  - operating cost 217
  - operating procedures 172, 175
  - operator friendly 98
  - operator skill 217
  - optical properties 160
  - Optifoam® 182
  - optimizing the process 187
  - optimum depth of the channel 90
  - optimum helix angle 90, 104
  - optimum helix angle for melt conveying 90
  - optimum screw geometry 90
  - organic acids 183
  - organo-phosphates 185, 186
  - organo-phosphite anti-oxidants 185
  - orientation 113
  - original equipment manufacturer (OEM) 89
  - orthogonal arrays 207
  - outer layer 92
  - outer region 96
  - outer vortex 206
  - output 161
  - output fluctuations 128
  - output problems 139
  - output stability 214
  - output variation 17, 139, 144
  - outside diameter 54
  - outside region of the channel 90
  - oven 129
  - overheating of the plastic 201
  - overloads 170
  - over-pressure safety device 21, 125, 170
  - over-pressure shutdown 32
  - oxygen 73, 147
  - ozone layer 183
  - ozone treatment 56
- P**
- packaging products 132
  - Paetzold 197
  - paper 57
  - paperboard 57
  - parallel screws 3
  - parison 204
  - partially filled 82, 109
  - partially intermeshing 3
  - partially streamlined dies 120
  - particle rotation 214
  - particle shape 78
  - particle shape distribution 78
  - particle size 78, 138, 157, 174
  - particle size distribution 78
  - parts 131
  - Pascal · second 67
  - passageways 133
  - P-control 27
  - PD-control 28
  - PE 200, 205
  - pellet concentrate 130
  - pelletized resins 189
  - pelletizers 60
  - pelletizing system 60
  - pellet size distribution 188
  - performance improvement 138
  - P-gels 157
  - phosphoric acid 185
  - phthalocyanines 194
  - physical characteristics 138
  - physically clean the extruder 198
  - physical properties 181, 201, 218
  - physical purging compounds 130
  - PID-control 28
  - piezo-electric transducer 21, 22
  - pigments 194
  - pin barrel extruder 100
  - pinholes 145, 146
  - pin mixers 98, 99
  - pin mixing sections 99
  - pipe 12, 114, 181
  - pipe extrusion 203
  - pipe or tubing die 110
  - pits 133
  - plain weave 10
  - planetary barrel section 105
  - planetary gear extruders 102
  - planetary gear mixers 105
  - planetary screws 105
  - plant voltage variations 20, 144
  - plasticating extruder 1, 77
  - plastic film 57
  - plastic melt 63
  - plastic properties 77
  - plastic residue 130
  - plastics extruder 1
  - plastic temperature 8, 132
  - plate die 119
  - platinum resistance element 23
  - plug 170
  - plug flow 93, 191
  - plugged filter 165
  - plugging 89, 209
  - PMEW 164
  - pneumatic pressure transducer 22
  - point-of-operation guards 134
  - Poise 67
  - polishing rolls 54
  - polyamide (nylon) 109
  - polybutadiene 66
  - polycarbonate (PC) 64, 109, 130, 198
  - polyester 64, 105, 109, 142
  - polyesters of oxiacids 184

- polyethylene 63, 64, 142, 147, 183, 185
- polyethylene-based compounds 130
- polyethylene glycol (PEG) 183
- polyethylene terephthalate (PET) 65
- polyisoprene 66
- polymer feed port 218
- polymer header system 178
- polymerization 157, 173
- polymerization reactor 157
- polymer melts 208
- polymer processing aids (PPA) 183
- polyolefins 180
- PolyOne 198
- polypropylene (PP) 64, 65, 177, 180, 181
- polystyrene (PS) 64, 76, 142, 177
- polyurethane 67, 105, 109
- polyvinylchloride (PVC) 64
- polyvinylidene fluoride 132
- Ponzielli 213
- poor melt temperature measurement 172
- poor mixing ability 97
- poor screw design 201
- portable hand tools 135
- position of the interface 190, 193
- position of the pin 204
- position of the vacuum tank 204
- post consumer reclaim (PCR) 78
- post-reactor finishing 165
- post-treatment ovens 202
- powder 156
- powder coatings 105
- powder leaks 168
- power consumption 181, 187, 209, 214
- power draw 19
- power draw from the heaters 128
- powered industrial truck operators 134
- power law approximation 70
- power law expression 70, 139
- power law fluid 70
- power law index 70, 90, 191
- power transmission capability 16
- PP 200, 205
- PPA 184, 185
- pre-compounded material 183
- pre-control method 207
- pre-drying 174, 202
- pre-dry the plastic 108
- preheating 58, 89, 202
- preheating the plastic 89, 162
- pre-heating zones 203
- preheat the plastic pellets 206
- pre-land section 117
- preparation of the machine 123
- pressure 127, 128, 132, 165
  - feedback control 31, 32
  - pulses 48
- pressure and temperature regulators 168
- pressure drop 98, 104
- pressure flow 91, 94, 229
- pressure fluctuation 144
- pressure generating capability 18, 217
- pressure gradient 93, 193
- pressure indicator 169
- pressure indicators/controllers 170
- pressure insensitive 209
- pressure relief device 132, 135
- pressure spike 11
- pressure transducer 21, 30, 132
- preventive maintenance 164, 187
- primers 56
- printing 56
- problem 163
- problem definition 163
- procedures 131, 135
- procedures for start-up 183
- process aids 199
- process capability 206
- process conditions 71
- process consistency 187
- process control 189
- process development 207
- process improvements 187
- processing aid 142, 174
- processing conditions 128, 156, 160, 161
- processing efficiency 183
- process instabilities 209
- process know-how 182
- process monitoring 20
- process optimization 50
- process shift 189
- process stability 189, 209
- process variation 206, 207
- process window 210
- product appearance 201, 214
- product change-over 183
- product design 160
- product dimensions 186, 201
- product flow 166
- productivity 181
- product lock-up zone 213
- profile dies 12, 114, 119
- profile extrusion 3
- profile extrusion lines 53, 61
- profile lines 61
- profitability 190
- profitability of an extrusion operation 177
- profitability of an extrusion plant 203
- proportional band 26
- proportional control 26
- proportional control with derivative action 28
- protective equipment 134
- protruding nails 133
- protrusions 113
- PS 200
- pseudoplastic behavior 69
- PTFE/chrome plating 85
- PTFE impregnated chrome 198

- PTFE impregnated nickel 198  
 PTFE impregnated nickel plating 85  
 PTFE (poly-tetra-fluoro-ethylene) 4  
 P/T probe 172  
 pulleys 134  
 pull rolls 55  
 Pulsar mixing section 101  
 pump seal for leaks 168  
 purchase cost 217  
 purchasing 138  
 pure drag flow 96  
 pure elongational flow 214  
 purge times 198  
 purging 129, 189, 194  
 purging agent 130, 190, 198  
 purging behavior 192  
 purging compound 190, 198  
 purging process 190  
 pushing flight flank 39  
 pushing side of the flight 91, 226  
 pushrod strain gage 22  
 pushrod transducer 21  
 PVC 73, 74, 105, 130, 200  
 PVC pipe extrusion 205  
 PVT diagram 75
- Q**
- quick-change gear provision 16  
 QuickSwitch 203
- R**
- radial bearing cap temperatures 168  
 radial screw wear 168  
 radial temperature differences 206  
 radiation heating 8  
 radiation-induced degradation 146  
 railings 133  
 ram extruder 2, 4, 68, 87, 227  
 random 3D fiber 157  
 random changes in conditions 144  
 random metal fibers 10  
 random variation 144  
 range of stable extrusion 185  
 Ranque-Hilsch vortex tube 205  
 rate-controlling part of the screw 109  
 rate of shearing 69  
 rate of temperature change 28  
 Rauwendaal 106, 209, 210, 215, 228  
 raw material cost 182  
 RCT 213, 219  
 $r_d$  96  
 reactive mixture 184  
 reactive system elastomers 66  
 readouts 137  
 recent developments 219  
 receptacle terminals 170  
 reciprocating piston 4  
 reciprocating single screw compounder 86, 227  
 recirculating flow 92  
 recycled plastics 182  
 recycling 64  
 recycling edge trim 203  
 recycling operations 213  
 redistribution 216  
 reduced extruder power consumption 185  
 reduced output 167  
 reduced scrap rates 188  
 reducing buildup 198  
 reduction in layer thickness 191  
 reduction in noise level 176  
 reduction ratio 15, 16  
 reference junction 23  
 regions of stagnation 100  
 regrind 209, 210  
 regular cyclic variation 141, 142  
 Reifenhäuser 175  
 relative humidity 20, 144, 187, 189  
 relative motion 93, 227  
 relaxation 13, 111, 113, 114  
 relaxation section 117  
 relevant distinctions 163  
 removal of the head 129  
 removal of the screw 129, 195  
 removal of volatiles 60  
 reorientation 100, 101  
 reorientation of the fluid elements 98  
 repair cost 165  
 reset capability 27  
 residence time 42, 72, 95, 96, 104, 147, 173, 176, 177, 208  
 residence time distribution 216  
 resident polymer 190, 193  
 resident resin 189  
 resident resin layer thickness 191  
 residual sludge 165  
 residual stresses 206  
 resin conveying system 200  
 resin handling system 53  
 resin supplier 157, 171  
 resistance across heaters and to "ground" 170  
 resistance temperature detector 23  
 response 23  
 response time 143  
 restriction of the screen pack 97, 161  
 restrictive sections 160  
 retarding force 90  
 ribs 113  
 rigid PVC 179  
 risers 133  
 robust extrusion process 187  
 robustness 22  
 rod 12  
 rod dies 114  
 rolling bank 110  
 rolling element bearings 165  
 roll stack 54  
 room temperature 189  
 root of the screw 90

- rotary and sliding hoppers 203
- rotary channel pump (RCP) 213
- rotary type screen changers
  - 11
- rotary union 168
- rotating disks 213
- rotation 214
- rotational speed 204
- Roussel 181, 182
- roving 218
- RTD 23
- rubber applications 100
- rubber extrusion 100
- rubber rolls 55
- run times between shutdowns
  - 182
- rupture disk 21, 32, 125, 132, 167
  
- S**
- safeguards 133
- safety 133
- safety devices 170
- safety glasses 129, 131
- safety guards 131
- safety hazards 131
- safety inspections 133
- safety signs 170
- safety stop 131
- safety warning sign 125
- sagging 111, 206
- salt 129
- sapphire window 23, 37
- saw 53, 61, 204
- sawtooth pattern 143
- Saxton mixing sections 100
- scale 47, 170
- scale deposits 165
- scale problems 168
- scale treatments 165
- scrap 183, 190, 203
- scrap rate 180, 187
- scratches 157
- scratches in die 145, 174
- scratches in screw and die 173
- screen 9, 97, 167
- screen changer 11
- screen changers with a continuous moving screen 11
- screen changes 203
- screen pack 10, 31, 97, 124, 156, 157, 171, 172
- screw 167, 171
- screw and barrel clearance 169
- screw and take-up speed
  - variation 143
- screw beat 143
- screw broken 172
- screw cooling 129, 144, 172
- screw design 161, 171, 172, 174
- screw design rules 84
- screw diameter 169
- screw drive 14
- screw extruder 2
- screw extruder (reciprocating)
  - 227
- screw frequency variations 143
- screw friction 84
- screw geometry 171, 201
- screw heating 9
- screw in a GFE 210
- screw pusher 129, 203
- screw removal 130
- screw run empty 129
- screw runout 166, 168
- screw-seat pocket 169
- screw speed 14, 19, 42, 128, 156, 162, 187
- screw speed control 124
- screw speed variation 141
- screw temperature 156
- screw turning the wrong way
  - 171
- screw velocity 225
- scrubbing action 182, 195
- sealing surface 129, 130
- seals 167
- SEC 29, 161
- secondary extruder 216
- second stage 156
- second stage of the screw 109
- segregation 189
- segregation of ingredients 171
- self-lubricating material 184
- self-tuning 28
- semi-continuous screen
  - changers 11
- semi-crystalline 160, 200
- semi-crystalline plastic 64, 70, 72, 76, 112, 124, 172, 200
- Semmeerot 99
- sensors 137
- sequence of the addition of
  - ingredients 162
- servo drives 15
- setpoint 26, 124
- set-up sheet 123
- Shainin 207
- Shainin method of process
  - analysis 207
- shallow flighted screw 160
- shank 130
- shape factor for drag flow 229
- shape factor for pressure flow
  - 229
- shaping 77
- shaping of the molten plastic
  - 110
- sharkskin 184
- shear deformation 96
- shear flow 69, 215
- shear pin 21, 125, 132, 167
- shear rate 69, 93
- shear strain 93
- shear stress 174, 184, 193
- shear thinning 69, 90, 184
- shear thinning or pseudoplastic
  - 69
- sheet 12, 181
- sheet dies 117
- sheet extrusion 181
- Shewhart 207
- short barrier section 214
- short residence times 178
- short-term annealing process
  - 149
- short-term melt temperature
  - variations 42

- short-term pressure variations 32
- short-term variation 143
- shrinkage 206
- shrink void formation 147
- shrink voids 112, 147
- Shuman Plastics 198
- shutdown 123, 129, 183
- signs of wear problems 161
- signs warning of clearance limits 134
- Sikora 210
- silicone 183
- silicone elastomers 67
- simple proportional control 27
- simulation software 149
- single flighted geometry 84
- single layer 204
- single screw compounding extruder (SSCE) 217
- single screw extruder (SSE) 2, 86, 140, 175, 216, 219, 225–228
- single screw extrusion 175
- sintered metal 157
- sintered metal powder 10
- size and shape changes 111
- sizer 53
- size reduction 112
- sizing device 53
- skylights 133
- slanted pushing flight flanks 213
- slide valve 171
- slippage 15
- slit dies 12, 114
- slope of the velocity profile 94
- slots 106
- slotted flight mixers 98, 100
- slotted screw flights 215
- slow variation 141
- sludge 169
- smooth bore extruders 84
- snail's cage 60
- solenoid problems 168
- solenoids 167
- solid bed 35, 85, 88, 226
- solid bed breakup 144, 209
- solid bed velocity 225
- solid material 226
- solid plug 226
- solids channel 89
- solids conveying 77, 78, 88, 225
- solids conveying angle 225
- solids conveying characteristics 210
- solids conveying problem 140
- solids conveying rate 225, 226
- solids conveying zone 77
- solid skin 148
- solvent 129, 135
- sources of heat 87
- spare parts 167
- sparking 168
- SPC 207
- special causes of variation 206
- special extruder 171
- special instructions 124
- special purpose extinguishers 134
- specification limits 206
- specifications on pellet size 171
- specific energy 73, 180, 200
- specific energy consumption (SEC) 29, 161, 177, 181, 200
- specific energy requirement 181
- specific heat 71, 72, 138, 180
- specific volume 75
- speed reducer 14, 16
- speed regulation 14
- spider legs 13, 115
- spider supports 145
- spinneret 179
- spinning parts 134
- spiral mandrel die 116, 117
- splitting 98, 100
- spur gears 16
- square feed hopper 79
- square flow channel 111
- SSCE 217
- stability of the extrusion process 188
- stabilizer level 138
- stacked materials 134
- staged cooling 148
- stagnant film 106
- stagnating regions 157
- stainless steel 185
- stairways 133
- standard extruder 177
- standard low frequency spectrum analysis 166
- starting the extruder 126
- start-up 123, 183
- startup and shutdown procedures 173
- starve feeding 82, 127, 156, 188, 210
- starve feeding rate 127
- static electrical charge 183
- static electricity 132
- static eliminators 132
- static mixing devices 208
- static purge 196
- static purging methods 195
- statistical process control (SPC) 138, 206
- statistical tools 207
- stearic acid 182
- steel particles 165
- Steer Engineering 181
- stick of butter 87
- stick-slip 184
- stick-slip melt fracture 184
- sticky film 167
- stirrer 7, 79
- stirrer in feed hopper 171
- stock temperature 147, 173, 174
- storage bins 173
- straight conveying screws 97
- strain gage capillary pressure 31
- strain gage transducer 21
- strand pelletizers 60
- straps 170
- Strata-Blend mixing section 101
- streamers 157
- streamlined flow 98, 199
- streamlining 99, 142
- streamlining of the die 174

- Street 103
  - stresses in the melt 214
  - stringing aid 126
  - strobe light 143
  - strong elongational flow 213
  - stud-mounted 166
  - substrate 57
  - suction bell 204
  - Sulzer Chemtech 182
  - sump 169
  - Sun Plastech 198
  - super extrusion 142, 174
  - support legs 13
  - surface friction 85
  - surface quality 85
  - surface stretching flow 142
  - surface treated 58
  - surface treatment 85
  - surface treatment unit 55, 56
  - surging 89
  - Surlyn 196
  - swelling 13, 111
  - swelling of the extrudate 111
  - swirl chamber 205
  - switching a fan on 189
  - S-wrap 55
  - synergistic effect 183
  - synthetic pigments 194
  - systematic problem solving 163
  - system completely empty 129
  - system left full 129
- T**
- tachometer feedback 14
  - Tadmor melting model 86, 226, 227
  - Taguchi 207
  - take-up 111, 200
  - take-up device 53
  - take-up speed 111, 124, 128
  - take-up speed variation 141
  - take-up tension 143
  - talca 181
  - tandem foam extrusion lines 216
  - tangential counter-rotating screws 3
  - tangential feed opening 81
  - tanks 133
  - tapered slots 213
  - T-die 118
  - teamwork 137, 138
  - technical expertise 182
  - Tecnoflon from Solvay Solexis 183
  - temperature 36, 111
  - temperature at motor housing 168
  - temperature buildup 98, 209
  - temperature coefficient 70
  - temperature control 26, 124, 144
  - temperature control system 171, 172
  - temperature distribution 91
  - temperature distribution in the screw channel 90
  - temperature-induced dimensional changes 50
  - temperature measurement 171
  - temperature of feed section casting 168
  - temperature of feed stock 187, 202
  - temperature of the plastic entering the extruder 202
  - temperature sensitivity 22
  - temperature sensor 160, 170
  - temperatures of blower motors 168
  - temperatures of motor bearing caps 168
  - temperatures of the cooling sections 124
  - temperature variation 144
  - tendency to adhere to metal surfaces 198
  - tensile strength 160
  - tension 111
  - terminals inside motor conduit box 169
  - textured surface 55
  - TGA (thermogravimetric analyzer) 74
  - thermal conductivity 71, 138, 181, 208, 227
  - thermal degradation 146
  - thermal homogeneity 92, 208
  - thermally homogeneous melt 92
  - thermally insulated 23
  - thermally sensitive materials 36, 99
  - thermally sensitive polymers 179
  - thermal properties 71, 138
  - thermal stability 71, 73, 129, 176
  - thermal stabilizer 74, 147
  - thermocouple 22
    - mesh 39
  - thermoforming 181
  - thermo-oxidative degradation 147
  - thermoplastic elastomers 66
  - thermoplastics 63
  - thermosets 63
  - thickness-gauging system 55
  - thickness variation 174
  - thick-walled pipe 201
  - thick-walled products 181, 185
  - three-dimensional molecular network 64
  - three-dimensional network of crosslinks 66
  - throttle ratio 96
  - throughput 174
  - throughput rates 202
  - thrust bearing assembly 16
  - thrust bearing failure 165
  - thrust bearings 16
  - thrust force 16
  - thrust housing 165, 166
  - thrust housing temperature 168
  - thrust pocket 167
  - thrust shaft bearings 165



- thrust shaft radial bearings 165  
tightness of fuse clips 170  
time proportioning temperature control 144  
tip 13  
tips to reduce energy use 202  
titanium dioxide (TiO<sub>2</sub>) 194  
titanium nitride 85, 198  
TMA (thermomechanical analyzer) 74  
toilets 134  
torpedo 13, 115  
torque balance 225  
torsional load 84  
total line control 128, 186  
total runout (TIR) 166  
total shear deformation 93  
total shear strain 93  
toxic 183  
toxic materials 134  
toxic substances 186  
trailing flank 39  
trailing side of the flight 91, 226  
training 44, 133  
training program 133  
transfer lines 201, 202  
transparent window 36  
trending capability 128  
Trexel 182  
troubleshooting 137  
troubleshooting output variation (surging) 171  
T-shaped manifold 118  
tubing 12, 114  
tubing and pipe extrusion lines 53  
tune temperature control system 171  
tungsten disulfide (WS<sub>2</sub>, Dicronite) 85, 198  
tuning a PID controller 28  
Twente Mixing Ring (TMR) 99  
Twente University 99  
twin screw compounding extruder (TSCE) 217  
twin screw extruder (TSE) 2, 86, 175, 216, 218, 228  
twin screw stuffer 60  
twisting 167  
two-stage screw 5, 109
- U**
- ultra high molecular weight (UHMW) polyethylene 4  
ultramarine 194  
ultrasonic sensors 54  
ultrasonic wall thickness gage 54  
ultrasound 116  
unbalanced shafts 143  
understanding of the extrusion process 137  
underwater pelletizers 60  
undispersed agglomerates 158  
uniformity of feed stock 189  
uniform velocity 13  
Union Carbide mixer (UC mixer) 103  
unmelted material 89, 209  
unrolled screw channel 95  
unstable flow in feed hopper 171  
unusual bearing and gear noises 168  
unusual noises 161, 165, 173  
upper critical shear rate 142  
upper portion of the channel 95  
upstack operation 55  
up-time 198
- V**
- vacuum 204  
vacuum feed hopper system 157, 174  
vacuum in the suction bell 204  
vacuum level 20, 174  
vacuum level at vent port 187  
vacuum pump 60  
vacuum pyrolysis 129  
variability 182  
variability in the extrusion process 182  
variable channel depth mixers 98, 101  
variable channel width mixers 98  
variable feed stock 188  
variable frequency AC vector drives 15  
variable speed controllers 202  
variation in extruder output 89  
variation inherent to the process 206  
variation of the frequency of screw rotation 141, 143  
variations in feed material 188  
variations in melt temperature 97  
variations in the extrusion process 188  
varying levels of regrind 188  
velocities in the down-channel direction 93  
velocity gradient 94  
velocity in the cross-channel direction 93  
velocity of the plastic at the die exit 111  
velocity profile 190  
vented extruder 123, 157, 174, 210  
vent flow 109, 156  
ventilation 135  
ventilation fan 170, 202  
ventilation input 170  
venting 174  
venting efficiency 174  
vent opening 5  
vent port 60, 108, 125  
vent port design 174  
very high molecular weight (VHMW) polymers 83, 209  
very low density foamed materials 182  
very low screw speed 147



very slow variation 141, 144  
VHMW polymers 209  
vibrating pads 7, 79, 171  
vibration 141, 143, 167  
vibration monitoring 165  
vibration monitoring equipment 143  
vibration monitoring system 166  
VIP 217  
VIP mixer 215  
VIP NRV 215  
virgin polymers 182  
visco-elastic 111  
viscosity 67, 227  
viscosity differences 193  
viscous dissipation 214  
viscous drag 90  
viscous force at the barrel 90  
viscous force at the screw 90  
viscous heat generation 71, 92  
viscous heat generation in the plastic 147  
viscous heating 87  
viscous materials 111  
vital signs 29, 187  
Viton from DuPont 183  
voids 147, 174  
volatiles 77, 147, 174  
vortex intermeshing pin (VIP) mixer 215  
vortex tubes 205  
V-shaped tooth design 16  
vulcanization 66

**W**

wall openings 133  
wall shear stress 142  
wall thickness 54, 116, 204  
warning signs 131, 134  
warp 113  
warpage 114  
warping 113  
wasted energy 200  
wasted resin 183  
water cooling 6, 8, 200  
water flow 168  
water inlet temperature 187  
water leaks 132  
water outlet temperature 187  
water ring pelletizers 60  
water side of oil heat exchanger 169  
water slurry 60  
water softener 47  
water spills 132  
water-to-oil cooled systems 165  
water-to-water heat exchanger 170  
waviness 43  
wear 84, 139, 218  
wear problems 161, 173  
wear rate 173  
wear resistance 162  
wear-resistant layers 162  
wear-resistant material 84  
wear-resistant screw and barrel material 173

wedge shape 106, 107  
wedge-shaped region 214  
weights 131, 132  
weld lines 117, 145, 174  
well designed extruder screw 201  
wetting of the fiber 218  
winder 54, 55  
winding 169  
Windmoeller & Hoelscher 203  
window to the process 19, 137  
wipers 7  
wipe the barrel surface 98  
wiping flights 106  
wiping segments 107  
wire coating 12, 114  
wire coating operations 142  
wire mesh screens 10  
wiring 132, 170  
worn screw 87  
worn screws and barrels 167  
Wortberg 194, 210  
written procedures 131

**Y**

Y-block 178

**Z**

Zorro mixing section 104