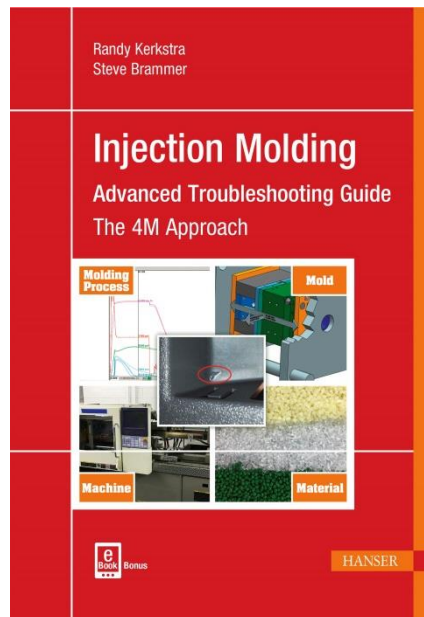


HANSER



Sample Pages

Injection Molding Advanced Troubleshooting Guide

Randy Kerkstra
Steve Brammer

ISBN (Book): 978-1-56990-645-3

ISBN (E-Book): 978-1-56990-646-0

For further information and order see

www.hanserpublications.com (in the Americas)

www.hanser-fachbuch.de (outside the Americas)

© Carl Hanser Verlag, München

Contents

Preface	V
About the Authors	VII
1 Troubleshooting Methodology	1
1.1 Troubleshooting	1
1.2 What Makes an Effective Troubleshooter?	1
1.3 What Makes an Ineffective Troubleshooter?	3
1.4 Troubleshooting Methodology	3
1.4.1 STOP: Systematically	4
1.4.2 STOP: Think	6
1.4.3 STOP: Observe	7
1.4.4 STOP: Proceed	10
1.4.5 STOP: Troubleshooting Cycle	12
1.4.6 Hard Fix versus Processing around Problem	13
1.4.7 Troubleshooting Tools	13
1.4.8 Troubleshooting Methodology Summary	18
2 Troubleshooting Tool Kit	21
2.1 Lockout/Tagout	21
2.2 Hand Tools	21
2.3 Pyrometer	22
2.4 Spotting Blue	22
2.5 Measurement Tools	22
2.6 Multimeter	22
2.7 Process Monitoring Equipment	23
2.8 Moisture Analyzer	23

2.9	Dew Point Meter	23
2.10	Flashlight	24
2.11	Microscope/Magnifying Glass	24
2.12	Silly Putty	24
2.13	Inspection Mirror	24
2.14	Thermal Imaging Camera	25
2.15	Aluminum Tape	25
2.16	Dial Indicator	25
2.17	Purging Compound	25
2.18	Grinder/Stones	26
2.19	Camera	26
2.20	Material Data	26
2.21	Scale	26
2.22	Flow Meter	27
2.23	Mold Cleaning Supplies	27
2.24	Miscellaneous Supplies	27
3	Decoupled® or Scientific Molding	29
4	Gating Details	33
4.1	Gating	33
4.2	Gate Size, Shape, and Taper	35
4.3	Mental Picture Volume versus Pressure	40
5	Mold Hydraulics	41
5.1	Hydraulic Uses	41
5.2	Set and Pull Pressure	41
5.3	Cylinder Sizing	42
5.4	Hydraulic Cores or Slides	44
5.5	Multiple Sequences	44
5.6	Mounting	45
5.7	Switches	45

6	Mold Texture and Polish	47
6.1	Mold Texture	47
6.2	Mold Polish	50
7	Venting	53
7.1	Venting Basics	53
7.2	Alternate Venting	58
7.3	Venting Conclusion	60
8	Machine Performance	61
8.1	Load Sensitivity	63
8.2	Dynamic Check Valve Study	64
8.3	Velocity Linearity	65
8.4	10-Cycle Overlay	68
8.5	Cycle Variation	70
8.6	Velocity to Pressure Transfer	72
8.6.1	Machine Control	75
8.7	Machine Documentation	78
9	Drying	81
9.1	Introduction	81
9.2	Keys to Drying	81
9.2.1	Temperature	83
9.2.2	Dry Air	83
9.2.3	Air Flow	85
9.2.4	Time	85
9.3	Moisture Analysis	86
9.4	Material Handling	88
9.5	Material Concerns	90
10	Purging	91
10.1	Purging Impact	91
10.2	Purging Method Example	92
10.3	Purging Compounds	93

11 Hot Runners	95
11.1 Hot Runner Advantages	95
11.2 Heaters and Thermocouples	95
11.3 Hang Up Areas	96
11.4 Hot Drop Tips	96
11.5 Drooling, Stringing, and Sprue Sticking	97
11.6 Freeze Off	97
11.7 Orifice Size	97
11.8 Leakage	98
11.9 Zones and Wiring	99
11.10 Hot Runner Troubleshooting	99
12 Cavity Balance	101
12.1 Flow Length	103
12.2 Flow Diameter	103
12.3 Shear	103
12.4 Cooling	105
12.5 Venting	106
12.6 Clamp Pressure	106
12.7 Cavity Fill Balance Study	107
12.8 Artificial Balance	108
12.8.1 Family Molds	109
13 Cavity Instrumentation	111
13.1 Cavity Pressure Technology	111
13.2 Cavity Thermocouples	118
13.3 Process Documentation	121
13.4 Process Control	122
13.5 Additional Monitoring Options	123
14 Mold Cooling	125
14.1 Mold Cooling Importance	125
14.2 Water Flow	126
14.3 Documentation	127

14.4	Tooling Techniques	128
14.5	Other Cooling Concerns	130
15	Black or Brown Specks	131
15.1	Description	131
15.2	Black Specks Troubleshooting Chart	132
15.3	Black Specks Troubleshooting	132
15.3.1	Black Specks Troubleshooting Molding Process Issues	132
15.3.2	Black Specks Troubleshooting Mold Issues	133
15.3.3	Black Specks Troubleshooting Machine Issues	135
15.3.4	Black Specks Troubleshooting Material Issues	137
16	Blush	141
16.1	Description	141
16.2	Blush Troubleshooting Chart	142
16.3	Blush Troubleshooting	142
16.3.1	Blush Troubleshooting Molding Process Issues	142
16.3.2	Blush Troubleshooting Tooling Issues	145
16.3.3	Blush Troubleshooting Machine Issues	148
16.3.4	Blush Troubleshooting Material Issues	149
17	Brown Streaks	151
17.1	Description	151
17.2	Brown Streak Troubleshooting Chart	152
17.3	Brown Streak Troubleshooting	152
17.3.1	Brown Streak Troubleshooting Molding Process Issues	152
17.3.2	Brown Streak Troubleshooting Mold Issues	156
17.3.3	Brown Streak Troubleshooting Machine Issues	159
17.3.4	Brown Streak Troubleshooting Material Issues	162
18	Bubbles	165
18.1	Description	165
18.2	Bubbles Troubleshooting Chart	166
18.3	Bubbles Troubleshooting	166
18.3.1	Bubbles Troubleshooting Molding Process Issues	167
18.3.2	Bubbles Troubleshooting Mold Issues	168
18.3.3	Bubbles Troubleshooting Machine Issues	170
18.3.4	Bubbles Troubleshooting Material Issues	171

19	Buildup	173
19.1	Description	173
19.2	Buildup Troubleshooting Chart	174
19.3	Buildup Troubleshooting	174
19.3.1	Buildup Troubleshooting Molding Process Issues	174
19.3.2	Buildup Troubleshooting Mold Issues	175
19.3.3	Buildup Troubleshooting Machine Issues	177
19.3.4	Buildup Troubleshooting Material Issues	177
20	Burns	181
20.1	Description	181
20.2	Burns Troubleshooting Chart	182
20.3	Burns Troubleshooting	182
20.3.1	Burns Troubleshooting Molding Process Issues	182
20.3.2	Burns Troubleshooting Mold Issues	184
20.3.3	Burns Troubleshooting Machine Issues	186
20.3.4	Burns Troubleshooting Material Issues	189
21	Cloudiness	191
21.1	Description	191
21.2	Cloudiness Troubleshooting Chart	192
21.3	Cloudiness Troubleshooting	192
21.3.1	Cloudiness Troubleshooting Molding Process Issues	192
21.3.2	Cloudiness Troubleshooting Mold Issues	194
21.3.3	Cloudiness Troubleshooting Machine Issues	195
21.3.4	Cloudiness Troubleshooting Material Issues	196
22	Color Swirls	199
22.1	Description	199
22.2	Color Swirls Troubleshooting Chart	200
22.3	Color Swirls Troubleshooting	200
22.3.1	Color Swirls Troubleshooting Molding Process Issues	200
22.3.2	Color Swirls Troubleshooting Mold Issues	202
22.3.3	Color Swirls Troubleshooting Machine Issues	202
22.3.4	Color Swirls Troubleshooting Material Issues	204
23	Contamination	209
23.1	Description	209

23.2	Contamination Troubleshooting Chart	210
23.3	Contamination Troubleshooting	210
23.3.1	Contamination Troubleshooting Molding Process Issues	210
23.3.2	Contamination Troubleshooting Mold Issues	212
23.3.3	Contamination Troubleshooting Machine Issues	215
23.3.4	Contamination Troubleshooting Material Issues	217
24	Cracking	223
24.1	Description	223
24.2	Cracking Troubleshooting Chart	224
24.3	Cracking Troubleshooting	224
24.3.1	Cracking Troubleshooting Molding Process Issues	224
24.3.2	Cracking Troubleshooting Mold Issues	228
24.3.3	Cracking Troubleshooting Machine Issues	229
24.3.4	Cracking Troubleshooting Material Issues	230
25	Delamination	233
25.1	Description	233
25.2	Delamination Troubleshooting Chart	234
25.3	Delamination Troubleshooting	234
25.3.1	Delamination Troubleshooting Molding Process Issues	234
25.3.2	Delamination Troubleshooting Mold Issues	235
25.3.3	Delamination Troubleshooting Machine Issues	236
25.3.4	Delamination Troubleshooting Material Issues	237
26	Dimensions	239
26.1	Description	239
26.2	Dimensions Troubleshooting Chart	239
26.3	Dimensions Troubleshooting	240
26.3.1	Dimensions Troubleshooting Molding Process Issues	240
26.3.2	Dimensions Troubleshooting Mold Issues	245
26.3.3	Dimensions Troubleshooting Machine Issues	247
26.3.4	Dimensions Troubleshooting Material Issues	251
27	Excessive Cycle Time	255
27.1	Description	255
27.2	Excessive Cycle Time Troubleshooting Chart	255
27.3	Excessive Cycle Time Troubleshooting	256

27.3.1	Excessive Cycle Time Troubleshooting Molding Process Issues	256
27.3.2	Excessive Cycle Time Troubleshooting Mold Issues	259
27.3.3	Excessive Cycle Time Troubleshooting Machine Issues	262
27.3.4	Excessive Cycle Time Troubleshooting Material Issues	263
28	High Fill Pressure	265
28.1	Description	265
28.2	High Fill Pressure Troubleshooting Chart	265
28.3	High Fill Pressure Troubleshooting	266
28.3.1	High Fill Pressure Troubleshooting Molding Process Issues	266
28.3.2	High Fill Pressure Troubleshooting Mold Issues	267
28.3.3	High Fill Pressure Troubleshooting Machine Issues	269
28.3.4	High Fill Pressure Troubleshooting Material Issues	274
29	Flaking	277
29.1	Description	277
29.2	Flaking Troubleshooting Chart	278
29.3	Flaking Troubleshooting	278
29.3.1	Flaking Troubleshooting Molding Process Issues	278
29.3.2	Flaking Troubleshooting Mold Issues	278
29.3.3	Flaking Troubleshooting Machine Issues	280
29.3.4	Flaking Troubleshooting Material Issues	280
30	Flash	281
30.1	Description	281
30.2	Flash Troubleshooting Chart	282
30.3	Flash Troubleshooting	282
30.3.1	Flash Troubleshooting Molding Process Issues	283
30.3.2	Flash Troubleshooting Mold Issues	287
30.3.3	Flash Troubleshooting Machine Issues	292
30.3.4	Flash Troubleshooting Material Issues	296
31	Flow Lines	299
31.1	Description	299
31.2	Flow Lines Troubleshooting Chart	299
31.3	Flow Lines Troubleshooting	300
31.3.1	Flow Lines Troubleshooting Molding Process Issues	300

31.3.2	Flow Lines Troubleshooting Mold Issues	302
31.3.3	Flow Lines Troubleshooting Machine Issues	304
31.3.4	Flow Lines Troubleshooting Material Issues	306
32	Glass Fibers on Surface	309
32.1	Description	309
32.2	Glass Fibers on Surface Troubleshooting Chart	310
32.3	Glass Fibers on Surface Troubleshooting	310
32.3.1	Glass Fibers on Surface Troubleshooting Molding Process Issues	310
32.3.2	Glass Fibers on Surface Troubleshooting Mold Issues	312
32.3.3	Glass Fibers on Surface Troubleshooting Machine Issues	314
32.3.4	Glass Fibers on Surface Troubleshooting Material Issues	315
33	Gloss Variation	319
33.1	Description	319
33.2	Gloss Variation Troubleshooting Chart	320
33.3	Gloss Variation Troubleshooting	320
33.3.1	Gloss Variation Troubleshooting Molding Process Issues	320
33.3.2	Gloss Variation Troubleshooting Mold Issues	324
33.3.3	Gloss Variation Troubleshooting Machine Issues	327
33.3.4	Gloss Variation Troubleshooting Material Issues	327
34	Jetting	331
34.1	Description	331
34.2	Jetting Troubleshooting Chart	332
34.3	Jetting Troubleshooting	332
34.3.1	Jetting Troubleshooting Molding Process Issues	333
34.3.2	Jetting Troubleshooting Mold Issues	334
34.3.3	Jetting Troubleshooting Machine Issues	336
34.3.4	Jetting Troubleshooting Material Issues	336
35	Part Sticking on Cover	337
35.1	Description	337
35.2	Part Sticking on Cover Troubleshooting Chart	337
35.3	Part Sticking on Cover Troubleshooting	338
35.3.1	Part Sticking on Cover Troubleshooting Molding Process Issues	338

35.3.2	Part Sticking on Cover Troubleshooting Mold Issues	339
35.3.3	Part Sticking on Cover Troubleshooting Machine Issues	342
35.3.4	Part Sticking on Cover Troubleshooting Material Issues	343
36	Part Sticking on Ejector	345
36.1	Description	345
36.2	Part Sticking on Ejector Troubleshooting Chart	346
36.3	Part Sticking on Ejector Troubleshooting	346
36.3.1	Part Sticking on Ejector Molding Process Issues	346
36.3.2	Part Sticking on Ejector Troubleshooting Mold Issues	349
36.3.3	Part Sticking on Ejector Troubleshooting Machine Issues	351
36.3.4	Part Sticking on Ejector Troubleshooting Material Issues	352
37	Pin Push	355
37.1	Description	355
37.2	Pin Push Troubleshooting Chart	356
37.3	Pin Push Troubleshooting	356
37.3.1	Pin Push Troubleshooting Mold Process Issues	356
37.3.2	Pin Push Troubleshooting Mold Issues	358
37.3.3	Pin Push Troubleshooting Machine Issues	360
37.3.4	Pin Push Troubleshooting Material Issues	361
38	Read-through	363
38.1	Description	363
38.2	Read-through Troubleshooting Chart	364
38.3	Read-through Troubleshooting	364
38.3.1	Read-through Troubleshooting Molding Process Issues	364
38.3.2	Read-through Troubleshooting Mold Issues	365
38.3.3	Read-through Troubleshooting Machine Issues	367
38.3.4	Read-through Troubleshooting Material Issues	367
39	Scuffs and Scratches	369
39.1	Description	369
39.2	Scuffs and Scratches Troubleshooting Chart	370
39.3	Scuffs and Scratches Troubleshooting	370
39.3.1	Scuffs and Scratches Troubleshooting Molding Process Issues	370
39.3.2	Scuffs and Scratches Troubleshooting Mold Issues	373

39.3.3	Scuffs and Scratches Troubleshooting Machine Issues	375
39.3.4	Scuffs and Scratches Troubleshooting Material Issues	375
40	Short Shot	377
40.1	Description	377
40.2	Short Shot Troubleshooting Chart	378
40.3	Short Shot Troubleshooting	378
40.3.1	Short Shot Troubleshooting Molding Process Issues	378
40.3.2	Short Shot Troubleshooting Mold Issues	385
40.3.3	Short Shot Troubleshooting Machine Issues	389
40.3.4	Short Shot Troubleshooting Material Issues	393
41	Sink	397
41.1	Description	397
41.2	Sink Troubleshooting Chart	398
41.3	Sink Troubleshooting	398
41.3.1	Sink Troubleshooting Molding Process Issues	398
41.3.2	Sink Troubleshooting Mold Issues	404
41.3.3	Sink Troubleshooting Machine Issues	408
41.3.4	Sink Troubleshooting Material Issues	411
42	Splay	413
42.1	Description	413
42.2	Splay Troubleshooting Chart	414
42.3	Splay Troubleshooting	414
42.3.1	Splay Troubleshooting Molding Process Related Issues	415
42.3.2	Splay Troubleshooting Mold Issues	420
42.3.3	Machine Issues	425
42.3.4	Material Issues	427
43	Sprue Sticking	431
43.1	Description	431
43.2	Sprue Sticking Troubleshooting Chart	432
43.3	Sprue Sticking Troubleshooting	432
43.3.1	Sprue Sticking Troubleshooting Molding Process Issues	432
43.3.2	Sprue Sticking Troubleshooting Mold Issues	435
43.3.3	Sprue Sticking Troubleshooting Machine Issues	439
43.3.4	Sprue Sticking Troubleshooting Material Issues	441

44	Stringers	443
44.1	Description	443
44.2	Stringers Troubleshooting Chart	444
44.3	Stringers Troubleshooting	444
44.3.1	Stringers Troubleshooting Molding Process Issues	444
44.3.2	Stringers Troubleshooting Mold Issues	446
44.3.3	Stringers Troubleshooting Machine Issues	448
44.3.4	Stringers Troubleshooting Material Issues	450
45	Voids	451
45.1	Description	451
45.2	Voids Troubleshooting Chart	452
45.3	Voids Troubleshooting	452
45.3.1	Voids Troubleshooting Molding Process Issues	452
45.3.2	Voids Troubleshooting Mold Issues	454
45.3.3	Voids Troubleshooting Machine Issues	456
45.3.4	Voids Troubleshooting Material Issues	456
46	Warp	457
46.1	Description	457
46.2	Warp Troubleshooting Chart	457
46.3	Warp Troubleshooting	458
46.3.1	Warp Troubleshooting Molding Process Issues	459
46.3.2	Warp Troubleshooting Mold Issues	465
46.3.3	Warp Troubleshooting Machine Issues	467
46.3.4	Warp Troubleshooting Material Issues	468
47	Weld Lines	471
47.1	Description	471
47.2	Weld Lines Troubleshooting Chart	472
47.3	Weld Lines Troubleshooting	472
47.3.1	Weld Lines Troubleshooting Molding Process Issues	473
47.3.2	Weld Lines Troubleshooting Mold Issues	475
47.3.3	Weld Lines Troubleshooting Machine Issues	477
47.3.4	Weld Lines Troubleshooting Material Issues	478
Index	481

Preface

Why a book dedicated to troubleshooting? The answer to that lies in frustrations that the authors have experienced over the years in launching and maintaining injection molds and processes for those molds. Have you ever experienced any of the following?

- High scrap rates
- Excess down time
- Slow cycle times
- Customer rejections (both internal and external)
- Processing around tooling issues
- Damage to molds
- Defects that seem to show up out of nowhere
- Defects that keep reoccurring
- “Fixed” problems that keep coming back
- Molds that run fine in one machine but not in another

The goal of this book is to help provide tools and information that will help truly address these types of concerns.

Often times in the plastics industry there is a great deal of learning through the “school of hard knocks” and both of the authors have had the opportunity to learn a lot this way. What the industry has not done well is passing along these lessons to others. We have reached a point where we are interested in passing along the lessons we have learned through experience in the trenches.

One thing that the authors have noticed in the industry is a disconnect between processing and tooling. We come at troubleshooting with different backgrounds, one in tooling and one in materials and processing. However, we both approach a problem with the same thought process. We felt it was time to provide a resource that dives deep into the interaction of tooling, processing, and materials and have sought to create that in this work. There would not be a value in this book if it was just regurgitation of the same information that has been documented in

“troubleshooting guides” over the years. The strength of this book lies in combining hands-on experience of making molds and processes run successfully even and especially when the “by-the-books” approach did not resolve the problem.

This book is broken down into specific sections:

1. Troubleshooting methodology and tools (Chapters 1 and 2)
2. Focused discussion of key areas impacting troubleshooting including the mold, machine, material, and molding process (Chapters 3–14)
3. In-depth alphabetical troubleshooting guide for various defects (Chapters 15–47)

Again the key differences in this troubleshooting guide come down to the efforts to bridge the gaps between tooling, processing, and materials and provide in-depth feedback from designing, building, processing, maintaining, and troubleshooting 1000s of molds over the last 25+ years.

Writing this book was a humbling experience. We obviously have not seen every mold, material, and machine combination and could come up with “what if?” cases forever, but we feel this book well represents our experience. We believe that keeping an open mind to solutions is critical to successful troubleshooting. We would never believe that we have all the answers. Remember there is always more to learn!

Many of the fundamental processing and design methods that are the industry standards have come from the development and training efforts of many individuals including Rod Groleau, John Bozzelli, Don Paulson, Glenn Beall, and John Beaumont. Steve was fortunate to have Richard Brammer, a mold maker, development engineer, and Ferris State University Instructor as a father who provided guiding influence along the “plastics road”. Steve is also thankful for the Plastics Engineering Instructors at Ferris State University and Grand Rapids Community College. The above people have been educating the plastics industry for many years and through their writing and instruction the industry has learned and improved. We have also had the opportunity to work with many excellent processors, maintenance people, mold builders, designers, and material scientists who have added to our learning over our careers. We would also like to thank Mark Smith and the team at Hanser Publishers for helping bring this book to reality.

As you move down the troubleshooting road keep learning, always ask why, never assume, and stay open minded!

Randy Kerkstra

Steve Brammer

About the Authors

Randy Kerkstra has worked in the plastics industry for over 29 years, with specialism in troubleshooting injection molding. He also has much experience with injection molds, with 14 years in the tool shop environment as a mold maker/designer and over 15 maintaining and repairing/troubleshooting thousands of molds in the production environment. He has years of research with gate geometry, runner/sprue waste, and reducing part defects with a focus on the mold and how it impacts these issues. He also co-owns KB Molding Solutions, a training and consulting company. He currently works in sales and product development for PCS Company.



Steve Brammer has held a variety of positions for multiple custom and captive molders working in the furniture, appliance, automotive, and consumer products markets. He is currently Molding Technical Manager for a Tier One automotive component supplier. Steve is also an Instructor at Grand Rapids Community College, teaching courses in applied injection molding, plastics processing, and manufacturing. He also co-owns KB Molding Solutions, a training and consulting company. Steve has a Bachelor of Science degree in Plastics Engineering Technology from Ferris State University.



1

Troubleshooting Methodology

■ 1.1 Troubleshooting

Troubleshooting is problem solving. Molding troubleshooters are called upon to resolve problems with the part, mold, machine, or process. There are many problems encountered in injection molding including these general categories:

- Cosmetic defects
- Dimensional problems
- Part breakage
- Long cycle times
- High scrap rate

All of the above lead to increased cost to manufacture a molded part, which often makes the difference between profit and loss. A molding operation that is consistently running high scrap or long cycles is going to struggle to succeed.

■ 1.2 What Makes an Effective Troubleshooter?

The role of a troubleshooter is to find the root cause of a problem and do what is necessary to resolve the problem. Effective troubleshooters will look beyond their initial impressions and ensure that the true root cause has been addressed. Good troubleshooters take a great deal of pride in having the perseverance to solve a problem and ensure that it does not reoccur.

The Merriam-Webster dictionary defines a troubleshooter as:

A skilled worker employed to locate trouble and make repairs in machinery and technical equipment.

A person skilled at solving or anticipating problems or difficulties.

Troubleshooting is a skill that can be learned and this book is intended to help convey some of the knowledge that the authors have learned through many years of troubleshooting. Some of the key things that will help anyone improve at troubleshooting include:

- Willingness to listen to others. Anyone can provide the crucial piece of information that helps solve a problem. A good troubleshooter will listen to people.
- Being observant. A good troubleshooter will always be looking for what might have changed. Good observation skills are critical to troubleshooting. Good troubleshooters live by the motto “show me” rather than trusting that things have been set up correctly. Anyone who has spent time troubleshooting will tell you that there are plenty of cases where they were told that the material was dry or the mold was clean but verification showed otherwise.
- Willingness to learn. Many times when working on a problem a troubleshooter will have to dig deep into a subject to learn what the root cause really is. Be open to learning and use all resources available to become better at troubleshooting. There is always more to learn.
- Perseverance. This is critical to being a good troubleshooter. There are many times when standing at a molding machine for hours gets very tiring. A good troubleshooter is willing to put the time and effort in to ensure the problem is corrected. This also means that they will check back on the problem to ensure that it is corrected.
- Willingness to try things. If a troubleshooter is afraid to try something out of fear of a negative result they will struggle to reach the solution of the problem. A perfect example is a processor who is afraid to open up vents on a mold because of flash. If you do not try to fix the problem it will not be resolved.
- Taking a systematic approach. A good troubleshooter works through a problem using a systematic methodology. Change one thing at a time in an organized fashion and give the change a chance to stabilize.
- Being data driven. Good troubleshooters utilize data to make decisions, and do not rely on assumptions or opinions. If a change is made the data should provide feedback on the whether or not there was an improvement.
- Patience. This may be one of the hardest parts of troubleshooting. Often times a change is made but the troubleshooter is not patient enough to determine the effect and immediately makes another change. Allow processes to stabilize during troubleshooting to determine the ultimate impact.

■ 1.3 What Makes an Ineffective Troubleshooter?

Many of the above characteristics help people to become effective troubleshooters. There are also many traits that make people struggle when troubleshooting including:

- The “know it all”. People that believe they know everything about every aspect of injection molding will one day be in for a rude awakening. Injection molding problems tend to have a humbling effect on troubleshooters, and everyone has something more to learn. Remember every mold, machine, and material combination can create a new opportunity.
- The “this worked last time” syndrome. Many times people get caught in an approach that completely relies on what they have experienced, which in turn puts blinders on them. First understand the problem before trying to implement what worked last time.
- The “Band-Aids and duct tape fixes everything” troubleshooter. This type of person will always look for the simplest thing that can be done whether or not they solve the problem. This mentality often happens in production where the approach can be just “get me the parts I need to make shipment.” While a “duct tape” type of fix may help to limp through a run, the root cause must be addressed and corrected. Putting “Band-Aids” on top of duct tape to keep a job running will lead to scrap and downtime.
- The “flavor of the month”. This often happens when a specific problem is identified and corrected on a given mold in the plant. Often since this solution solved that problem people will try to implement that solution everywhere whether it fits or not.

Overall many people that struggle to effectively troubleshoot are lacking either the time or the tools to be successful. There is always only going to be 24 hours in every day and customer demand for quality parts will persist. This book was written to help provide some tools that can make troubleshooting more efficient and hopefully help people wisely use their time spent troubleshooting.

■ 1.4 Troubleshooting Methodology

As mentioned in Section 1.2, a good troubleshooter uses a systematic approach. The following is a reminder to help with keeping a systematic approach to troubleshooting;

Systematically

Think

Observe

Proceed

This STOP methodology of troubleshooting is meant to do exactly what it says and stop before jumping to conclusions.



Development of STOP

This thought process came years ago while interviewing process engineers and technicians. I would always try to gauge their knowledge by asking questions about how they would handle a problem such as a short shot. The answers I received were usually correct to a point but obviously quite diverse. Often times the answers provided could be the right ones, but, without knowing what was happening, could also lead to disaster. When I reviewed my own mentality, I came to understand that the first thing I would do when troubleshooting was to stop and really examine what was happening. The concept of STOP troubleshooting came about as an easy way to train people in the methodology of troubleshooting.

1.4.1 STOP: Systematically

In the STOP methodology, the S stands for systematically. All troubleshooting should be conducted in an organized and systematic approach. Having a systematic approach will help ensure the root cause of the problem is truly resolved. As a problem is addressed a systematic approach will make it easier to avoid missing a potential cause.

Part of the systematic approach to troubleshooting breaks the problem into four key categories. Many people are familiar with the 5M's often used for fishbone diagrams which are man, method, machine, measurement, and material. For systematic injection molding troubleshooting the 4M's we focus on are:

1. Molding process
2. Mold
3. Machine
4. Material

These 4M's are the key items that a troubleshooter can impact. The "man" is not included because a person can impact any of the 4M's. Each of the 4M's must be considered for potential root causes when troubleshooting. By reviewing the 4M's

it is much easier to troubleshoot with a systematic approach. By considering which of the 4M's could contribute and working through one category at a time a list of potential root causes can quickly be gathered.

All of the defects discussed in this book will use the 4M method for description of potential causes. Utilize the possible causes to systematically work through resolving the problem. Keep asking which of the 4M's could be contributing to the defect and why. Always try to drive deeper to get to the root cause of the problem. An example of using the 4M's is when troubleshooting sink: the natural place to start is with second-stage pressure; however, if the pressure is raised to compensate for a machine problem, was the true issue resolved or are you processing around another issue? The goal of the 4M method is to avoid processing around issues. Often times molders are left trying to work "process magic" to get good parts when a tooling improvement should have been implemented. Using the 4M method helps to keep process windows as wide as possible and will lead to less scrap, waste, and PPM (defective parts per million) in the long run.

Most people are familiar with the "5 Why" approach that was developed at Toyota. This approach is a tool that systematically drives toward asking questions about the root cause. In this approach, the goal is to get to the true root cause by asking why after every answer when problem solving. Many people find this technique useful.

One key to a systematic approach to troubleshooting is to review what has possibly changed in the mold, molding process, material, or machine. Frequently people will work on trying to fix a problem but not address what had actually changed that originally led to the problem. In other words, sometimes technicians are struggling to solve the wrong problem. A common example of this is someone slowing first-stage velocity to fix a burn that was actually caused by dirty mold vents. Using a systematic approach will help to focus on the true root cause of the problem and not to process around an issue.

The mentality to keep when troubleshooting should be to try to remove one potential root cause at a time. Until an issue has been proven to have no effect it remains a potential root cause. Using a systematic approach allows a troubleshooter to remove one cause at a time, focusing initially on the most likely causes and working from there. Always remember though that data is key to proving a root cause.

Change one thing at a time and determine the impact. If a troubleshooter changes multiple things at a time it is impossible to determine what the root cause was. After making a change, always give the molding machine time to stabilize before evaluating the impact of the change. If the process change shows no impact on the defect, it can be reset to the original documented process.

It is also vital to make changes that are large enough to have a potential impact. Frequently processors will make an adjustment to a process and when they do not

see an impact they scratch that variable off the list of potential causes. Remember that if the change is too large and causes other concerns it can be adjusted back towards the original setting. Make sure a parameter has been thoroughly evaluated before it is removed as a potential root cause.

1.4.2 STOP: Think

Think is the step to make sure that a troubleshooter has mentally reviewed the defect and the potential causes that were systematically determined. Before making a change, it is critical to think through what the expected result is as well as potential side effects. Always begin the think step with the question of “is this a new problem or has it been ongoing?” If it is a new problem focus on what changed; with an ongoing problem the focus is more on what needs to be corrected.

Sometimes in the think step of troubleshooting it is necessary to think outside of the box. Many problems encountered in molding are not easily solved and may require a creative approach to resolve. Willingness to not be constrained by comments such as “that’s not the way we do it” is key to resolving problems. As Albert Einstein said, “we cannot solve our problems with the same thinking we used when we created them.” There are many examples of molds where someone said that an area cannot be vented or cooled but through some ingenuity a solution was found. Remember that there are many exceptions to the general “rules of thumb”; critical thinking is vital.

Also, when thinking through a problem, think bigger than the current defect that is in front of you. Always ask if this problem may be happening elsewhere but has not been detected there. In the case of the 4M machine category, any mold that runs in that particular machine may be having problems but some will be worse than others. If one drying hopper is feeding multiple machines a splay problem may start to show up in multiple parts. Think about the root cause and what else it may impact and examine other parts that could be experiencing similar problems.

When thinking about a problem look for opportunities to push the thought process as far up front as possible. Effort put into part and mold design will result in improved process windows, reduced scrap, and more efficient launches. It is much more cost effective to ensure that the initial design is suitable for manufacturing rather than trying to correct mistakes after the mold has been built and run.

1.4.3 STOP: Observe

Observation is critical to solving problems. Much like Sherlock Holmes, a good molding troubleshooter must observe as much as they can regarding the problem and environment.

Observation should be a multiple sense process, meaning look, listen, and even smell what is happening at the molding machine. Visual examination of the parts, the equipment, and the process will most often provide valuable clues. However, when observing a molding machine in operation, the smell of degraded plastic may be an overwhelming indicator of a problem. Strange noises can also be an indication of something wrong in the process. Always observe with all senses to try to discover any clues to the cause.

When observing a molding process, a walk around the machine is usually a good practice. A quick walk can often highlight a concern that must be addressed. Key things to look for include:

- Auxiliary setpoints and actual values
 - Hot runner controllers
 - Thermolator
 - Chiller
 - Dryer
 - Gas assist equipment
- Clamp and robot movements
- Trimming operations
- Operator handling
- Material identified and correct
- Clear standards available?
- Anything that is damaged or out of place

Figure 1.1 shows a simple chart called the 4M Basic 8. These are the basic items that need to be observed during initial troubleshooting. Many problems can be resolved by simply working through these eight questions, and a “no” answer for any of these questions indicates a likely starting point for resolving the problem. The 4M Basic 8 is a very simple procedure that all molders should be able to work through and answer prior to calling for technical support. Utilizing the 4M Basic 8 or something similar as a starting point for troubleshooting puts good habits in place for troubleshooters.

4M Basic 8		Y/N
	Molding Process	
1	Match documented setup?	
2	Fill Only Weight?	
	Mold	
3	Vents clean and open?	
4	Mold not damaged?	
	Machine	
5	Same machine?	
6	Machine achieving setpoints?	
	Material	
7	Correct material?	
8	Dry?	

Figure 1.1 4M Basic 8

Another key to the observation step of the STOP methodology is to ensure that good baseline data is available. Scrap reports are a critical piece of data to determine what the baseline defect rate is. Figure 1.2 shows a pie chart that provides a breakdown of the key scrap items for a particular job. Based on the Pareto Principle a likely expectation is that 80% of the scrap is a result of 20% of the potential root causes. This pie chart provides an easy reference tool to determine where the troubleshooting efforts should be focused.

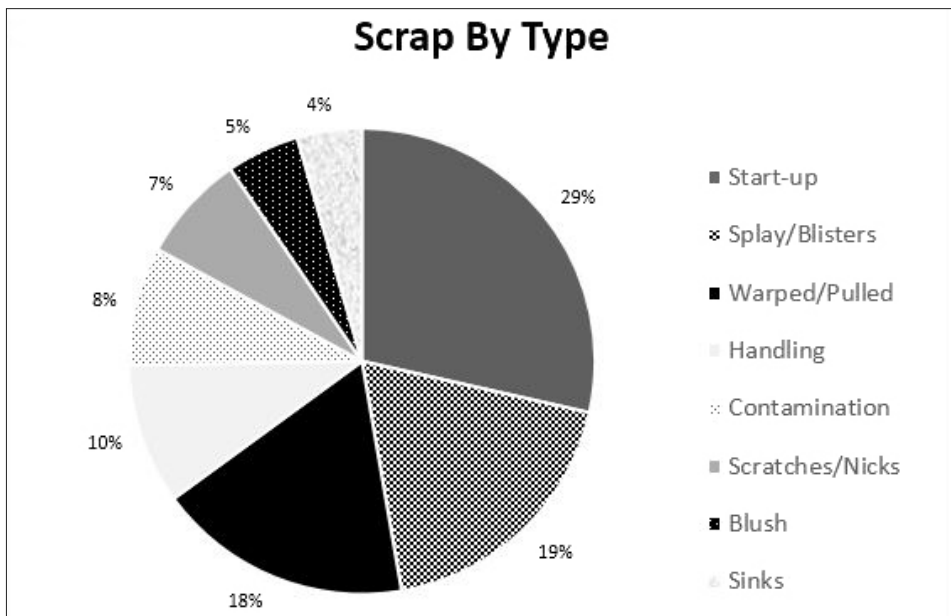


Figure 1.2 Pie chart breakdown of scrap percentage

A key observation task when reviewing data during troubleshooting is to evaluate if the problem has been an ongoing issue or has just recently started to occur. Figure 1.3 shows a graph that greatly illustrates an example of a sudden appearance of a defect. The part had been running with very little contamination scrap (less than 10% of total scrap) but then in June the contamination scrap numbers started to rapidly increase. The job continued to run poorly for approximately 5 months until the root cause was determined (problem with agglomeration of colorant components in the color concentrate). Validation of the improvement was simple due to the rapid drop of scrap in November.

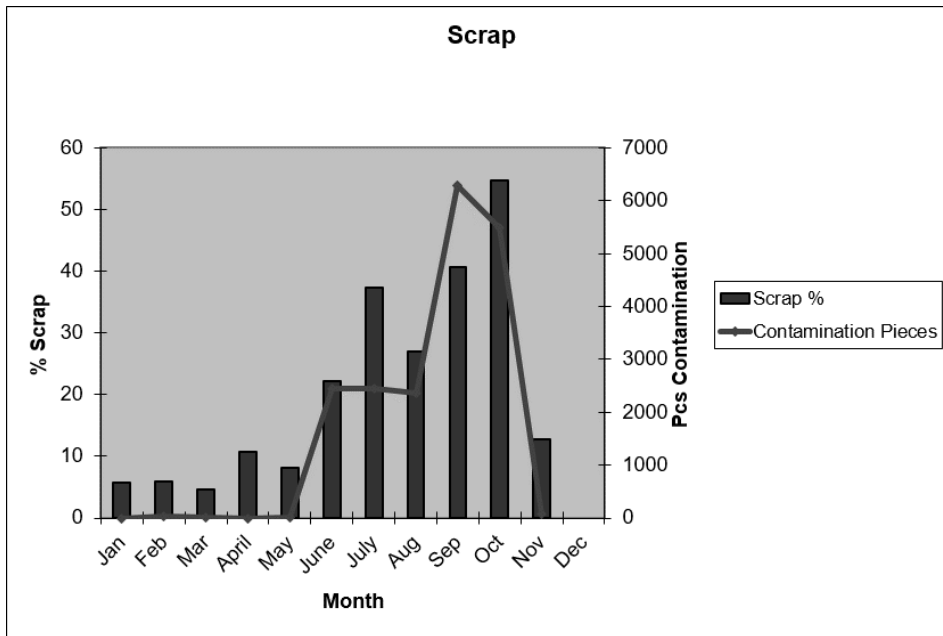


Figure 1.3 Graph showing a sudden increase in scrap and a corresponding sudden drop off in scrap after the problem was fixed

If a problem suddenly occurs the most important question to answer is “what has changed?” The power of observation is critical to determining what potentially changed. The 4M Basic 8 helps to evaluate possible changes and this simple step should always be done before diving deeper into the problem-solving process. It is important to understand that a sudden change may not have been something that someone did intentionally. Things that must be observed for possible unintentional change include:

- Shop environment
- Material variation

1.4.7.6 Is/Is Not

Is/is not can be applied as a simple tool to help narrow the scope of a problem. The way to conduct an is/is not evaluation is to make a chart with headings of “is” and “is not”. The problem is then broken down into statements about what it is or is not, as shown in Figure 1.7.

Issue: *Splay on mold #1234*

Is	Is Not
<i>Occurring only on mold #1234</i>	<i>Occurring on any other molds</i>
<i>Located randomly on part</i>	<i>Isolated to specific areas</i>
<i>Happening all day long</i>	<i>Happening at specific times</i>

Figure 1.7 Is/Is Not example

1.4.7.7 Change Log

A change log can be used to help keep troubleshooting systematic by providing a way to track the changes made. A change log can be something such as Figure 1.8, which provides a simple sheet to record any changes and the impact that they had on the defect. This can be handy for communicating across shifts so everyone can see what was adjusted and the impact the change had on the problem.

9

Drying

■ 9.1 Introduction

Removal of moisture prior to processing is absolutely critical for molding success. Moisture in plastic pellets will turn to gas when subjected to molding temperatures. This gas will be contained in the plastic melt until the plastic enters the mold where the depressurization on the melt stream will allow the gas bubbles to reach the surface of the mold, leaving behind the streak of splay. Hygroscopic materials such as ABS, polycarbonate, nylon, TPU, polyesters, cellulose, or PC/ABS absorb moisture from the environment and require drying.

Some additives including fillers and impact modifiers can result in non-hygroscopic materials needing to be dried. There will be cases when non-hygroscopic materials are literally soaking wet (for example from a roof leak), and in these cases the material will need to be dried prior to molding.

Material suppliers will provide a recommended drying temperature and time for hygroscopic materials. It is critical to follow these drying specifications to ensure that the material is dry enough to successfully process (see below for drying requirements).

■ 9.2 Keys to Drying

Successful drying requires the following:

- Correct temperature
- Dry air
- Air flow
- Time under the above conditions

To ensure adequate drying it is critical to have all four of these conditions met. Four hours of drying time is meaningless if the temperature requirement is not met. A typical desiccant dryer will provide an air dew point of -40°F . Keep in mind that the dryer temperature will help release the moisture from the pellets, the low dew point will allow the air to pick up the moisture, and the air flow exposes more of the pellets to the warm/dry air. Figure 9.1 shows an example of a typical drying hopper.



Figure 9.1 Typical drying hopper

There are many ways that incomplete drying can occur that relate back to the four key drying parameters.

9.2.1 Temperature

Too low a temperature can come from the following problems:

- Drying temperature set too low:

It is vital to follow the material suppliers recommended dryer temperature settings. If the temperature is set too low the moisture will not be released by the plastic resulting in lack of drying.

- Incorrect location of dryer control thermocouple or RTD:

The temperature should be measured at the hopper inlet. If the temperature is measured at the dryer outlet there will be a drop in temperature before the air reaches the material. The temperature set point must account for this temperature drop if you are controlling based on dryer outlet rather than hopper inlet. For improved efficiency use insulated hoses between the dryer outlet and the hopper inlet as this will limit the amount of heat loss.

- A burned-out heater can prevent a dryer from achieving the set process temperature. If the dryer is alarming for low temperature the heater may need to be checked and possibly replaced.

Bear in mind that a higher drying temperature is not the route to faster drying! If a material is dried at too high of a temperature it will become tacky or even melt, which will result in what is often called a “hard ball”, which is when the material pellets stick together and will not feed through the drying hopper. A “hard balled” or “rocked” drying hopper means hours’ worth of difficult work trying to remove the stuck plastic. This is an experience that creates a wonderful learning opportunity, and the person who set the temperature too high should be the one who has to remove the melted plastic; chances are they will not repeat this mistake!

9.2.2 Dry Air

As the moisture is released from the material by heating the moisture must be carried away. Moving dry air through the drying hopper will allow the moisture to be carried away from the plastic. Without providing the dry air the water molecules have nowhere to go and as a result the material will stay wet.

The dryness of air is measured by its dew point, the temperature at which moisture in the air will condense. The dew point of the air should be between -20 and -40 °F for effective drying. Common reasons for not reaching the required dew point include:

- Bad desiccant, either due to the age of the desiccant or desiccant that has been contaminated with plastic fines or byproducts not filtered out of return air. As desiccant pellets can and will go bad, use a dew point meter to determine if there

are issues achieving a low enough dew point. Some dryers have dew point meters built into them or portable units can be utilized to monitor a dryer.

- On dryers with multiple desiccant beds you must verify the dew point from each of the beds, and you may find one bad and one good desiccant bed. This means that you will need to verify the dew point over a time period. One way to verify the dew point over time is to purchase a chart recorder to connect to the dew point meter. Another method is to connect the dew point meter to a data monitoring system such as RJG eDART®.
- Return air too hot:
For optimal performance of a desiccant the return air should be between 120 and 150 °F. If drying set points are above 180 °F the return air will probably be too high for optimal performance. When drying at temperatures above 180 °F an after cooler should be used to cool the return air to below 150 °F. Also keep in mind that return air hoses should not be insulated as this will allow the return air to cool as it travels back to the dryer.
- Burned out regeneration heaters will not provide enough heat to remove the absorbed water from the desiccant. If the regeneration heaters are not working you will see a high dew point.
- Make sure that there are no leaking seals or holes in the drying hoses that would allow moist ambient air to be introduced into the drying hopper.



How to Use an RJG eDART® as a Dryer Monitor

Connect the output from the dew point meter to a 0–10 V analog input module. You can also use a dew point meter from RJG that will connect directly to the eDART® without the analog input module.

Anywhere that you wish to collect temperature data from can have a thermocouple installed, and the thermocouples can then be connected to an RJG Quad Temp Module. You could measure hopper inlet temperature, dryer outlet temperature, and maybe even regeneration temperature.

With the above information you can establish full time monitoring with a permanent eDART® or setup a portable dryer qualification methodology where you monitor the dryer for 24 hours to determine how well it is working.

Checking Desiccant

To verify if a desiccant is working conduct the following experiment: Dry desiccant can be taken from a dryer desiccant canister or it can be dried in an oven for 2 hours at 400 °F (placed in an appropriate container). Allow the desiccant to cool to room temperature and then pour some water into the container with the desiccant. If the desiccant is active there will be a violent exothermic reaction (use caution!) as the desiccant absorbs the water, steam will be observed, and a significant temperature rise will be detected (> 20 °F). If the desiccant is not active there will be no reaction or temperature rise.

An inactive desiccant should be replaced in the dryer because it will not obtain an adequate dew point with a bad desiccant.

9.2.3 Air Flow

Poor air flow can come from the following issues:

- Plugged filters restricting the air flow:
All dryer filters must be kept clean. Do not run dryers without filters or the desiccant bed will become contaminated and not be capable of achieving adequate dew points.
- Feed hoses can become crushed, which restricts the air flow. Verify that all hoses are free of crushed areas and holes.
- Too small of a dryer for the drying hopper:
Dryers are measured in cubic feet per minute (CFM) of airflow. If the dryer is undersized relative to the hopper there will not be enough air movement in the hopper to effectively reach much of the material.
- A burned-out blower will result in no air flow. Check that the blower is running and has not burned out. Verify that the dryer is not wired with reverse polarity or the blower will run backwards.
- Most modern dryers will alarm if the airflow is inadequate. Do not make a habit out of silencing alarms on equipment: It is ringing to tell you something.

9.2.4 Time

Lack of drying time typically comes from the following:

- Simply starting up the machine prior to the required amount of drying time:
This is a plant discipline issue, and processors must know that the material has had adequate residence before starting the press.
- Allowing hoppers to run down before filling them:
If they run too low you will have material that has not dried long enough. This is also a plant discipline issue. Material handlers cannot be allowed to let hopper volumes run down.
- Material flow:
Molding expert John Bozzelli has conducted studies that show that some dryer designs will tend to have a “rat hole” flow where the center pellets travel much faster than the outer pellets in the hopper [1]. This is a hopper design problem

that impacts material residence time in the hopper. This study can be replicated by filling a hopper and adding a layer of another color of pellets to the top of the dryer as tracer pellets. Start loading the material from the hopper and note how long it takes to see the alternate colored pellets.

- Bear in mind that the material supplier recommended drying times may not account for material that has become very wet due to sitting in open containers in a high-humidity environment. Additional time may be required to ensure that the material is dried to an adequate level.

Note that too much time spent drying can have a negative impact on some materials. What is normally considered an over-drying problem is a lack of moisture content in a material like nylon that in turn leads to a higher material viscosity (the water was acting as a plasticizer). When nylon is dried to very low levels of moisture content the viscosity change may actually lead to a pressure-limited condition that impacts the ability to fill the mold. There are cases when materials are dried much longer than the recommended drying time so that oxidation of the material can occur, which can lead to a breakdown of the physical properties of the material. Always try to avoid leaving material at drying temperatures for extended periods of time; dryer set points can be reduced to maintain a material at a dried state without risking over-drying problems.

■ 9.3 Moisture Analysis

Material moisture content can be verified prior to molding by utilizing a moisture analyzer. There are two common types of moisture analyzers which have very different techniques:

1. Carl Fischer titration method:

This method relies on precise analytical equipment and requires chemicals to run. This test will provide a true moisture reading from a plastic.

2. Loss on weight method:

This method uses a very precise scale to weigh the material at the start of the test. The material will be heated forcing it to give up moisture and the moisture analyzer will calculate moisture percentage based on this weight loss. Note that this method is more convenient but is less accurate because it will also measure other things that leave the material including residual monomers or low molecular weight additives.

Every plant must evaluate their choice of moisture analyzer. Carl Fischer titration will provide more accurate results but the cost of that is measured by the fact that it is a lab-style piece of equipment that takes more skill to run and maintain.

Figure 9.2 shows an example of a typical loss on weight moisture analyzer and Figure 9.3 shows an example of the typical printout for a moisture analyzer showing dry material.



Figure 9.2 Loss on weight moisture analyzer

```
SARTORIUS  
Mark 3 HP Moisture Analyzer  
Control SN: 25753067  
Module 1: 25753054  
Operator:  
Program 2: ABS-Starex MP  
UNITS: Moisture  
MODE: Standard Start Delay: 9 sec  
TEMP1: 130C TIME1: 8.0  
TEMP2: Off TIME2: Off  
SLOPE: 0.010% / 2.5 min actual  
STANDBY: 130C EQUILIBRATE: Off  
IDEAL WT: 50.0 grams LOCK: Off  
Elapsed time: 08:20  
RESULT 01/30/2017 10:12 PM  
0.009 %M  
Initial Weight = 50.1996 grams  
Final Weight = 50.1953 grams  
Weight Loss = 0.0043 grams
```

Figure 9.3 Printout from moisture analyzer verifying material is dry

3. Valve gates are used to direct the gate onto the part with minimal vestige and are also used to control the flow when using multiple valve gates. Because they can be shut off independently you can control flow fronts and knit line. When doing a color change with a valve gate the previous color may stick to the pin and continue to drag out. Cycling the valve open and closed can help with breaking free of the previous material or color.

■ 11.5 Drooling, Stringing, and Sprue Sticking

Drooling from the hot drop tip or sprue is usually a result of a lack of cooling or lack of bearing surface. Tip designs over the years have incorporated insulator gaps and minimal contact with the tip to prevent freeze off and heat transfer to the cavity blocks. In many cases and with some materials this is a good thing. But with some materials an increased contact surface with the cavity steel along with cooling lines around the hot drop is necessary to prevent drooling, stringing, and sprues from sticking.

■ 11.6 Freeze Off

Freeze off in the tip area is usually caused by a lack of heat or the orifice size being too small. With some materials, especially semi-crystalline polymers such as nylon, temperature control at the tip is critical. This is when you want minimal contact surface with the tip and the cavity steel. Many hot runner suppliers use different tip designs to increase temperature control at the orifice. Low vestige tips have a pointed insert, typically called a spreader tip, that is designed to maintain temperature control at the orifice to prevent freeze off. The location of this spreader tip in relation to the orifice is critical and manufacturer specifications should be followed.

■ 11.7 Orifice Size

The orifice size will depend on the material, wall stock, and tip style being used. It is important to keep an open mind with orifice sizes when addressing issues with pressures, high gates, drooling, freeze off, and scrap.

Selection of proper orifice size must be analyzed carefully to ensure a balance between all factors. Computer-aided flow analysis can help with predictions of how well a given gate orifice will be at filling and packing a mold. Consult with material suppliers and hot runner manufacturers for recommendations on orifice sizes.



Case Study

This concerns a part having a scrap issue with splay where the orifice size ended up being the solution. This was a part with four low vestige tips that had a spreader tip in the center of the gate orifice. Many will just consider the orifice diameter and not include the area of the spreader tip that reduces the volume. In this case the orifice diameter was 0.050" and the spreader tip in the center of the gate was 0.025" diameter. The area of the spreader tip reduced the area/volume by 25%. The fill speeds with this gate needed to be on the high end to make a good part but we struggled with a lot of splay. We opened the orifice diameter to 0.060", which was an increase of 55% in area/volume when considering the area that the spreader tip took away. This allowed us to adjust the fill speed and eliminate our splay/shear issue.

11.8 Leakage

Hot runner leakage can be a major problem that will shut down a mold. A big development toward reducing hot runner leakage occurred when the hot drops started being threaded to the manifold versus relying on the stack height, seal rings, and bolt patterns in the mold plates to hold the hot runner together. Some toolmakers complained from a maintenance perspective that this was more difficult to work on when the drops had to be removed for service. In some cases this was true with threads getting galled up and creating another mess. But improvements with thread designs and coatings have reduced this concern among toolmakers. So in the big picture of hot runner issues this has been a big improvement for maintaining molds.

Another observation over the years, but not a common one recently, is with support in the hot half. If the areas cleared out for the hot runner are excessive, cavity pressure can lead to deflection within the mold plates leading to leakage.

■ 11.9 Zones and Wiring

Hot runners have zones, typically identified with numbers, which are dependently controlled with a heater and a thermocouple. It is important to have the wires labeled for each zone so it is easier to troubleshoot versus having to chase wires down, especially when multiple zones are used. A hot runner schematic should be on the side of the tool showing each zone, location, and the heater watts.

The power plug/connection and the thermocouple plug/connection are also identified by zones. So, for example, the zone 1 heater leads would be to zone 1 on the power plug and the thermocouple to zone 1 on the thermocouple plug. The two wires coming off the heater are the same but on the thermocouple they are not. The thermocouple has a positive and negative wire that must be wired to the correct location on the plug or it will not function properly. Similar to the battery in your car, it is not complicated but will not work if wired in reverse. Also, thermocouples come in different types but the J type with the red and white wires is most common. The positive wire is magnetic, and is the white wire for the typical J type, and the red one is the negative. If you are ever in doubt which one is the positive wire you can use a magnet to find out. Make sure to use the proper thermocouple for the chosen hot runner controller. With thermocouples be cautious adding wire extensions unless you are experienced with proper methods and problems with cold junctions. With the heater and thermocouple any connections with extensions must be insulated.

■ 11.10 Hot Runner Troubleshooting

There are some things you can do in the molding machine to troubleshoot hot runners instead of pulling the mold for repair. A first thing to try when having hot runner issues is to change out the cables and controller. Long experience has shown that the controller or cables are often the source of the issue. Also, just because the controller shows a zone at the proper set temperature does not necessarily mean that this is the case if you are having an issue. Also verify the pins in the plugs, because at times they can get pushed in not making contact with the connection on the cable plug.

Use a pyrometer with a 0.040"–0.060" diameter sheath thermocouple to verify temperatures inside the hot drops or the inlet channel. With valve gates you pull the valve pin back to get inside the drop flow channel (note: always use proper safety precautions including face shields and move the injection unit away from the mold to avoid a blowout while probing tips). Make sure to contact the steel in

■ 23.1 Description

Contamination is a broad term that covers visual defects that appear in a molded part. Contamination may show up as specks of discoloration, streaks, splay, delamination, etc. See Figure 23.1 for an example of material contamination.

Also known as: black specks, black/brown streaks, color swirls

Mistaken identity: splay

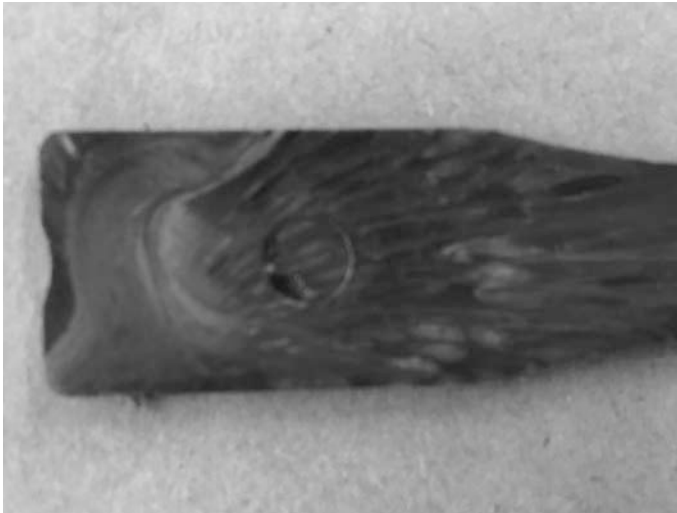


Figure 23.1 Material contamination

■ 23.2 Contamination Troubleshooting Chart

Table 23.1 shows the contamination troubleshooting chart.

Table 23.1 Contamination Troubleshooting Chart

Molding Process	Mold	Machine	Material
poor changeover	hot runner hang up	hang up areas	improper storage
high melt temperature	high hot runner temperature	anti-seize	regrind
	wear surfaces	robot contamination	incoming contamination
	lubricants		mixed materials
	cleaning		

■ 23.3 Contamination Troubleshooting

There are a wide variety of ways that material can become contaminated. It can be a major challenge to try to work through all the possible routes of contamination. Most of the time the best place to start is with the material being brought to the molding machine and work backward from there.

23.3.1 Contamination Troubleshooting Molding Process Issues

Contamination can be brought on by several process issues including:

- Poor changeover
- High melt temperature

23.3.1.1 Molding Process: Poor Changeover

When a molding machine is stopped and goes through a material or color change there are many opportunities for contamination to occur. The entire feed system and melt delivery system must be thoroughly cleaned out to ensure that there is no residue of the prior material. Some of the key areas to examine include:

- Drying hopper. The drying hopper has several hang up areas including along the door edge, in the hopper loader, around the dispersion cone, the sample/drain tube, and in the distribution box. When conducting a material change all of these areas must be cleaned of all remains of the previous material. Hoppers can be

vacuumed out to help with clean out. Watch out for areas such as the sample tube because this is a spot that is often forgotten.

- Feed lines. Whether feeding the machine from the drying hopper, gaylord, or bag, it is critical to ensure that all of the material has been cleaned out. This is usually as simple as removing the feed line and allowing the vacuum loader to suck all of the material out of the feed lines. There have been cases where the material handler does a nice job of cleaning everything out but forgot the feed lines and when the new material was introduced all of the previous material was pulled in with it, contaminating the material.
- Machine hopper. The machine hopper will have a variety of locations where material can collect. Make sure to remove the magnet and clean out around the magnet drawer (see Figure 23.2). The hopper should be completely cleaned of all residue from the previous material. Also be sure to watch for any mismatch ledges between components such as the feed throat and hopper.
- Loaders. Loaders can also be a location that will trap material pellets. All loaders must be cleaned as part of the material changeover process.
- Additive feeder bins. Additive feeder bins must be cleaned when swapping colors. The feed screw on a volumetric feeder must also be removed and cleaned to avoid contamination.



Figure 23.2 Pellets stuck in magnet drawer

Often times molding shops will provide very little training for material handlers. If a material handler does not understand the importance of thorough cleaning during material changes they may cut corners which will lead to contamination. Provide a formal training for everyone in the shop that is responsible for loading materials to ensure that changeovers are executed correctly.

23.3.1.2 Molding Process: High Melt Temperature

When plastics are overheated they can degrade and contaminate the material with black specks or streaks. See Chapter 15 on black specks for more information about this problem.

23.3.2 Contamination Troubleshooting Mold Issues

Mold-related concerns that can cause contamination include:

- Hot runner hang up
- High hot runner temperatures
- Wear surfaces
- Lubricants
- Cleaning

23.3.2.1 Mold: Hot Runner Hang Up

Any areas in a hot runner system that can trap material can lead to contamination. Material trapped in hang up areas can continue to bleed into the melt stream long after the material change has been completed. When dealing with materials that are more temperature sensitive the trapped material may degrade and contaminate the parts with charred black specks. Figure 23.3 shows contamination from a hot drop tip.

Hot runner assemblies should be built in a way that at running temperatures there will be neither ledges nor mismatch locations that would hang up material. Drops must be securely assembled to the manifold so as to not leave any gaps between the drop and the manifold body.

Corners in hot runner manifolds can easily lead to dead spots where material hangs up. Depending on the hot runner design some manifolds will have corners that are gun drilled at 90° intersections. With a 90° intersection the outside of the corner will end up as a dead spot and material will be trapped in this location. Better designs have machined corner plugs with a curved corner, no dead spots.

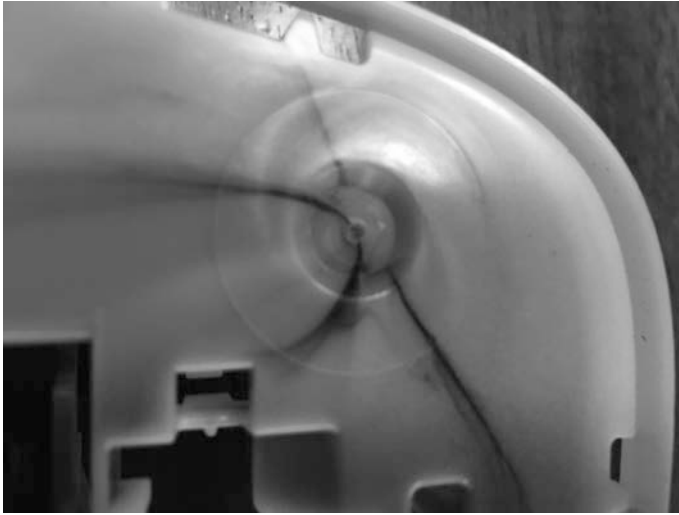


Figure 23.3 Contamination at hot tip

A manifold can be damaged and cracked which will provide a gap at the crack that will allow material to become trapped. Cracking a manifold is usually a result of a cold start where the manifold was not given enough time to heat soak. Cracked manifolds often need expensive and time-consuming repairs; therefore, educate process technicians to give a hot runner plenty of soak time before injecting plastic through the manifold.

23.3.2.2 Mold: High Hot Runner Temperatures

When hot runners are running at higher temperatures than is required for a material the odds of degrading material increase. As the material degrades in the hot runner system the result can be brown streaks or black specks contaminating the part.

Verify that the hot runner temperatures are set correctly and that actual temperatures are reading accurately. If a hot runner zone is constantly calling for heat it may indicate that a zone is either wired incorrectly or has a thermocouple misplaced.

23.3.2.3 Mold: Wear Surfaces

Any surfaces on a mold that rub against another surface have the opportunity to wear. Over time the metal dust or flakes that are worn from the surface can contaminate the cavity of the mold. This metallic dust will contaminate the molded part and may produce a visual defect.

Wear surfaces to keep an eye on include gibs, wear plates, die locks, cavity locking angles, and shutoffs. The dust that appears is often an early sign of galling starting so it is important to address any wear problems when they are detected.

23.3.2.4 Mold: Lubricants

Any of the lubricants used on a mold can lead to contamination of a molded part. Whether it is grease or oil, when excess lubricants reach the cavity they can contaminate the part producing scrap.

A key item to watch for is over-lubricating a mold. Frequently when a mold comes back from service, all moving components will have too much grease on them. There can be cases where a mold will bleed grease for hours of molding, producing nothing but scrap. Work with tooling sources to establish a standard method of lubricating a mold. It is not as simple as smearing some grease on the pins; grease should be lightly applied because over-greasing can lead to problems.

It is also important to find lubricants that work best for a given application. There is a wide variety of lubricants available and some perform better for specific applications.

23.3.2.5 Mold: Cleaning

Mold cleaning or lack of cleaning can both lead to contamination. For optimized processing a mold should be kept clean. Molds that are dirty can lead to surface contamination of molded parts. Caution must be used when cleaning molds, though, because mold wipes can leave behind fibers that can then be molded onto the surface of a part resulting in a squiggly, worm-like defect (see Figure 23.4).

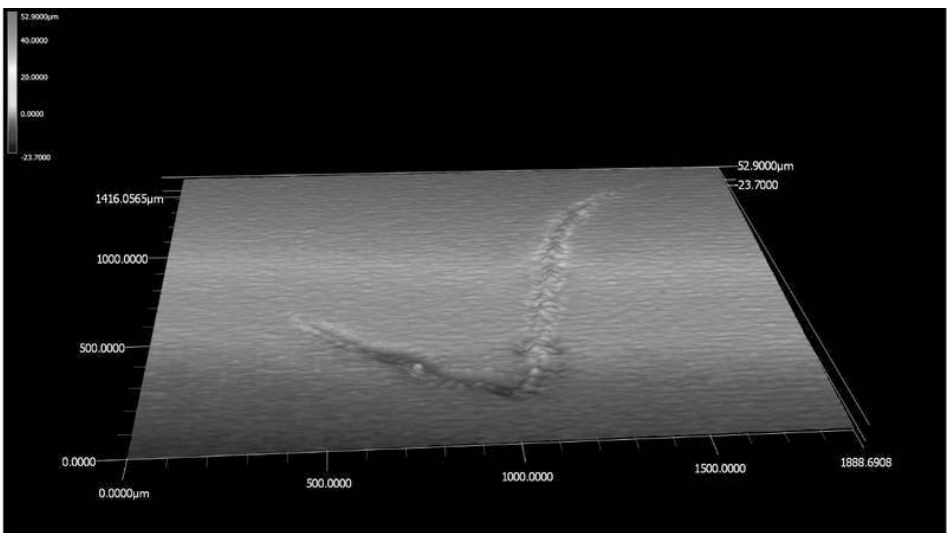


Figure 23.4 Surface scan of a mold wipe fiber molded onto a part surface

When wiping a mold surface, use clean lint-free wipes to minimize the opportunity for contaminating the mold surface. A dirty wipe not only leaves behind contaminants but may also scratch the mold surface.

Be aware that there are cases where the grease in the mold breaks down due to chemical contact. This can be magnified if someone sprays mold cleaner directly on the ejector half of the mold. The cleaner solvents can impact the viscosity of the grease leading to contamination of the molded part from the broken-down grease.

23.3.3 Contamination Troubleshooting Machine Issues

Some of the machine factors that can lead to contamination include:

- Hang up areas
- Anti-seize
- Robot contamination

23.3.3.1 Machine: Hang Up Areas

Any areas in the melt delivery system that have a mismatch can cause material to hang up. Some of the key areas that should be evaluated for hang ups include:

- Hopper to feed throat
- End cap to barrel
- Nozzle adapter to end cap
- Nozzle to nozzle adapter
- Nozzle tip to nozzle
- Nozzle tip to sprue bushing
- Damaged spots on screw, barrel, non-return valve, and end cap

It is a time-consuming process to disassemble these components and inspect for hang up areas but sometimes it is necessary to get to the root cause. Prior to shutting down for disassembly run another color of material through the barrel. This alternate color can help highlight spots where the original color is being trapped. Also look for areas of charred material when conducting this inspection. Again, this is a time-consuming process so make sure other potential causes are investigated first.

Examination of nozzle tips of different style will show locations where material can become trapped. See Figure 23.5 for cross sections of common nozzle tips: notice the potential dead spot at the ball end of the general-purpose style tip. General-purpose tips can cause contamination and streaking issues due to this dead spot.

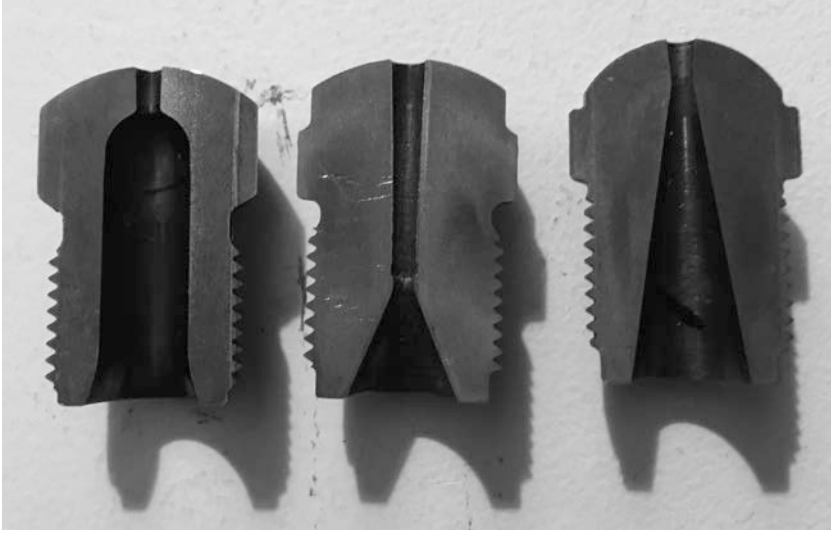


Figure 23.5 Nozzle tips: general purpose, nylon, and full taper

23.3.3.2 Machine: Anti-seize

If people are conducting proper installation of new nozzles and nozzle tips they are applying thread anti-seize molded onto the nozzle threads to prior to assembly. If too much anti-seize is applied to the component it is possible to contaminate the plastic melt stream with the anti-seize (see Figure 23.6, for example). Anti-seize will usually result in dark streaks in the part.



Figure 23.6 Nozzle tip with excess anti-seize (top) and appropriate amount of anti-seize (bottom)

Anti-seize is an item where “if a little is good a lot is better” does not apply. Teach processors to use an appropriate amount of anti-seize to avoid running scrap at startup.

23.3.3.3 Machine: Robot Contamination

Take a look at the robots in the shop. Are they dusty with grease drips in various locations? When a robot enters the mold to pick a part it can contaminate the mold. One example of this is when a dirty air line brushes up against the cavity, because this will transfer some of the dirt and potentially lead to a cosmetic defect.

Another factor to consider with the robot is the condition of the end-of-arm tooling. If it is very dirty the vacuum cups can leave a surface contamination on the part. Also if components from the end of arm tooling touch the mold surface they may leave behind contamination that can end up in the cavity.



Case Study: Robot Contamination

This example was on a single-cavity ABS part that was experiencing what appeared to be splay. Examinations of drying conditions, moisture content, venting, process settings, and melt temperatures all led nowhere. Utilizing the STOP methodology and observing the process showed that when the robot picked the part it backed away from the ejector and a dirty air line brushed against the cavity. The cycle was stopped and a small smudge of grease/dirt was detected on the cavity. The part was molded and it was scrap due to the contamination. A couple of cable ties and some cleaning resolved the issue. In this case utilizing the STOP methodology earlier would have led to quicker effective troubleshooting.

23.3.4 Contamination Troubleshooting Material Issues

There are many ways that a material can become contaminated including:

- Improper storage
- Regrind
- Incoming contamination
- Mixed materials

23.3.4.1 Material: Improper Storage

In every molding shop there are a wide variety of foreign contaminants including:

- Dirt, dust, and pollen
- Other plastics

■ 33.1 Description

Variations in gloss on a part will lead to cosmetically unacceptable parts. If the part has areas that are glossy and areas that are dull the variation in appearance can be very unattractive. Figure 33.1 shows an example of gloss variation.

Also known as: spotty, glossy, dull

Mistaken identities: sink, scuff



Figure 33.1 Gloss variation

■ 33.2 Gloss Variation Troubleshooting Chart

Table 33.1 shows the gloss variation troubleshooting chart.

Table 33.1 Gloss Variation Troubleshooting Chart

Molding Process	Mold	Machine	Material
second-stage pressure	mold surface finish	machine performance	material type
second-stage time	cooling		additives
fill velocity	venting		
fill only weight	inconsistent wall stock		
mold temperature			
melt temperature			

■ 33.3 Gloss Variation Troubleshooting

Gloss is determined by the nature of the surface of the mold, i.e. polished or grained, and how well the plastic replicates the mold surface. The first step of troubleshooting gloss problems is to establish if the mold surface is being replicated. As an example, if a mold surface is a sand-blast finish the part will be dull no matter what the process is (see Chapter 6 for more on mold finish).

Another item to keep in mind when reviewing gloss callouts is that parts that are on the two ends of the gloss spectrum will tend to show scratch and mar defects easier than parts with a more mid-range of gloss. Sometimes the difference between a 2.5 and 3.5 gloss reading can make a major difference in the appearance of the part and the ability of the part to look good after handling. Extremely low gloss levels such as a 2.5 can make it very challenging to get a good-looking part.

It is important to understand that in many cases gloss problems are actually truly a read-through (difference in gloss due to differential pack and shrink at wall stock transitions).

33.3.1 Gloss Variation Troubleshooting Molding Process Issues

Common molding process related problems include:

- Second-stage pressure
- Second-stage time

- Fill velocity
- Fill only weight
- Mold temperature
- Melt temperature

33.3.1.1 Molding Process: Second-Stage Pressure

The most important process setting for gloss on molded parts is the pressure applied to the plastic in the cavity. If not enough pressure is applied to the plastic the molded part will not replicate the finish of the mold well. This applies for polished surfaces, textures, and sand-blasted finishes. Think about the surface of the molded part compared to the mold surface: is the plastic being packed into all of the microscopic surface detail of the surface of the mold?

Examining mold surfaces under magnification will show a series of polish scratches on polished surfaces and a series of peaks and valleys on a textured part. To have adequate replication of these microscopic surface details the plastic has to be pressurized at the appropriate levels. If the pressure is not high enough, the surface will not reflect the details of the mold surface.

Variation in pressure across a mold will result in a potential variation in gloss levels across the part. Low-pressure areas will not replicate the surface as well, and will typically have a different gloss appearance when compared to better-pressurized areas. This can often manifest as a distinct difference between areas near and farthest from the gate. Also watch for areas that fill quickly and freeze before being packed out.

One of the challenges faced in injection molding is trying to minimize the pressure drop across the mold cavity. Some of the keys to minimizing pressure drop include filling fast to avoid viscosity variations during first-stage injection. Proper gate placement is also critical to ensuring a minimized pressure drop. To determine gate quantity and location a flow analysis software such as Moldflow® is a valuable first step before steel is cut.

When troubleshooting for gloss problems check that the second-stage pressure is set at the correct value (do not forget to account for intensification ratio). Also check to see if the correct nozzle and nozzle tip are being used because a mixing nozzle will result in a large pressure drop between the machine and the end of the cavity.

Cavity pressure transducers will provide very useful data on the actual pressure within the mold. If a transducer is located near the gate and at the end of fill location, accurate data on what is occurring in the cavity will be easy to obtain.

33.3.1.2 Molding Process: Second-Stage Time

Second-stage time that is not long enough to ensure gate seal can lead to a glossy area near the gate. If the plastic is not retained in the cavity until gate seal there will be a depressurization of the plastic near the gate. The release of plastic near the gate will create a localized low-pressure area that will typically have a different gloss level than the rest of the part.

Verify that the second-stage time is set correctly per the documented process. A gate seal study should be conducted during process development to determine the appropriate second-stage time. If a gate seal study was not conducted take the time to complete a gate seal study to understand the correct time required for establishing gate seal.

33.3.1.3 Molding Process: Fill Velocity

Generally, a faster fill velocity will provide less pressure drop and yield better surface replication. Faster fill rates tend to provide a glossier surface whereas surfaces obtained with slow fill rates tend to be duller. Faster fill velocities also lead to a part that will pack out more uniformly.

Verify that the fill time is correct according to the documented process. Fill velocity settings may not match, but fill time should. If fill time and fill only weight replicate the desired process that ensures that the same volumetric flow rate occurred.

33.3.1.4 Molding Process: Fill Only Weight

If the fill only (95–98%) shot is too light due to an early transfer there may be a gloss difference that forms in a sharp line where transfer occurred. An early transfer can create a very distinct area at end of fill that looks different.

Check the fill only weight to ensure that the part is filled to 95–98% during first stage. If the shot is short the transfer position should be adjusted to provide an adequate fill shot. Be aware that filling too short can lead to a lag in second-stage pressurization. Figure 33.2 shows process monitoring data on a process with an early transfer. Note how the screw travel curve moves significantly after transfer. As the screw continues to move forward the machine is trying to reach the set second-stage pressure but it takes several seconds. Early transfer creates many issues but gloss variation is an often-overlooked problem.

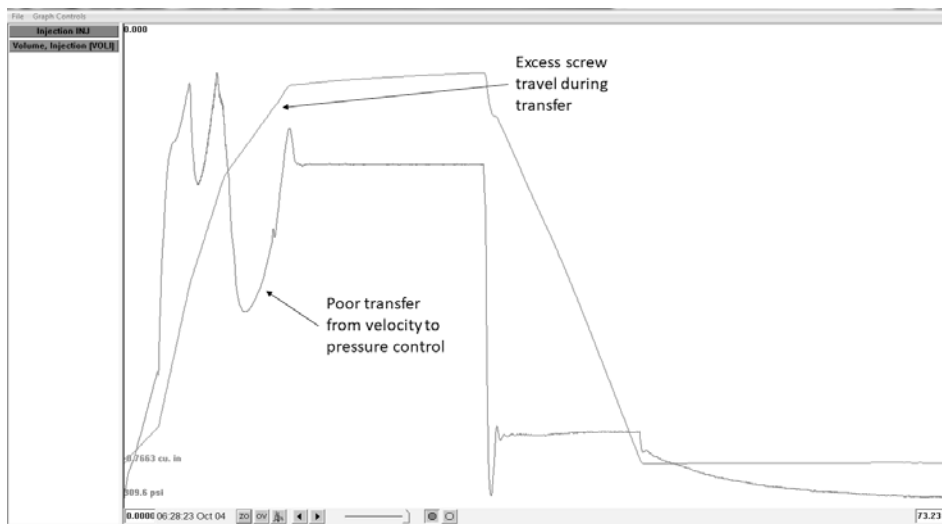


Figure 33.2 Process monitoring curves showing an early transfer

33.3.1.5 Molding Process: Mold Temperature

A low mold temperature can tend to produce a lower gloss level whereas a higher mold temperature can produce a higher gloss level. However, this is another factor that impacts how well the plastic replicates the mold surface, and hotter mold surfaces lead to better replication of the mold surface.

In recent years rapid mold heating and cooling systems have been used to improve the replication of the mold surface. The extra heat that is applied to the mold surface allows the plastic to pack out against the steel much better. Use of rapid mold heating and cooling can yield very high-gloss surfaces when molded on a polished surface. If the mold has a micro texture the replicated surface can be very low in gloss.

There are times when high mold temperatures lead to a rippled surface that will show variation in gloss. The heat of the mold creates an effect where the wall is collapsing away from the mold surface that is sometimes referred to as “heat sink”. Reducing the mold temperature or adding second-stage pressure will often resolve this defect.

33.3.1.6 Molding Process: Melt Temperature

When molding with a low melt temperature the pressure drop across the mold will be increased. With the increase in pressure drop many times a variation in gloss will occur. If the mold is not pressurized at a uniform level there is likely going to be variation in gloss levels.

Verify that the melt temperature matches the documented process. If the melt temperature is wrong then evaluate the following:

- Barrel temperatures set point versus actual
- Back pressure
- Screw recovery rate

33.3.2 Gloss Variation Troubleshooting Mold Issues

One of the biggest impacts on gloss levels of a molded part is the mold itself. The main factors that impact the gloss level are:

- Mold surface finish/texture
- Cooling
- Venting
- Inconsistent wall stock

33.3.2.1 Mold: Surface Finish/Texture

One of the biggest contributors to the gloss of a molded part is the mold surface finish. A sand-blasted mold surface will not produce a high-gloss piano black gloss level no matter what is done to the process.

There is a wide range of finishes that can be used for an injection mold. They include:

- Polish
- Texture
- Sand/glass blast

All three of the above options also have many different levels that can impact the part appearance. For example, a polished surface can be polished to a variety of gloss finishes.

If nonuniform gloss is a problem on a part, the surface of the mold should be inspected for areas of variation on the surface. To effectively do this a strong light is often needed to avoid shadows on the surface. Many times upon inspecting the mold surface, areas of worn texture or buildup will be visible. Sometimes a thorough cleaning of the mold surface will eliminate the variation and other times the mold will need to be sand blasted. Inspecting the mold surface can eliminate a lot of troubleshooting time because if the gloss problem is on the mold surface, processing will not resolve it. Buildup can also be an issue on polished surfaces (see Figure 33.3).

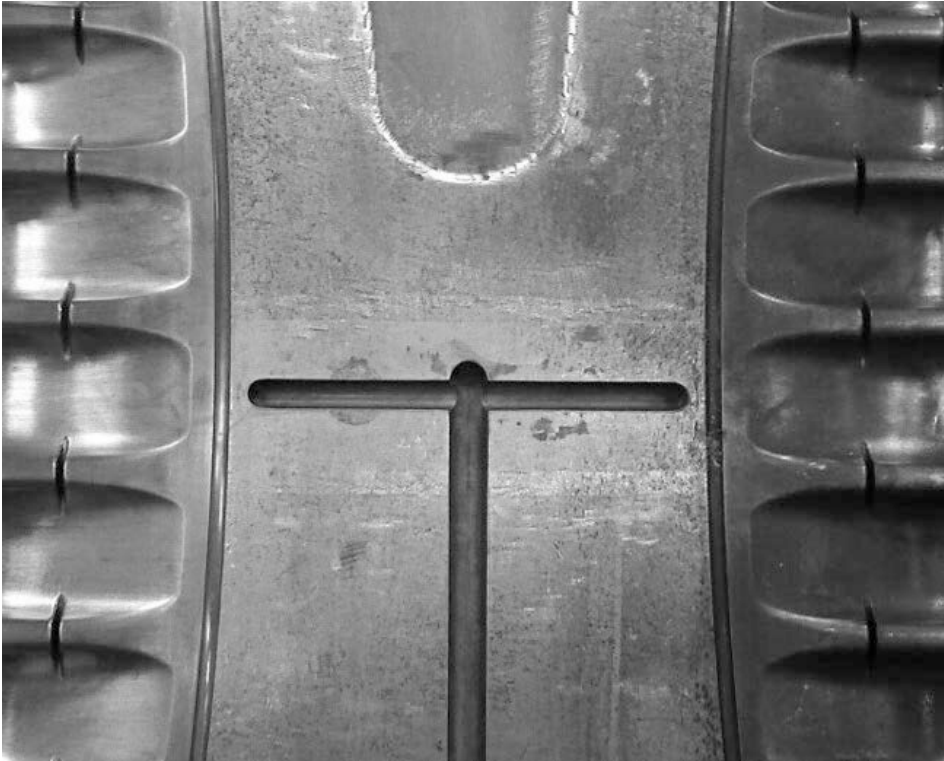


Figure 33.3 Mold surface buildup (right) versus clean surface (left)



Case Study: Polish Buildup

In this case the material being molded was a wood-filled polypropylene. The mold had a polish level of approximately SPI A3, which produced nice glossy black parts when molded with straight polypropylene. An extended run was conducted for a special order of wood-filled polypropylene parts that molded well; however, when the material was changed over to the black polypropylene the gloss level of the parts was dull and inconsistent. Examination of the mold surface showed there was a large amount of buildup on the mold surface and the steel had even tarnished from the gases from the wood-filled material. After many hours of scrubbing with polishing paste, the mold was finally ready for running at high gloss.

Often when a mold texture is used there will either be a secondary micro texture or a sand-blasted finish that creates additional small details that the plastic must be packed into. Under magnification these peaks and valleys will be easy to see and examine for detail. In Figure 33.4 texture details can be viewed under 200× magnification: notice the peaks and valleys that the material must replicate.

Index

Symbols

4M 4
4M Basic 8 7, 301, 383
4M method 18, 32
4M troubleshooting 148, 466
5 Why 5, 13

A

abrasive 441
ABS 37, 81, 144, 149, 179, 217, 219, 237, 328, 415, 436, 479
acetal 155, 171, 189, 221, 235, 247, 272, 395
acid flush 130, 404
acrylic 328
actuated vent pins 59
additive feeder bins 211
additives 81, 190, 296, 328, 416
agglomerates 220
airflow 85
air poppets 341, 425
alarms 383
alloys 280
aluminum oxide 48, 49
amorphous 251, 252, 266, 344, 468
analog input 123
anisotropic 468, 470
anisotropic shrink 253
anti-seize 160, 216
ASA 328
aspect ratio 480

B

backfill 58, 381
backfilled 301, 302

back pressure 76, 156, 167, 175, 183, 201, 203, 229, 266, 311, 324, 383, 403, 415, 417, 419, 454, 474
baffle 404, 405
ball-style non-return valve 250
barrel 135
barrel heaters 137
barrel shot capacity 258
barrel temperatures 153, 167, 183, 188, 266, 311, 403, 454, 474
bead blasted 442
bearing surface 55, 97, 447
Beaumont Effect 104
Beaumont Inc. 104
Beaumont, John 104
bimetallic carbide barrels 391
black/brown streaking 91, 209
black or brown specks 131
black specks 91, 186, 209
blades 259
blast media 47
blend 303, 326
blisters 165, 236, 451
blowing agent 412, 427, 429
blush 141
bore 42
bosses 340, 347
Bozzelli, John 29, 61, 85
brainstorming 15
brass tools 340
breakaway distance 262
breakaway speeds 339
breaking 223
brittle 225
brown streaking 137, 151, 181, 186
bubblers 128, 259, 366, 405
bubbles 81, 165, 296, 451
buildup 130, 173, 186, 194, 324, 341, 350, 387

burning 120, 311, 402
 burns 53, 101, 181, 258
 burrs 228, 340, 350
 byproducts 186

C

CAD model 303
 CAE 269
 CAE flow analysis 463
 CAE software 459
 calibration 75, 273
 capacity issues 255
 caprolactam 179
 carbon 220
 carbon buildup 131, 135
 Carl Fischer titration 86, 416
 cashew gate 34, 108, 148, 235, 277, 279, 359, 408
 cavity 242, 340
 cavity balance 30, 31, 101, 116, 360, 385, 395, 407
 cavity cooling 103
 cavity fill balance 107
 cavity fill rates 103
 cavity fill time 115
 cavity imbalance 33, 466
 cavity instrumentation 111
 cavity locking angles 214
 cavity pressure 59, 103, 243, 258, 267, 282, 290, 292, 338, 453, 462, 473
 cavity pressure curve 361, 408
 cavity pressure transducers 111, 241, 321, 347, 399
 cell packed 373
 cellulosic 81
 change log 17
 changeover 189, 193, 196, 210
 changeovers 200
 charred 183, 190
 check valves 64
 chicken scratches 299
 chiller 403
 chute 226, 372
 clamp force 106, 282, 285
 clamp open 263
 clamp parallelism 293
 clamp pressure 282
 clamp tonnage 285
 clamp velocities 262
 cleaning 324
 cleanout 231
 cloudiness 91, 191
 cold slugs 277, 436
 cold slug well 147, 269, 423
 cold starts 213, 389
 colorant 179, 307, 442
 colorant concentrate 161
 color changes 96, 194
 color concentrate 163, 190, 201, 204, 231, 237, 238
 color mixing 203, 271, 419
 color streaking 91, 199
 color swirls 181, 199, 209
 component deflection 247
 compression ratio 161, 171, 187, 426
 computer-aided flow analysis 98
 computer flow analysis 304, 477
 computer flow simulation 456
 condensation 420
 containers 196
 contaminants 138, 162, 185
 contamination 91, 157, 172, 191, 196, 202, 206, 222, 231, 233, 237, 391, 395, 427
 conveyor 226, 263, 371, 372
 cooling 103, 106, 125, 246, 256, 257, 326, 351, 366, 454, 455, 460, 466
 cooling capacity 403
 cooling circuits 404
 cooling rate 115, 326, 458, 459
 cooling time 242, 244, 256, 258, 260, 261, 348, 358, 434, 464
 cooling tower 403
 copper alloys 366, 438
 copper-based alloys 128, 405
 core 226, 259, 294
 core circuit 294
 cored out 367
 core half 226
 core pin 261, 406, 476
 core pressure 290
 core pull cylinders 290
 core pulls 44
 cores 128, 340
 coring 455
 cost 255
 cover half 225
 cover side detail 338
 crack 169, 170, 194, 424
 cracking 223
 crazing 227
 crystallinity 246

cushion 64, 157, 245, 249, 383, 401
 cushion monitoring 383, 388
 cycle time 125, 201, 226, 244, 246, 255, 295,
 419, 421, 439
 cylinder bore gauge 392
 cylinders 41
 cylinder size 290

D

damage 215, 340, 350
 decompression 168, 184, 245, 415, 418, 445
 Decoupled II® 32
 Decoupled III® processing 122
 Decoupled® II molding process 258
 Decoupled®/scientific molding 29, 30, 243
 deep draw 261
 deep rib 340
 deflection 282, 364
 deformation 358
 degating 277
 degradation 151, 167, 225, 338, 417, 426
 degrade 183, 190, 212, 229, 441
 degraded 91, 131, 201, 387
 delamination 91, 209, 231, 233, 414
 depression 397
 desiccant 82–84, 416
 desiccant beds 84
 design 145, 227, 297, 303, 307, 313, 349, 351,
 367, 398, 406, 452, 455, 458, 472, 477
 Design of Experiments 16
 dew point 82, 83, 416, 442
 dew point meter 83
 dew point monitors 23
 D-gate 35
 dial indicator 285
 diamond 194
 diamond chrome 177
 diamond polish 51
 die blue 366
 die height 285
 die locks 214
 dieseling 181
 differential cavity pressures 364
 differential cooling 247
 differential shrink 261, 364, 366, 458
 dimensional issues 72, 101, 247
 dimensions 239, 242, 283
 dings 369
 direct gating 95
 discoloration 151

dispersion tip 272
 distort 338
 distortion 347, 357, 457
 donuts 374
 downtime 186, 343
 draft 44, 261, 340, 359, 373
 draft analysis 340
 draft angles 228, 340, 349, 352
 drag 359, 373
 drags 228
 draw polish 51, 341, 349, 359, 374, 435, 436
 drool 168, 184, 418, 445, 450
 drooling 97
 drop 212
 dryer monitoring 123
 drying 81, 415
 drying hopper 210
 dull 141, 309, 319
 durometer 342
 duty cycle 273
 dynamic check valve study 64

E

eDART® 400, 409
 EDM 228, 349, 387, 408
 ejected 258
 ejection 225, 226, 261, 279, 464
 ejection force 359
 ejection speed 348
 ejection stroke 261, 350, 372
 ejection surface area 349, 359
 ejection temperature 455, 464
 ejector area 374
 ejector box 289
 ejector pins 112, 230, 279, 365
 ejector plate 263, 289, 351, 360, 365
 ejector plate stop buttons 365
 ejector side 342, 356
 ejector speed 357
 end cap 135, 187, 215, 236
 end of arm tooling 217, 370
 end of fill 183, 302, 310
 end of fill cavity pressure 271
 end-of-fill transducer 114
 environment 253
 environmental stress cracking 227, 459
 erosion 185, 288, 290, 350, 440, 441

F

family molds 109, 292
 feed lines 211, 237, 264
 feed throat 170, 215, 264, 404, 415, 420, 426
 fiber orientation 478
 filled material 251, 252
 fillers 81, 307, 362, 469, 478
 fill only 63, 143, 310
 fill only shot 29, 243, 250, 284
 fill only weight 30, 72, 267, 301, 322, 379, 400, 410
 fill pressure 246
 fill time 258, 267, 306, 310, 381, 402
 fill velocity 142, 183, 242, 258, 265, 266, 300, 310, 322, 333, 473
 filters 85
 fines 139
 first stage 243
 first-stage fill 284
 first-stage injection velocity 381
 first-stage velocity 402
 fishbone diagram 4, 14
 flaking 277, 424
 flame-retardant 328
 flame retardants 179
 flash 54, 72, 101, 258, 279, 281, 297
 flow 259
 flow analysis 303
 flow analysis software 246, 321
 flow defects 307
 flow distance 246
 flow front 302, 303, 333, 475, 478
 flow front velocity 312
 flow leader 303
 flow length 103, 253, 268, 292, 302, 313, 380, 467
 flow lines 141, 299, 414
 flow marks 141
 flow meter 27, 123, 402
 flow pattern 303
 flow rates 327, 454
 foreign material 220, 249, 269, 386
 fountain flow 34, 473
 fracture 223
 freeze 245
 frozen layer 384, 467
 frozen layer plot 246, 456
 full taper tip 270

G

galling 214
 gallons per minute 402
 gas assist 293, 425
 gas assist control 122
 gas assist injection molding 411
 gas booster 411
 gas counter pressure 429
 gas traps 165, 181, 184, 451
 gate 141, 152, 260, 267, 303, 313, 477
 gate design 108
 gate flaking 420
 gate freeze 268
 gate land 34, 268
 gate land length 146, 334
 gate location 268, 334
 gates 253, 279, 386, 395, 406, 467
 gate seal 30, 33, 38, 114, 146, 147, 227, 241, 256, 322, 399, 400, 463
 gate seal study 29, 322, 453
 gate seal time 433, 455
 gate size 142, 245, 334, 407
 gate spacing 246
 gate style 380
 gate thickness 145
 gate vestige 34
 gating 33, 257, 313
 gating thin to thick 458
 gaylord 218
 gaylord tipper 394
 gel tape analysis 220
 general-purpose screw 202, 203
 gibs 214
 glass 252
 glass bead 48
 glass content 316
 glass fibers 309, 310
 glass-filled 33, 34, 39, 50, 59, 128, 249, 259, 307, 309, 311, 328, 391, 436, 440–442
 glass-filled materials 168
 glass transition temperature 348
 glassy 309, 310
 glassy surface 315
 gloss 47, 53, 101, 142, 319, 363
 gloss variation 72, 309, 328
 glossy 319, 355
 grained 320
 grease 157, 185, 214
 grinder 139
 grinding 163

gripper fingers 352
 grippers 352, 371
 Groleau, Rod 29, 61, 111
 guided ejection 374
 gusset ribs 439

H

halo 141
 handling 227, 369
 hang up 96, 135, 152, 189, 194, 195, 204, 210,
 215, 226, 235, 236
 hang up areas 160, 212, 215
 heat deflection temperature 459
 heater 95, 99
 heater band 159, 184, 448
 heater band burnout 159
 heat exchanger 404
 heat sink 323
 heel block 290
 hesitation 299, 302, 476
 hesitation lines 300
 high fill pressure 265
 high-gate 35
 high-gloss 328
 high melt temperature 132, 225
 high pressure 268
 high temperature 174
 hob 290
 hold volume 399, 409, 410
 hopper 222, 237, 394
 hopper loader 210
 horn pins 44, 290
 hot drops 34, 40, 387, 446
 hot drop tips 96, 423
 hot oil 312
 hot runner 93, 95, 146, 169, 189, 194, 212,
 226, 235, 246, 261, 268, 303, 383, 422,
 446
 hot runner cables 388
 hot runner controller 120, 247
 hot runner leakage 98
 hot runner manifold 120, 289, 401, 422
 hot runner plugs 154, 388
 hot runner system 153, 202
 hot runner temperatures 134, 313, 388, 405,
 420
 hot runner tip 146
 hot sprue 438
 hot tip 91, 386, 443, 448
 hydraulic 186

hydraulic cylinders 236, 350
 hydraulic gauge 294
 hydraulic leaks 293
 hydraulic pressure 294
 hydraulic pressure gauge 76
 hydraulic response 74
 hydraulics 41
 hydraulic system 306
 hydrolysis 90, 230, 274, 296, 315, 441
 hygroscopic 89, 171, 189, 197, 416, 441, 480

I

imbalance 101
 impact modifiers 81, 232
 impinge 334
 infrared (IR) 77
 injection compression 60
 injection fill velocity 175
 inserts 128, 405
 insulator 445, 448, 449, 455
 insulator caps 96
 insulator gaps 97, 158
 intensification ratio 167, 203, 338, 382,
 475
 IR temperature gun 201
 IR thermal imaging 137
 is/is not 17
 ISO pipes 128

J

jetting 34, 141, 192, 331

K

Kistler Group 112
 knit lines 184, 312, 471
 knock-out bars 263, 351, 360

L

L*a*b* 207
 label 206, 222, 237
 labeling 196
 laminar flow 104, 126
 land length 145
 larger tonnage machine 283
 laser welding 288
 L/D 187
 L/D ratio 426

leader pin 372
 leakage 250
 leaking 236, 245, 383
 leaking hot runner manifolds 389
 letdown ratio 204, 412, 307
 lifter 185, 229, 247, 277, 279, 348, 350, 374
 lifter pocket 366
 lifter read 363
 lifter rods 365
 linear thermal expansion 253
 line of draw 290, 340
 loaders 211, 420
 loading of pack 373
 load sensitivity 63
 lock angle 41
 locking angle 290
 lockout/tagout 21
 lockup 288, 295
 long flow lengths 257
 long glass fibers 311
 long glass-filled 394
 loop 299
 loss on weight 86, 416
 low back pressure 168
 low-gloss 328
 low-vestige-style hot tip 268
 low vestige tip 96, 386
 lubricant 214, 236
 lubricants 179, 264, 353, 361, 421, 424

M

machine controllers 75
 machine hopper 211
 machine shutdown 132
 machine testing 61
 machining/cutter marks 358
 machining marks 349
 magnets 220, 272
 maintenance 70
 manifold 212
 marbling 199
 marring 374
 masterbatch 179, 412, 442
 material change 186, 193, 212
 material contamination 131
 material feed 243, 394, 415
 material leaking 401
 mechanical switches 45
 meld lines 300, 303, 312, 471
 melt consistency 269
 MeltFlipper® 104
 melt flow index 232, 296
 melt front 266
 melt index 480
 melt probe 201, 311
 melt stream 167
 melt temperature 123, 144, 167, 174, 183, 192,
 201, 225, 234, 243, 256, 264, 266, 286, 301,
 311, 323, 338, 348, 357, 384, 403, 415, 445,
 454, 462, 473
 metal 269
 metal inserts 220
 metallic flaked 479
 metallic flakes 307
 metal shavings 404
 microcellular foam 429
 microetching 48
 micro texture 323, 325
 milkiness 191
 mineral 252, 328
 mineral deposits 404
 minimum mold size 295
 mismatch 135, 160, 169, 187, 194, 195, 212,
 215, 235, 236, 291
 miter locks 134
 mixing 201
 mixing elements 161
 mixing nozzles 202, 270, 391
 mixing screw 161, 203
 mixing style screws 202
 mixing tips 148, 202
 moisture 81, 86, 171, 178, 189, 197, 415, 450
 moisture analyzer 23, 86, 343, 416
 moisture content 230, 274, 306, 315, 343,
 441
 mold breakaway speeds 227
 mold cleaner 157, 215
 mold cleaning 185, 214
 mold component deflection 364, 365
 mold cooling 244
 mold deflection 25, 285, 289
 mold design 169, 253, 257, 327, 334, 349,
 350, 365, 366
 Moldflow® 321, 333
 mold inserts 157
 mold open speed 339
 mold release 344
 mold steel temperature 128
 mold surface 320
 mold surface finish 324
 mold surface temperatures 302

mold temperature 119, 120, 144, 193, 244,
246, 256, 311, 323, 347, 357, 365, 384, 402,
453, 459, 475
mold temperature control unit 122
molecular weight 90, 232, 274, 296, 307, 343
MuCell® 293
multicavity 101, 292, 341, 385
multimeter 22
multiple ejector strokes 263

N

nippers 371
nitrogen 411
nominal wall 452, 455, 458, 475
nominal wall stock 257, 261, 340, 367, 406,
477
non-return valve 64, 245, 249, 379, 383, 389,
401, 410, 426
nonuniform 201
nonuniform wall stock 257
nozzle 135, 148, 187, 215, 236, 390, 439, 448
nozzle adapter 215
nozzle drool 435
nozzle leak 392
nozzle lengths 271
nozzle orifice 236
nozzle temperature 144, 444
nozzle tip 169, 215, 248, 269, 383, 390, 401,
410, 418, 420, 423, 439, 443, 449
nozzle tip orifice 135, 391
nucleated 197, 412
nucleating agents 252, 264, 469
nucleation 362, 442
nylon 39, 86, 87, 89, 97, 171, 179, 180, 231,
272, 275, 288, 306, 315, 394, 415, 441
nylon 6 312, 317
nylon tip 270

O

oil 185, 214
opaque 197, 456
operator 372
orientation 458, 469, 470, 479
orifice 97, 98
orifice gauge 148
outgassing 53, 190
overflow 59, 312, 411, 479
overflows 122
overheated 201

overheating 78, 96, 187
over-packed 347
over-packing 338

P

pack 283
packaging 372, 469
packed 242
pack rate 115
part design 224, 261, 340, 359, 367, 374, 398
part design issues 257
part detail 359
part ejection temperature 128, 365, 366
parting line 280, 282, 286, 287, 340, 374,
383, 444, 466
parting line bearing surface 425
parting line flash 185
part out temperature 258, 357, 385
path of least resistance 381
Paulson, Don 29
PC/ABS 34, 81, 144, 149, 161, 203, 221, 235,
274, 415, 466
peak injection pressure 379
peak pressure 274
perimeter venting 425
perpendicular 381
piano black 324
pigments 207
pin deflection 349
pin marks 355
pin push 72, 261, 355, 359
pin read 363
pins 277
plastication 175, 177, 264, 274
plasticizers 190
plastic pressure 203
platen 289, 293
platen deflection 106, 289
platen parallelism 106
platen wrap 295
plate out 173, 385
plugged 269, 404
PMMA 171
poka-yoke 237
polish 194, 320, 321, 324
polished 50, 228
polishing 47, 288
polycarbonate 81, 133, 149, 171, 179, 328, 343,
352, 415, 423, 441, 451

polyester 315, 343, 352
 polyesters 81, 171, 230, 415, 441
 polyethylene 155, 237
 polypropylene 38, 90, 132, 146, 155, 193, 197,
 207, 237, 272, 341, 359, 366, 373, 425, 436,
 462, 465, 429
 polystyrene 196
 poppet valve 402
 porous steel 58
 post-gate cavity pressure 400
 post-gate transducer 114
 post-mold handling 464
 post-molding 224
 post-mold shrinkage 243, 244
 PP 35, 204, 205
 PPO 179
 preload 290
 preloaded push pins 342
 pressure 76
 pressure differential 243
 pressure drop 103, 115, 146, 202, 246, 266,
 270, 321, 379, 403, 453, 462
 pressure-drop study 38, 39
 pressure gauge 273
 pressure limited 29, 38, 39, 86, 203, 265,
 266, 306, 310, 379
 pressure limiting 66
 pressure loss 34, 96
 pressure profile 399
 pressure relief valve 43, 294
 pressure response 286
 pressure-sensitive film 440
 preventative maintenance 427
 Priamus System Technologies 112
 process control 122, 426
 process monitoring 23, 71, 117
 process monitoring curves 379
 process monitoring system 76
 process window 225
 profile 235
 profiled first-stage fill velocity 333
 projected area 283, 292
 proximity switches 45
 pullers 358
 pull sink 408
 purge 91, 132, 342
 purging 163, 168, 186, 200
 purging compound 92, 196
 PVC 132, 155, 171, 189, 190, 221, 235, 441
 pyrometer 22, 99, 106, 120, 365, 460

R

radius 224, 228, 406
 rapid mold heating 475
 rapid mold heating and cooling 323
 read-through 261, 320, 326, 363, 365, 366
 record grooves 299, 300
 recording 299
 recovery speeds 156
 regeneration heaters 84
 regrind 95, 138, 163, 177, 196, 219, 231, 264,
 271, 297, 307, 394, 450
 release 339
 release agents 179, 190, 232, 264, 344, 353,
 361, 442
 relief 54
 residence time 132, 155, 187, 189, 207, 225,
 235, 415, 419, 474
 resin remover 342
 restriction 271
 return air 84
 reverse-flow thermolator 169, 424
 Reynolds number 126
 ribs 347, 381
 rib to wall 398
 rib to wall ratio 458
 ring gate 37
 ring vent 421
 rippled surface 323
 RJG Decoupled III® process 394
 RJG Decoupled Molding® 284, 379, 400
 RJG Decoupled® process 382
 RJG eDART® 23, 74, 84, 113, 203, 243, 273,
 286, 410
 RJG Technologies 111, 122
 robot 78, 217, 226, 263, 352, 370, 465, 468
 root cause 1
 rubber gels 220
 rubber modifiers 328
 ruby stone 374
 runner 242, 246, 260, 268, 297, 313
 runner length 380

S

sand-blasted 320, 324, 325, 342
 sand/glass blast 324
 scale buildup 123, 404, 434
 scientific molding 30
 scrapes 279, 369
 scrap recording sheets 14

- scratch 300, 414
- scratch and mar 320
- scratches 369
- screw 135, 161, 171, 187, 201, 426
- screw design 425, 454, 474
- screw L/D 161
- screw recovery 201, 417
- screw recovery rate 324, 454
- screw recovery speed 167, 175, 403, 474
- screw rotate 258
- screw rotate delay 201
- screw rotate speed 266
- screw rotational speed 183
- screw speed 229
- scuffing 340
- scuffs 370
- second-stage pressure 225, 230, 240, 283, 284, 321, 347, 356, 364, 382, 399, 433, 453, 474
- second-stage time 241, 322, 399, 453
- second-stage velocity 305
- second-stage volume 284, 305
- self-locking cylinder 43
- semi-crystalline 97, 197, 244, 251, 252, 264, 269, 344, 347, 395, 403, 412, 426, 442, 463, 468
- sequentially valve gated 303
- sequential valve gates 95, 477
- sharp corners 224, 228
- shear 146, 156, 175, 184, 229, 235, 417, 419, 427
- shear imbalance 104
- shear rates 38, 103, 270, 385
- shear viscosity study 300
- short shot analysis 300
- short shots 53, 72, 101, 119, 166, 192, 272, 377, 383
- shot size 245, 250, 258, 379, 419
- shrink 226, 239, 246, 347, 399, 403, 406, 453, 455
- shrinkage 283, 458, 463
- shrink factor 252, 253, 283
- shrinking 338, 339
- shrink on 261
- shrink rates 261, 412
- shutdown 187
- shut off 282, 287, 289
- shut-off 44
- shutoff 214
- shutoff surfaces 134
- silos 206, 222, 237
- silver streaks 413
- sink 72, 101, 261, 283, 402, 403, 412, 452, 454
- sink index 467
- sintered metal 476
- sizing agents 316
- sleeves 359
- slide 185, 350, 374
- slides 44, 229, 277, 279, 290
- sliding ring 250
- snapping 223
- solenoid 406
- solvents 227
- splay 53, 90, 91, 98, 120, 137, 186, 197, 209, 231, 413, 421, 423, 445
- spotted 366
- spotting blue 22
- spotty 319
- spreader tip 97, 194, 269
- sprue 147, 242, 246, 260, 268, 431
- sprue break 434
- sprue bushing 169, 215, 236, 383, 401, 434
- sprue bushing seat 158
- sprue opening 270
- sprue picker 372
- sprue puller 434, 436
- sprue sticking 423
- stalling 299, 303
- startup 384
- startup parts 302
- steel temperature 327, 339
- steel tools 288
- stick 225
- sticking 47, 72, 101, 185, 337, 342, 345, 347, 356, 358, 453, 465
- sticking on cover 337
- sticking on ejector 346
- STOP 4, 18, 225, 252, 261, 280, 282
- STOP analysis 288
- STOP method 147, 370, 378, 466
- STOP methodology 217, 303, 383
- STOP process 146, 339, 348, 373
- STOP troubleshooting 227, 231, 243, 246, 364
- straight lifters 349
- straight through sprue style 96
- stratification 233
- streakiness 191
- streaking 199, 231
- streaks 209
- stress 227, 458, 459

stress concentrations 228
stress risers 224
string 450
stringers 288, 443
stringing 168, 184, 262
stuck plastic 387
styrene-butadiene copolymer 196
styrenic 204
sub gate 35, 36, 108, 235, 277, 279, 408
sub gated 359
suicide/crash condition 44
support pillars 289
surface area 42
surface finish 229
switches 45
systematic 3

T

talc 328, 462
TCU 128
Teflon thread tape 404
temperature 76
temperature control 425
template 382, 453
texture 47, 321, 324, 328, 342, 358, 373
texture depth 340, 374
thermal control 229
thermal image 259, 327, 403
thermal imaging 434, 461
thermal imaging camera 25, 106, 258
thermally stable 190
thermocouple 83, 95, 99, 147, 167, 184, 388, 422
thermocouples 76, 78, 111, 118, 156, 159, 229, 446, 448
thermolator 106, 257, 311, 365, 454, 459, 461
thermoplastic elastomers 50
thermoplastic polyurethane 50
thick wall sections 398
thin sections 302
thin wall 293, 303
thin wall sections 257
throughput 237
tie bar 293, 294
timing out 379
TiO₂ 221
tip radius 440
toggle links 295
toggle machine 285

toggle wear 295
tonnage 292, 477
tonnage per square inch 292
TPE 341, 441
TPO 144, 149, 221, 328
TPU 90, 341-343, 352, 415, 417, 441, 442
tracer pellets 155
training 342
transfer 243, 322, 463
transfer position 250, 284, 322, 379
transfer pressure 301, 411
transferring 267, 305
transparent 171, 191, 456
trapped plastic 288
travel 229, 350
trimming 373
T-slot coupler 42, 44
tuning 70, 74
turbulent flow 126, 259, 351, 403
turbulent water flow 460

U

unbalanced flow 303
uncovered containers 237
undercut 228, 280, 339, 342, 435
uniformity 168
uniform melt 201
uniform nominal wall stock 240, 303
unmelted 250
unmelted pellets 269
unmelts 172, 272, 395
unmelt test 395
unsupported length 365
UV stabilizers 179

V

vacuum 166, 177, 263, 339, 341, 451
vacuum cups 217, 371
vacuum venting 58
valve gate 95, 96, 119, 247, 405, 447, 448
valve gate control 122
valve gating 477
valve pin 194, 405
valve pin actuation 303
valve tuning 410
vapor locks 402
velocity 65
velocity linearity 66, 314
velocity to pressure response 409

velocity to pressure transfer 72, 249, 286,
305, 382, 408, 478
velocity to pressure transition 361
vent 53
vent depth 54, 288
venting 106, 168, 175, 182, 184, 258, 288, 301,
311, 312, 327, 381, 385, 420, 421, 473, 475
venting ejector pins 56
vent inserts 58
vent land 176
vents 173
Venturi effect 169, 421, 425
viscosity 30, 183, 266, 274, 296, 307, 316,
393, 411, 450, 480
voids 101, 165, 397, 433, 451
volatiles 172, 173, 189, 450
volume 40, 72
volumetric additive feeders 204
volumetric feeder 211
volumetric flow rate 242, 272, 313, 379

W

wall stock 143, 197, 246, 253, 269, 302, 326,
476
wall stock transition 326
wall thickness 246, 292, 463
Ward, Norm 61
warp 101, 244, 247, 257, 258, 457
water circuit 454

water diagrams 106, 327
water flow 123, 127, 402, 404, 434
water flow rate 461
water leaks 100, 194
water line 169
water line layout 127
water temperature 127, 434, 461
water treatment 404
wear 213, 249, 258, 401
wear plates 134, 214
weld line 53, 59, 471
weld line plot 472
wet 427
white imprints 355
white streaks 191
witness line 305
wood-filled 328
worm tracks 331
worn barrel 391

X

X-ray inspection 456

Z

Zapox 194, 342
zero draft 340
zinc stearate 344, 362